

U.S. PUBLIC LAND SURVEY MONUMENT RECORD

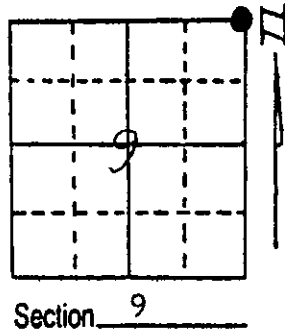
Note: This form is intended and designed to fulfill all requirements of Wisconsin Administrative Code, Chapter A-E 5.02, U.S. Public Land Survey Monument Record (3) (a) (b) (c) (d) (e) (f) (g) (h) (i). An additional sheet may be added if necessary to conform with said requirements.

(a) Corner location: Township 39 North

Range 6 East/West

Town/City/Village Minocqua

County Oneida

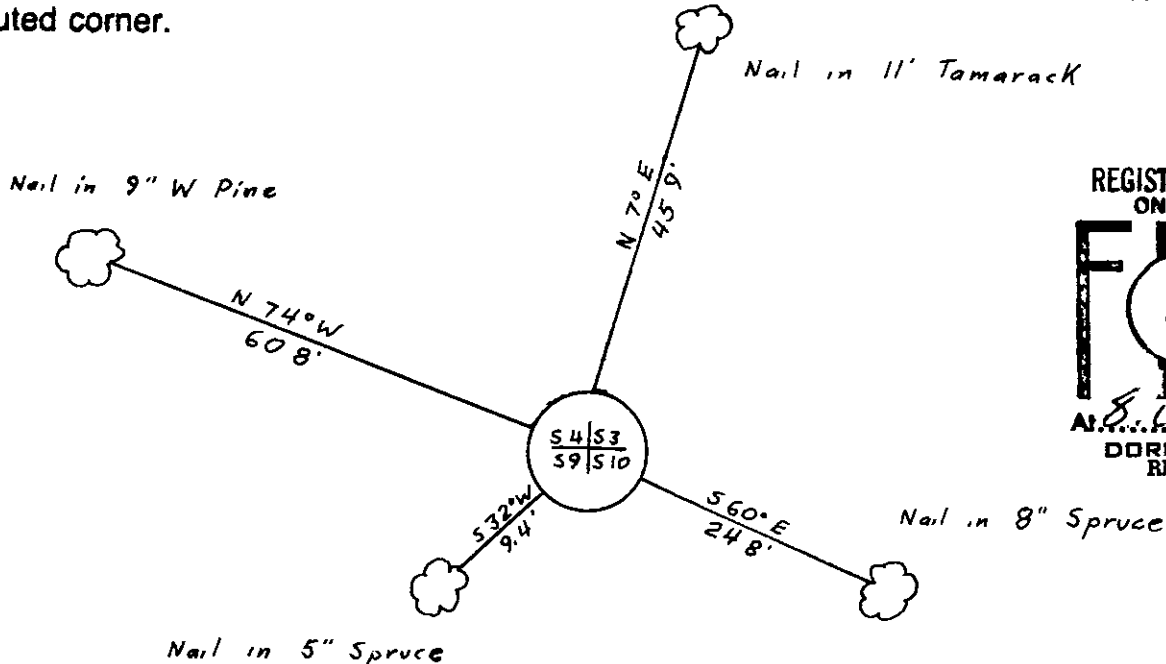


(b) (f) (g) (h) Description of monument found at this corner and if it was accepted, state all evidence (material, testimonial, occupational, plats, records, other monuments) used as a basis for accepting. If not accepted or if nothing was found, state evidence used as basis for establishing location. If reestablished through lost corner proportionate methods, indicate all monuments, distances and directions used to establish.

Found old wood post with pointed tip and steel post laying over. Also found old fence going east.

This corner closely fits distances called for in 1949 survey by E.F. Kowalke. Replaced wood post with 3" diameter aluminum tablet stamped to identify corner on 2" diameter aluminum pipe 2.5 feet long.

(c) (d) (e) Plan view of corner with ties to at least 4 witness monuments. If in disagreement with previously established corner, show the distances between the two corners and also indicate the ties to the disputed corner.



REGISTER OF DEEDS OFFICE
ONEIDA COUNTY, WIS.

FILED

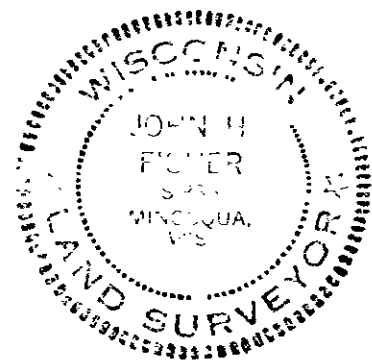
AUG 14 1986

At 8:00 O'Clock
DORIS VERAGE KUEHN
REGISTER OF DEEDS

(i) I, John E. Fisher S-836

(type or print name) certify that the corner location on this record was determined by me or under my direction and control and that this U.S. Public Land Survey Monument Record is correct and complete to the best of my knowledge and belief

John E. Fisher 8/7/86
Signature Date



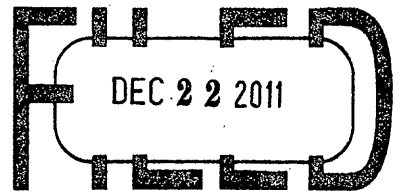
Index No. E. 18

3906040000

U.S. PUBLIC LAND SURVEY MONUMENT RECORD

Note: This form is intended and designed to fulfill all requirements of the Wisconsin Administrative Code, Chapter A-E 7.08 U.S. Public Land Monument Record (3)(a)(b)(c)(d)(e)(f)(g)(h)(i). An additional sheet may be added if necessary to conform with said requirements.

REGISTER OF DEEDS OFFICE
ONEIDA COUNTY, WIS.



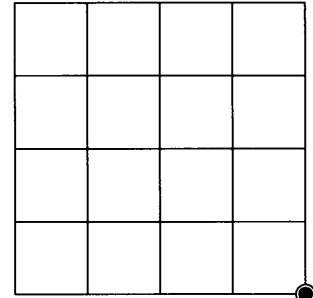
At _____ O'Clock _____ M
THOMAS H. LEIGHTON
REGISTER OF DEEDS

(a) CORNER LOCATION:
Southeast corner of Section 4
Township 39 North
Range 6 East
Towns of Minocqua / Woodruff line
County of Oneida

COORDINATES
North: 246544.083
East: 175858.610
Control Station: Oneida County #268S
Latitude: 45°52'56.50672"
Longitude: 89°46'20.15317"
Datum: NAD-83, '91
Method: Direct RTK-GPS

(RECORDING AREA)

SECTION 4



(b) HISTORY OF ORIGINAL CORNER ESTABLISHMENT

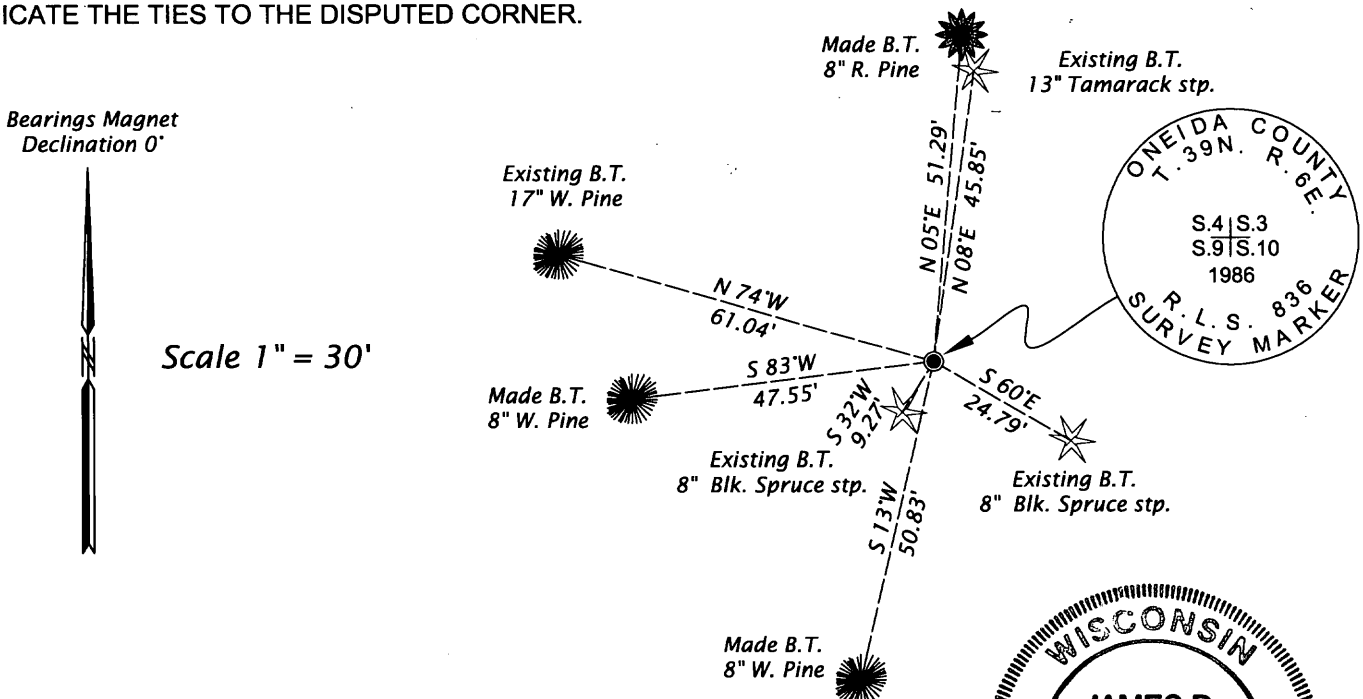
Original Surveyor: Alexander Anderson, Deputy Surveyor
Date of Survey: Commenced October 13, 1863
Completed October 23, 1863
Original B.T.'s: Tamarack 6" N39°E, 44 links
Y. Pine 15" N24°W, 137 links

(f)(g)(h) DESCRIPTION OF MONUMENT FOUND AT THIS CORNER AND IF IT WAS ACCEPTED, STATE ALL EVIDENCE (MATERIAL, TESTIMONIAL, OCCUPATIONAL, PLATS, RECORDS, OTHER MONUMENTS) USED AS A BASIS FOR ESTABLISHING LOCATION. IF NOT ACCEPTED OF IF NOTHING WAS FOUND, STATE EVIDENCE USED AS BASIS FOR ESTABLISHING LOCATION. IF REESTABLISHED THROUGH LOST CORNER PROPORTIONATE METHODS, INDICATE ALL MONUMENTS, DISTANCES AND DIRECTIONS USED TO ESTABLISH. INDICATE TYPE OF MONUMENT AND SIGN POST FOUND OR SET.

August 7, 1986 - John H. Fisher, RLS No. 836 - U. S. Public Land Survey Monument Record filed August 14, 1986 in the Oneida County Register of Deeds Office.

April 7, 2011 - James D. Rein, RLS No. 1234 - I recover an Oneida County capped 2.4" o.d. aluminum monument extending 9 inches above ground with cap stamped as shown below in plan view and as described in the above noted monument record. An old 4 inch square Cedar post sets 1.2 feet southwest of corner monument. Because three of four bearing trees, referenced in surveyor Fisher's monument record, are now stumps, I make new bearing trees as shown below and place a white poly stake 1.2 feet south of the corner monument. Measurements to bearing trees were made to aluminum nails set in the center of the root crown on the side of the tree.

(c)(d)(e) PLAN VIEW OF CORNER WITH TIES TO AT LEAST 4 WITNESS MONUMENTS. IF IN DISAGREEMENT WITH PREVIOUSLY ESTABLISHED CORNER, SHOW THE DISTANCE BETWEEN THE TWO CORNERS AND ALSO INDICATE THE TIES TO THE DISPUTED CORNER.



(i) I, JAMES D. REIN, PROFESSIONAL LAND SURVEYOR NO. S-1234 HEREBY CERTIFY THAT THE CORNER LOCATION ON THIS RECORD WAS DETERMINED BY ME OR UNDER MY DIRECTION AND CONTROL AND THAT THIS U.S. PUBLIC LAND SURVEY MONUMENT RECORD IS CORRECT AND COMPLETE TO THE BEST OF MY KNOWLEDGE AND BELIEF.

[Handwritten Signature]

12-16-11
DATE



3906040000

INDEX NO. E 13