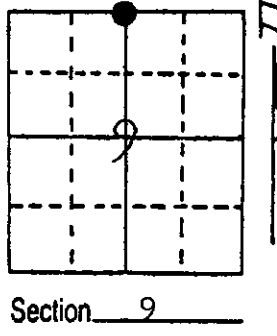


U.S. PUBLIC LAND SURVEY MONUMENT RECORD

Note: This form is intended and designed to fulfill all requirements of Wisconsin Administrative Code, Chapter A-E 5.02, U.S. Public Land Survey Monument Record (3) (a) (b) (c) (d) (e) (f) (g) (h) (i). An additional sheet may be added if necessary to conform with said requirements.

(a) Corner location: Township 39 North
 Range 6 East/West

Town/City/Village Minocqua
 County Oneida



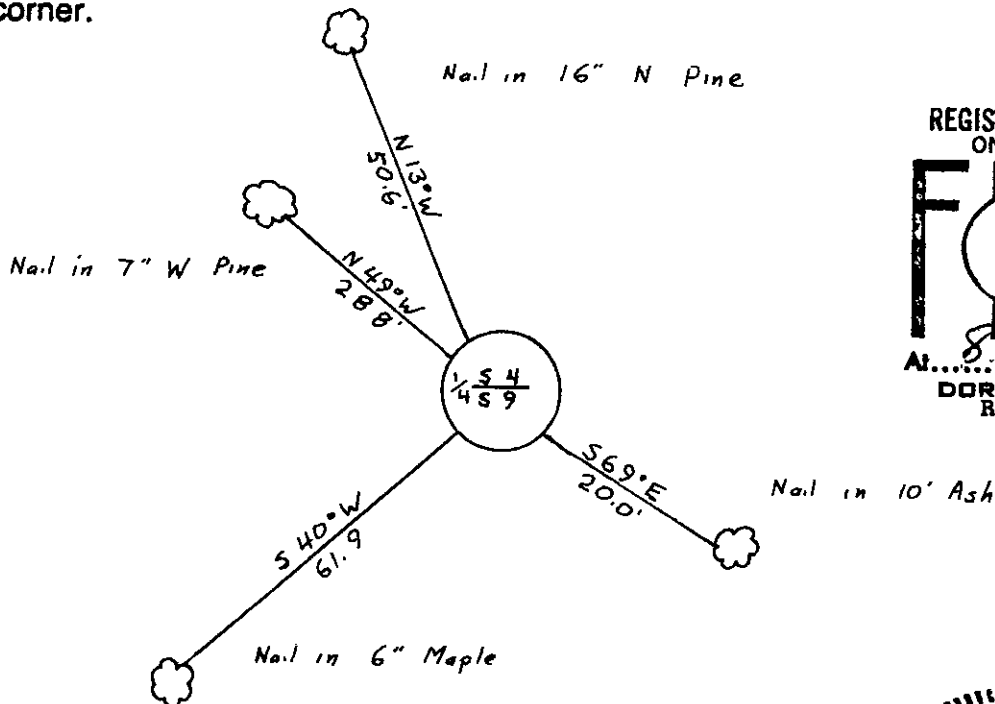
Section 9

(b) (f) (g) (h) Description of monument found at this corner and if it was accepted, state all evidence (material, testimonial, occupational, plats, records, other monuments) used as a basis for accepting. If not accepted or if nothing was found, state evidence used as basis for establishing location. If reestablished through lost corner proportionate methods, indicate all monuments, distances and directions used to establish.

Found 3" x 4" Square Concrete Monument and scribing on White Pine 20" S75°E 56.7 feet
 This corner closely fits distances called for in 1949 survey by E. F. Kowalke.

Replaced concrete monument with 3" diameter aluminum tablet stamped to identify corner on 2" diameter aluminum pipe 2.5 feet long.

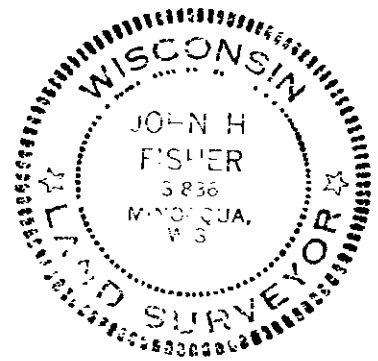
(c) (d) (e) Plan view of corner with ties to at least 4 witness monuments. If in disagreement with previously established corner, show the distances between the two corners and also indicate the ties to the disputed corner.



REGISTER OF DEEDS OFFICE
 ONEIDA COUNTY, WIS.
FILED
 AUG 14 1986
 At 8:00 O'Clock a.m.
 DORIS VERAGE KUEHN
 REGISTER OF DEEDS

(i) I, John E. Fisher S-836
 (type or print name) certify that the corner location on this record was determined by me or under my direction and control and that this U.S. Public Land Survey Monument Record is correct and complete to the best of my knowledge and belief

John E. Fisher 8/7/86
 Signature Date



Index No. E 11

3906040020