

U.S. PUBLIC LAND SURVEY MONUMENT RECORD

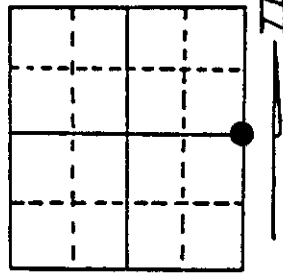
Note: This form is intended and designed to fulfill all requirements of Wisconsin Administrative Code, Chapter A-E 5.02, U.S. Public Land Survey Monument Record (3) (a) (b) (c) (d) (e) (f) (g) (h) (i). An additional sheet may be added if necessary to conform with said requirements.

(a) Corner location: Township 30 North

Range 6 East/West

Town/City/Village Woodruff

County Oneida



Section 4

(b) (f) (g) (h) Description of monument found at this corner and if it was accepted, state all evidence (material, testimonial, occupational, plats, records, other monuments) used as a basis for accepting. If not accepted or if nothing was found, state evidence used as basis for establishing location. If reestablished through lost corner proportionate methods, indicate all monuments, distances and directions used to establish.

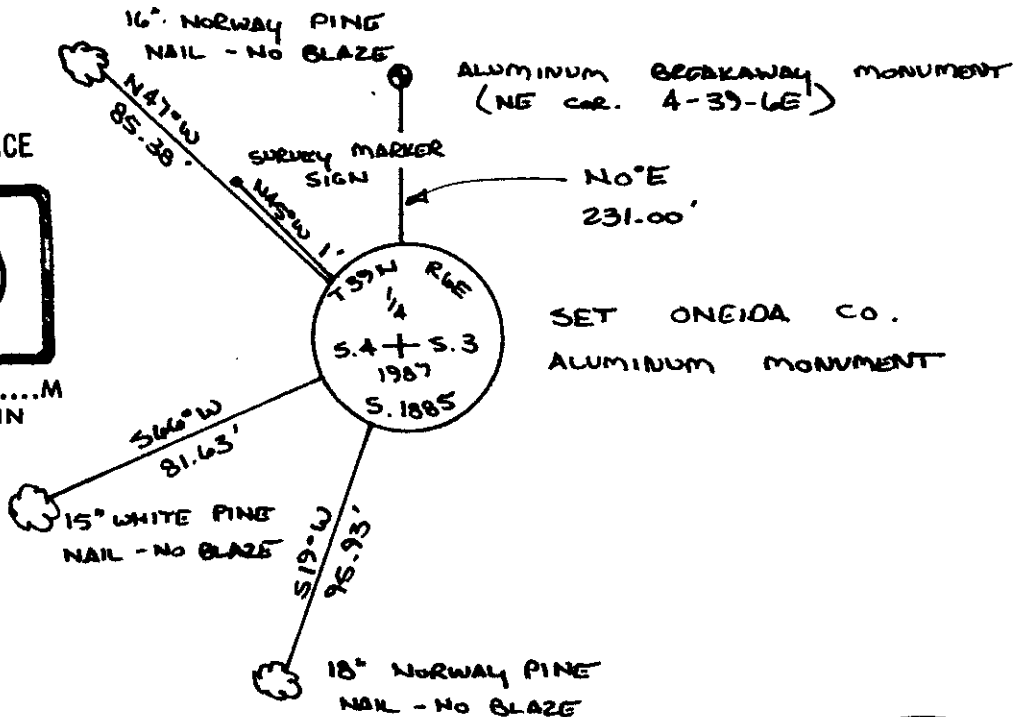
Determined search area from information in original survey field notes. Searched extensively - found nothing. Set monument on line between Section Corner to the North and Section Corner to South - Field distance from Section Corner to North as that found in original notes. (3.5 chains), original survey:

Wood lot set by Alexander Anderson on October 18, 1863.

Yellow line	8'	S55°0'	30 lks.
Senarac	10'	S22°0'	47 lks.

(c) (d) (e) Plan view of corner with ties to at least 4 witness monuments. If in disagreement with previously established corner, show the distances between the two corners and also indicate the ties to the disputed corner.

REGISTER OF DEEDS OFFICE
ONEIDA COUNTY, WIS.
FILED
AUG 21 1987
At O'Clock M
DORIS VERAGE KUEHN
REGISTER OF DEEDS



(i) I, Jeffrey W. Austin
(type or print name) certify that the corner location on this record was determined by me or under my direction and control and that this U.S. Public Land Survey Monument Record is correct and complete to the best of my knowledge and belief.

Jeffrey W. Austin Signature 8-19-87 Date



Index No. C 13

3966042000