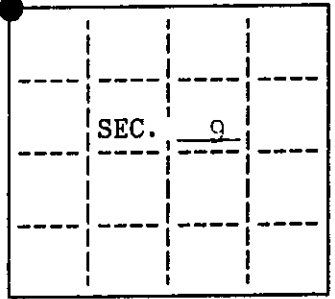


U.S. PUBLIC LAND SURVEY MONUMENT RECORD

Note: This form is intended and designed to fulfill all requirements of Wisconsin Administrative Code, Chapter A-8 7.08 U.S. Public Land Survey Monument Record (3)(a)(b)(c)(d)(e)(f)(g)(h)(i). An additional sheet may be added if necessary to conform with said requirements.

(a) CORNER LOCATION: State Plane Coordinates
 NW corner of Sec. 9 X _____
 Township 39 North Y _____
 Range 6 East Datum Base _____
 Town/City Minocqua County of Oneida



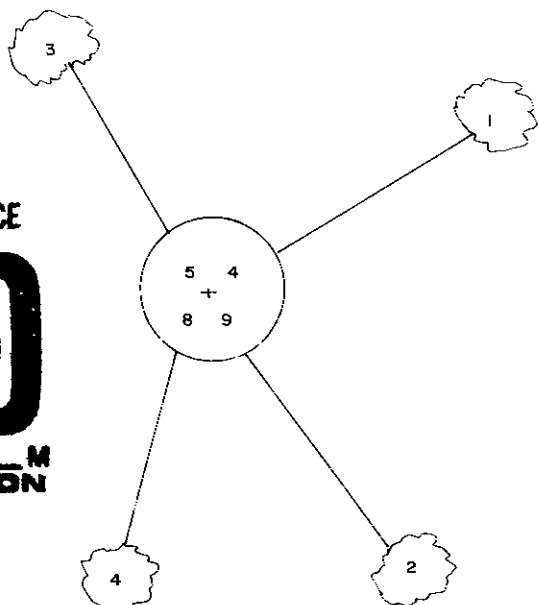
(b) HISTORY OF ORIGINAL CORNER ESTABLISHMENT
 Original Surveyor: Alexander Anderson Original B.T.'S
 Date of Survey: Commenced Cct. 1863 Aspen 12 N55°W, 14 lks.
 Completed Cct. 1863 Aspen 8 S45°E, 16 lks.

(b)(f)(g)(h) Description of monument found at this corner and if it was accepted, state all evidence (material, testimonial, occupational, plats, records, other monuments) used as a basis for accepting. If not accepted or if nothing was found, state evidence used as basis for establishing location. If reestablished through lost corner proportionate methods, indicate all monuments, distances and directions used to establish. Indicate type of monument and sign post found or set.

August 15, 1986 : CSM by John Fisher: IECW brass tablet in 6" dia. concrete. Set nail in FT: N.Pine 18" N31°W, 23.6'; Maple 6" N55°E, 8.23'; Spruce 8" S40°E, 18.3'; N.Pine 7" S9°E, 25.52'.

December 7, 1991: I found and accepted a 6" dia. concrete monument with 3-3/4" dia. IECW brass cap 6" above ground and marked as shown below. I found the following witnesses: nail in Maple 9' N59°E, 8.22 feet (Fisher), nail in W.Spruce 11" S36°E, 18.31 feet (Fisher); nail in R.Pine 18" N30°W, 23.57 feet (Fisher). I established the following witnesses. set nail in unblazed Oak 14" S15°W, 73.90 feet; set plastic sign post Northeast, 2 feet.

(c)(d)(e) Plan view of corner with ties to at least 4 witness monuments. If in disagreement with previously established corner, show the distances between the two corners and also indicate the ties to the disputed.

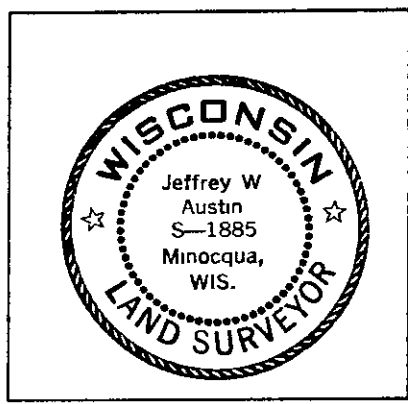


1. nail in Maple 9' N59°E, 8.22 feet
 2. nail in W.Spruce 11" S36°E, 18.31 feet
 3. nail in P.Pine 18" N30°W, 23.57 feet
 4. nail in Oak 14' S15°W, 73.90 feet
- (not to scale)

REGISTER OF DEEDS OFFICE
 ONEIDA COUNTY, WIS.
FILED
 DEC 18 1991
 At _____ O'Clock _____ M
THOMAS H. LEIGHTON
 REGISTER OF DEEDS

(i) I, Jeffrey W. Austin, Reg. Land Surveyor hereby certify that the corner location on this record was determined by me or under my direction and control and that this U.S. Public Land Survey Monument Record is correct and complete to the best of my knowledge and belief.

Signature *Jeffrey W. Austin* Date 12-14-1991



INDEX NO E-9

3906050000

U.S. PUBLIC LAND SURVEY MONUMENT RECORD

REGISTER OF DEEDS OFFICE
ONEIDA COUNTY
FILED

SEP 07 2017

Note: This form is intended and designed to fulfill all requirements of the Wisconsin Administrative Code, Chapter A-E 7.08 U.S. Public Land Monument Record (3)(a)(b)(c)(d)(e)(f)(g)(h)(i). An additional sheet may be added if necessary to conform with said requirements.

AT _____ O'CLOCK _____ M
KYLE J. FRANSON
REGISTER OF DEEDS

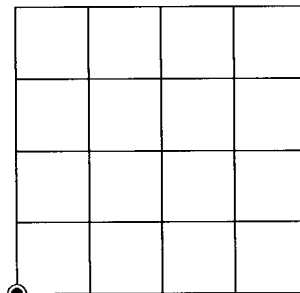
(a) CORNER LOCATION:

Southwest Corner of Section 4
Township 39 North
Range 6 East
Town of Woodruff
County of Oneida

North:
East:
Datum:
GNSS Method:
GNSS Control:

(RECORDING AREA)

SECTION 4



(b) HISTORY OF ORIGINAL CORNER ESTABLISHMENT

Original Surveyor:
Date of Survey: Commenced _____
Completed _____
Original B.T.'S _____

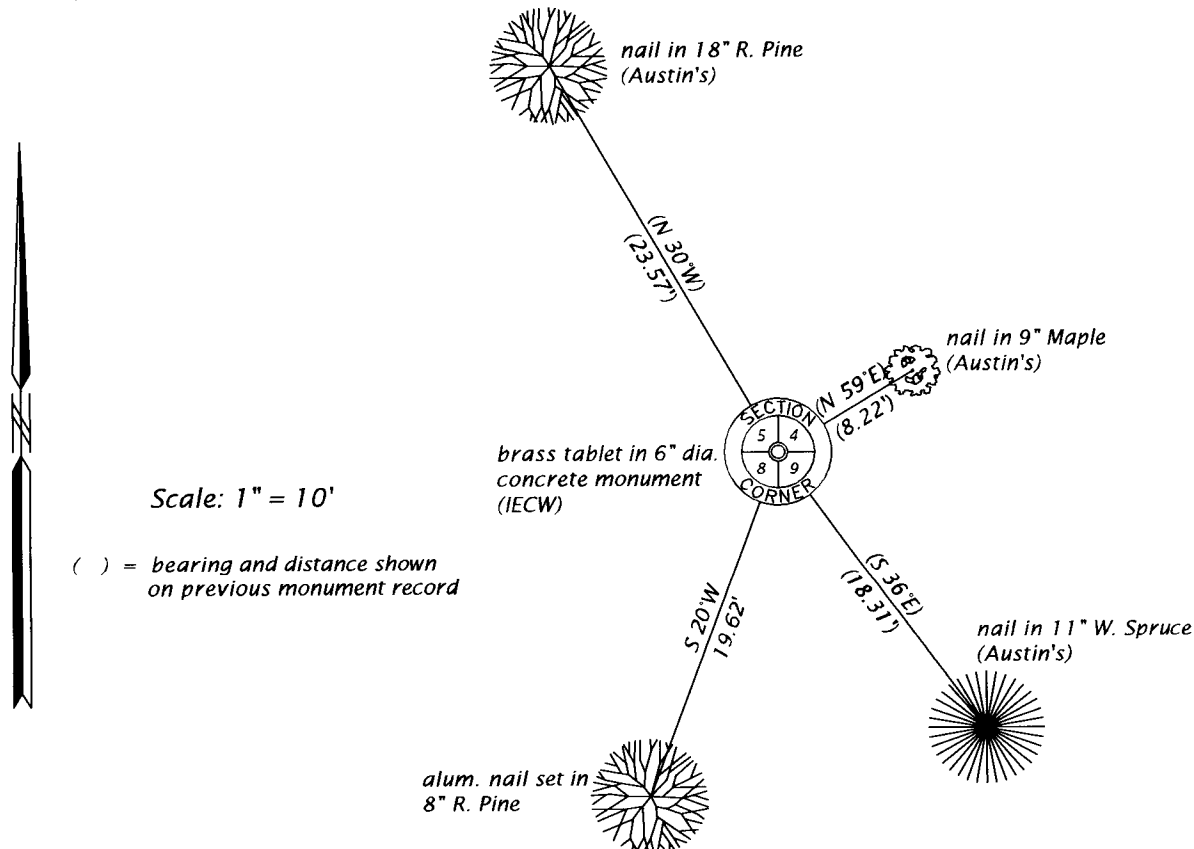
SEE PREVIOUS U.S.P.L.S. MONUMENT RECORD DATED DECEMBER 14, 1991.

(f)(g)(h) DESCRIPTION OF MONUMENT FOUND AT THIS CORNER AND IF IT WAS ACCEPTED, STATE ALL EVIDENCE (MATERIAL, TESTIMONIAL, OCCUPATIONAL, PLATS, RECORD, OTHER MONUMENTS) USED AS A BASIS FOR ESTABLISHING LOCATION. IF NOT ACCEPTED OR IF NOTHING WAS FOUND, STATE EVIDENCE USED AS BASIS FOR ESTABLISHING LOCATION. IF REESTABLISHED THROUGH LOST CORNER PROPORTIONATE METHODS, INDICATE ALL MONUMENTS, DISTANCES AND DIRECTIONS USED TO ESTABLISH. INDICATE TYPE OF MONUMENT AND SIGN POST FOUND OR SET.

This is a perpetuation of a previous U.S.P.L.S. Monument Record by Jeffrey W. Austin, RLS, dated December 14, 1991, and filed in the office of the Oneida County Register of Deeds. A complete history of the corner can be found on the previous monument record. I accept the previous location as a true and faithful perpetuation or reestablishment of the original corner location and further perpetuate it as follows.

August 29, 2017, James D. Rein, PLS No. S-1234, found and accepted the concrete monument with the IECW brass cap used by Austin in 1991. His southwest oak is now gone. See below for updated witnesses.

(c)(d)(e) PLAN VIEW OF CORNER WITH TIES TO AT LEAST 4 WITNESS MONUMENTS. IF IN DISAGREEMENT WITH PREVIOUSLY ESTABLISHED CORNER, SHOW THE DISTANCE BETWEEN THE TWO CORNERS AND ALSO INDICATE THE TIES TO THE DISPUTED CORNER.



(i) I, JAMES D. REIN, PROFESSIONAL LAND SURVEYOR NO. S-1234 HEREBY CERTIFY THAT THE CORNER LOCATION ON THIS RECORD WAS DETERMINED BY ME OR UNDER MY DIRECTION AND CONTROL AND THAT THIS U.S. PUBLIC LAND SURVEY MONUMENT RECORD IS CORRECT AND COMPLETE TO THE BEST OF MY KNOWLEDGE AND BELIEF.

SIGNATURE

DATE

8-31-17



INDEX NO. E-9
3906050000