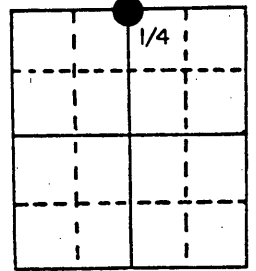


U.S. PUBLIC LAND SURVEY MONUMENT RECORD

Note: This form is intended and designed to fulfill all requirements of Wisconsin Administrative Code, Chapter A-E 5.02, U.S. Public Land Survey Monument Record (3) (a) (b) (c) (d) (e) (f) (g) (h) (i). An additional sheet may be added if necessary to conform with said requirements.

(a) Corner location: Township 39 North
 Range 6 East ~~West~~
 Town/City/Village MINOCQUA
 County ONEIDA



Section 8

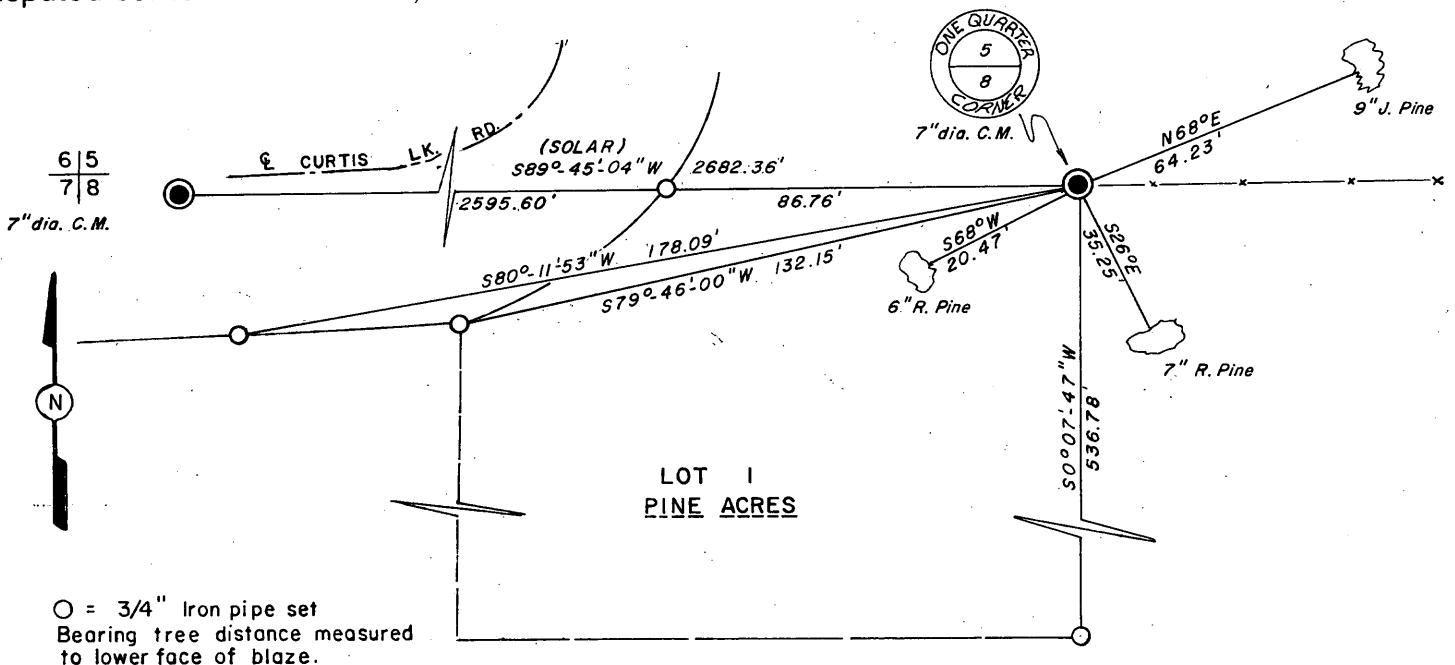
(b) (f) (g) (h) Description of monument found at this corner and if it was accepted, state all evidence (material, testimonial, occupational, plats, records, other monuments) used as a basis for accepting. If not accepted or if nothing was found, state evidence used as basis for establishing location. If reestablished through lost corner proportionate methods, indicate all monuments, distances and directions used to establish.

October 1863 - Alexander Anderson, Deputy Surveyor, set one-quarter section corner post.
 Original bearing trees: Aspen $10''$ N $52-1/2^\circ$ W 40 links;
 Aspen $10''$ S 9° E, 20 links.

October 1975 - Jerome N. Kraemer and James D. Rein find 7" diameter concrete monument with stamped tablet, "INDIAN RESERVATION BOUNDARY-ORIGINAL CORNER LOCATION, I.E.C.W. 1936 1/4 S, 5, 8;" Old barbed wire fence runs south and east of corner. Blazed and scribed new bearing trees:
 6" Red Pine S 68° W, 20.47 feet;
 7" Red Pine S 26° E, 35.25 feet and
 9" Jack Pine N 68° E 64.23 feet.

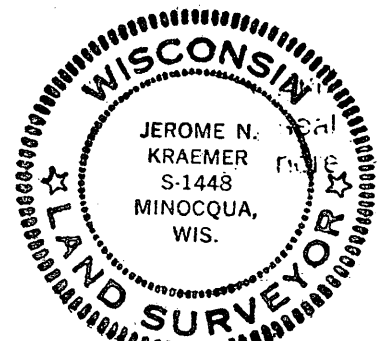
1977 - Iron pipes set by Jerome N. Kraemer for lot corners in the county plat of Pine Acres. (See plat view below).

(c) (d) (e) Plan view of corner with ties to at least 4 witness monuments. If in disagreement with previously established corner, show the distances between the two corners and also indicate the ties to the disputed corner.



(i) I, JEROME N. KRAEMER
 (type or print name) certify that the corner location on this record was determined by me or under my direction and control and that this U.S. Public Land Survey Monument Record is correct and complete to the best of my knowledge and belief.

Jerome N. Kraemer 26 Oct. 84
 Signature Date



Index No. E-7

3906050020

U.S. PUBLIC LAND SURVEY MONUMENT RECORD

Note: This form is intended and designed to fulfill all requirements of the Wisconsin Administrative Code, Chapter A-E 7.08 U.S. Public Land Monument Record (3)(a)(b)(c)(d)(e)(f)(g)(h)(i). An additional sheet may be added if necessary to conform with said requirements.

REGISTER OF DEEDS OFFICE
ONEIDA COUNTY
FILED

MAR 14 2018

(a) CORNER LOCATION:

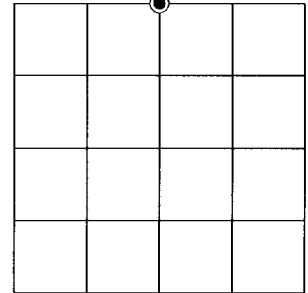
North Quarter Corner of Section 8
Township 39 North
Range 6 East
Town Minocqua
County of Oneida

North:
East:
Datum:
GNSS Method:
GNSS Control:

KYLE J. FRANSON
REGISTER OF DEEDS

(RECORDING AREA)

SECTION 8



(b) HISTORY OF ORIGINAL CORNER ESTABLISHMENT

Original Surveyor:
Date of Survey: Commenced
Completed
Original B.T.'S

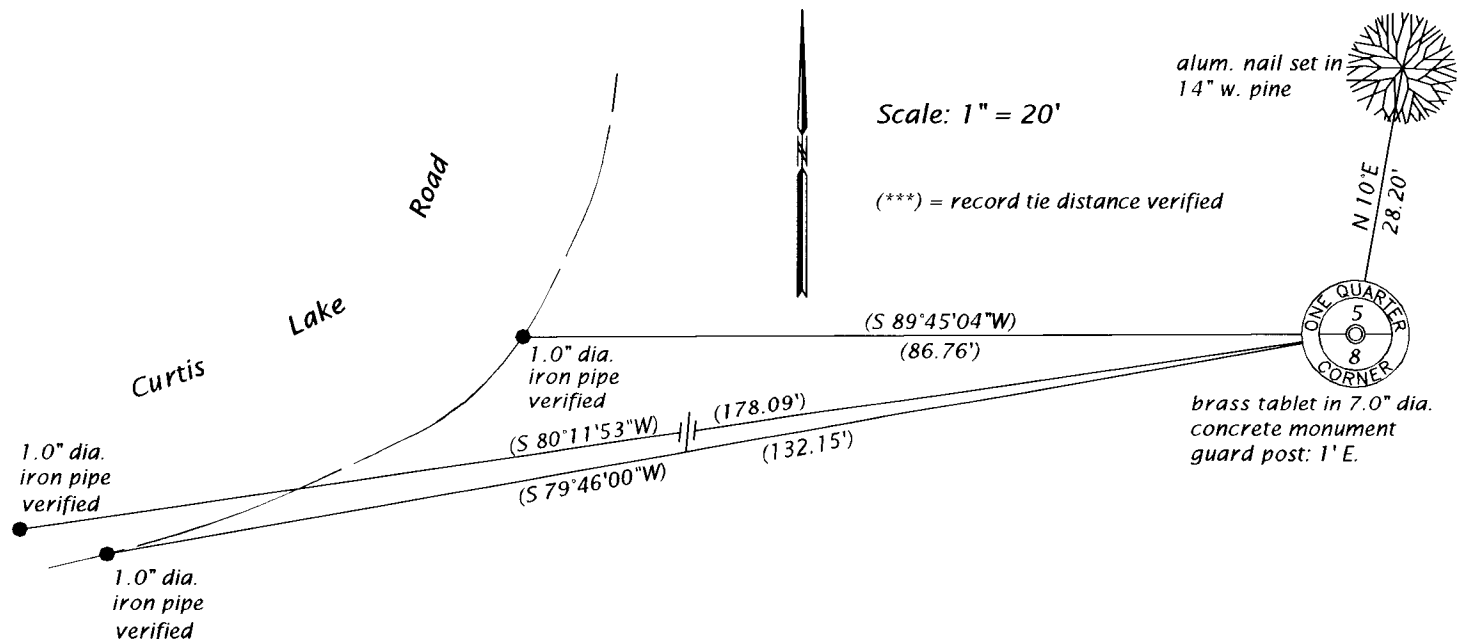
SEE PREVIOUS U.S.P.L.S. MONUMENT RECORD DATED OCTOBER 26, 1984.

(f)(g)(h) DESCRIPTION OF MONUMENT FOUND AT THIS CORNER AND IF IT WAS ACCEPTED, STATE ALL EVIDENCE (MATERIAL, TESTIMONIAL, OCCUPATIONAL, PLATS, RECORD, OTHER MONUMENTS) USED AS A BASIS FOR ESTABLISHING LOCATION. IF NOT ACCEPTED OR IF NOTHING WAS FOUND, STATE EVIDENCE USED AS BASIS FOR ESTABLISHING LOCATION. IF REESTABLISHED THROUGH LOST CORNER PROPORTIONATE METHODS, INDICATE ALL MONUMENTS, DISTANCES AND DIRECTIONS USED TO ESTABLISH. INDICATE TYPE OF MONUMENT AND SIGN POST FOUND OR SET.

This is a perpetuation of a previous U.S.P.L.S. Monument Record by Jerome N. Kramer, RLS, dated October 26, 1984, and filed in the office of the Oneida County Register of Deeds. A complete history of the corner can be found on the previous monument record. I accept the previous location as a true and faithful perpetuation or reestablishment of the original corner location and further perpetuate it as follows.

October 27, 2017, I, James D. Rein, PLS No. S-1234, we found and accepted the brass-capped concrete monument Kraemer had in 1984. The northeast jack pine is dead, the southeast red pine is a stump and the southwest red pine is gone - see below for updated witnesses.

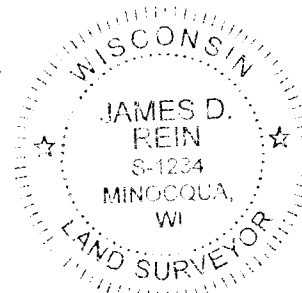
(c)(d)(e) PLAN VIEW OF CORNER WITH TIES TO AT LEAST 4 WITNESS MONUMENTS. IF IN DISAGREEMENT WITH PREVIOUSLY ESTABLISHED CORNER, SHOW THE DISTANCE BETWEEN THE TWO CORNERS AND ALSO INDICATE THE TIES TO THE DISPUTED CORNER.



(i) I, JAMES D. REIN, PROFESSIONAL LAND SURVEYOR NO. S-1234 HEREBY CERTIFY THAT THE CORNER LOCATION ON THIS RECORD WAS DETERMINED BY ME OR UNDER MY DIRECTION AND CONTROL AND THAT THIS U.S. PUBLIC LAND SURVEY MONUMENT RECORD IS CORRECT AND COMPLETE TO THE BEST OF MY KNOWLEDGE AND BELIEF.

[Handwritten Signature]

2-16-18
DATE



INDEX NO. E-7
3906050020