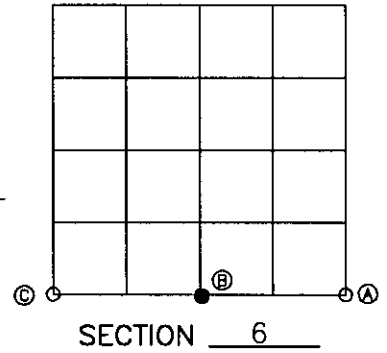


# U.S. PUBLIC LAND SURVEY MONUMENT RECORD

Note: This form is intended and designed to fulfill all requirements of Wisconsin Administrative Code, Chapter A-E 7.08 U.S. Public Land Survey Monument Record (3)(a)(b)(c)(d)(e)(f)(g)(h)(i). An additional sheet may be added if necessary to conform with said requirements.

**(a) CORNER LOCATION:**

S 1/4 corner of Sec. 6 State Plane Coordinates  
 Township 39 North X \_\_\_\_\_  
 Range 6 East Y \_\_\_\_\_  
 Town/City/Village ~~XXXXXX~~ Minocqua Datum Base \_\_\_\_\_  
 County of Oneida



**(b) HISTORY OF ORIGINAL CORNER ESTABLISHMENT**

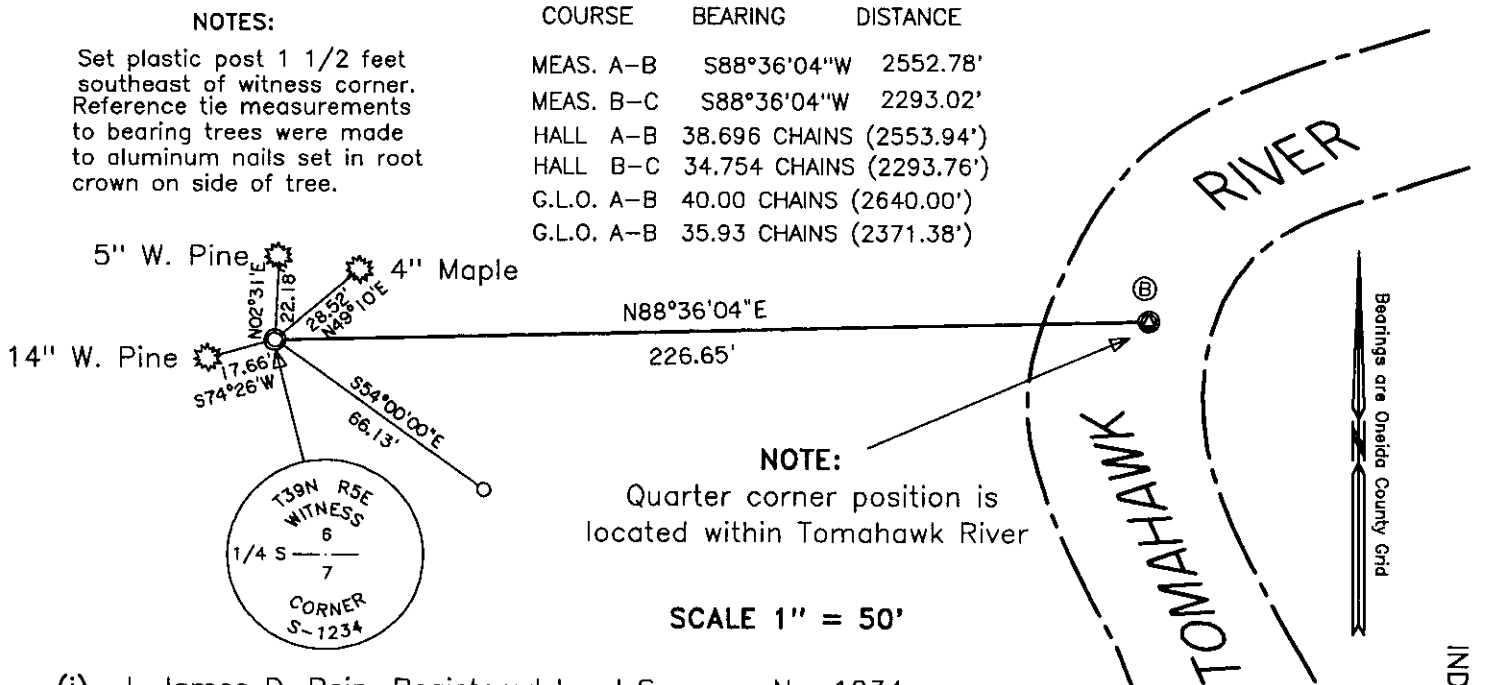
Original Surveyor: Alexander Anderson, Dep. Surv. Original B.T.'S  
 Date of Survey: Commenced Oct. 13th, 1863 Birch 5 S66°E, 165 lks.  
 Completed Oct. 23rd, 1863

**(f)(g)(h) Description of monument found at this corner and if it was accepted, state all evidence (material, testimonial, occupational, plats, records, other monuments) used as a basis for establishing location. If not accepted or if nothing was found, state evidence used as basis for establishing location. If reestablished through lost corner proportionate methods, indicate all monuments, distances and directions used to establish. Indicate type of monument and sign post found or set.**

Sept. 14th, 1936 - ? Hall, Surveyor - On pages 1 and 2, private survey note book 3, in possession of Foltz & Associates, Minocqua, Wisconsin: Survey of south line of Section 6 was unable to located evidence of 1/4 corner between Sections 6 and 7. Thus at proportionate distance between original government section corners set concrete monument & no bearing trees.

Dec. 28th, 1998 - James D. Rein, RLS No. 1234 - The proportionate location for corner is now located in the Tomahawk River. Thus on the section line and 226.65 feet westerly of record corner position we set a Witness Corner on the high bank, being a capped 2 inch diameter x 30 inch long, flange bottom aluminum monument with reference ties as shown in plan view.

**(c)(d)(e) Plan view of corner with ties to at least 4 witness monuments. If in disagreement with previously established corner, show the distance between the two corners and also indicate the ties to the disputed corner.**



(i) I, James D. Rein, Registered Land Surveyor No. 1234, hereby certify that the corner location on this record was determined by me or under my direction and control and that this U.S. Public Land Survey Monument Record is correct and complete to the best of my knowledge and belief.

James D. Rein January 16th, 1999  
 Signature Date



INDEX NO. E 3  
 3906060020

