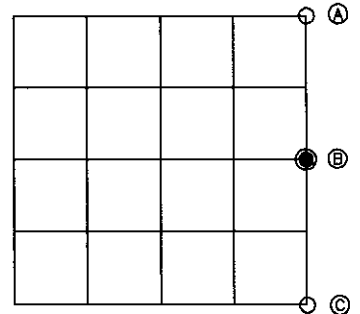


# U.S. PUBLIC LAND SURVEY MONUMENT RECORD

Note: This form is intended and designed to fulfill all requirements of Wisconsin Administrative Code, Chapter A-E 7.08 U.S. Public Land Survey Monument Record (3)(a)(b)(c)(d)(e)(f)(g)(h)(i). An additional sheet may be added if necessary to conform with said requirements.

**(a) CORNER LOCATION:**

East 1/4 corner of Sec. 6 State Plane Coordinates  
 Township 39 North X \_\_\_\_\_  
 Range 6 East Y \_\_\_\_\_  
 Town/City/Village Minocqua Datum Base \_\_\_\_\_  
 County of Oneida



**(b) HISTORY OF ORIGINAL CORNER ESTABLISHMENT**

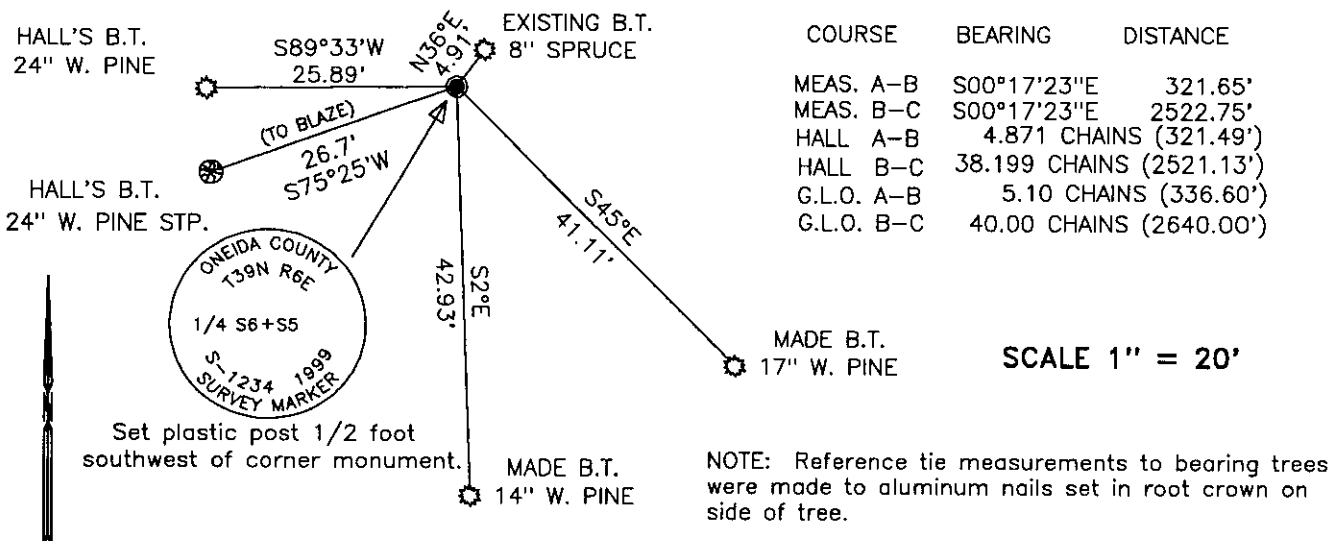
Original Surveyor: Alexander Anderson, Dep. Surv. Original B.T.'S SECTION 6  
 Date of Survey: Commenced Oct. 13th, 1863 Birch 8" N21°W, 71 lks.  
 Completed Oct. 23rd, 1863 Tamarac S50°E, 47 lks.

**(f)(g)(h) Description of monument found at this corner and if it was accepted, state all evidence (material, testimonial, occupational, plats, records, other monuments) used as a basis for establishing location. If not accepted or if nothing was found, state evidence used as basis for establishing location. If reestablished through lost corner proportionate methods, indicate all monuments, distances and directions used to establish. Indicate type of monument and sign post found or set.**

April 26, 1934 - ? Hall, Surveyor - On pages 6 and 7 of private survey note book number 16, in possession of Foltz & Associates, Minocqua, Wisconsin: For survey in Section 5, T39N, R6E, he was unable to recover evidence of original 1/4 corner between Sections 5 and 6. Thus at proportionate distance and on line between original government section corners drove a new scribed post and marked new bearing trees; W. Pine 12" S67°W, 40.5 lks. (26.73'), and a W. Pine 12" S85°W, 39.2 lks. (25.87').

January 4th, 1999 - James D. Rein, RLS No. 1234 - Recovered both of Hall's bearing trees as described above. The southwesterly most tree, with scribe marks showing, has been recently cut for timber. A 4" square saw cut Cedar post, approximately 25 years old, bears Northwest 0.5 feet from a corner position that is harmonious with both Hall's bearing trees, and a record position based upon single proportionate distance on line between the section corners. Thus at this record position we place a capped 2 inch dia. x 30 inch long flange bottom aluminum monument with ties as shown in the plan view.

**(c)(d)(e) Plan view of corner with ties to at least 4 witness monuments. If in disagreement with previously established corner, show the distance between the two corners and also indicate the ties to the disputed corner.**



(i) I, James D. Rein, Registered Land Surveyor No. 1234, hereby certify that the corner location on this record was determined by me or under my direction and control and that this U.S. Public Land Survey Monument Record is correct and complete to the best of my knowledge and belief.

James D. Rein January 16th, 1999  
 Signature Date



INDEX NO. C 5  
3906062000