

U. S. PUBLIC LAND SURVEY MONUMENT RECORD

INSTRUCTIONS :

This record shall show the location of the corner and shall include all of the following nine elements (a through i).

- (a) Identify the corner by reference to the U.S. public land survey system.

RECORD INFORMATION

October 22nd, 1863 - Alex Anderson, U.S. Deputy Surv.
 "Set post for corner of Sec. 7, 8, 17 & 18"
 Witnessed by the following bearing trees:
 Birch 10" N80°E, 24 links (15.84 feet)
 W. Pine 9" N65°W, 12 links (7.92 Feet)

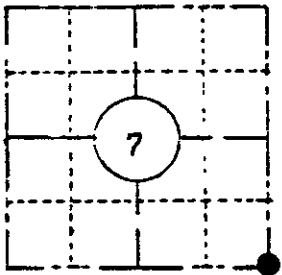
January 17th, 1896 - D. H. Vaughan, Oneida County Surv.
 Found the original trees during survey in Section 8.

December 20th, 1962 - William S. Cameron, R.L.S.
 Survey map in Section 7 identifies the corner as being monumented by a one inch diameter iron pipe witnessed by the following bearing trees:
 5" Bl. Spruce S81°W, 60.7 feet
 2" W. Pine N46°W, 36.0 feet

Compared with all record data & accepted as correct.

Robert H. Vriant 27 Apr 1983
 Oneida County Surveyor

SECTION 7
 T39N R6E



LOCATION SKETCH

(Location of landmark indicated by "●")



- (b) Describe any record evidence, monument evidence, occupational evidence, testimonial evidence or any other material evidence you considered, and whether the monument was found or placed.

Found a one inch inside diameter iron pipe extending fourteen inches above ground, and a scribed three and one-half inch square Cedar post adjacent to the pipe. Corner is witnessed by the following bearing trees:

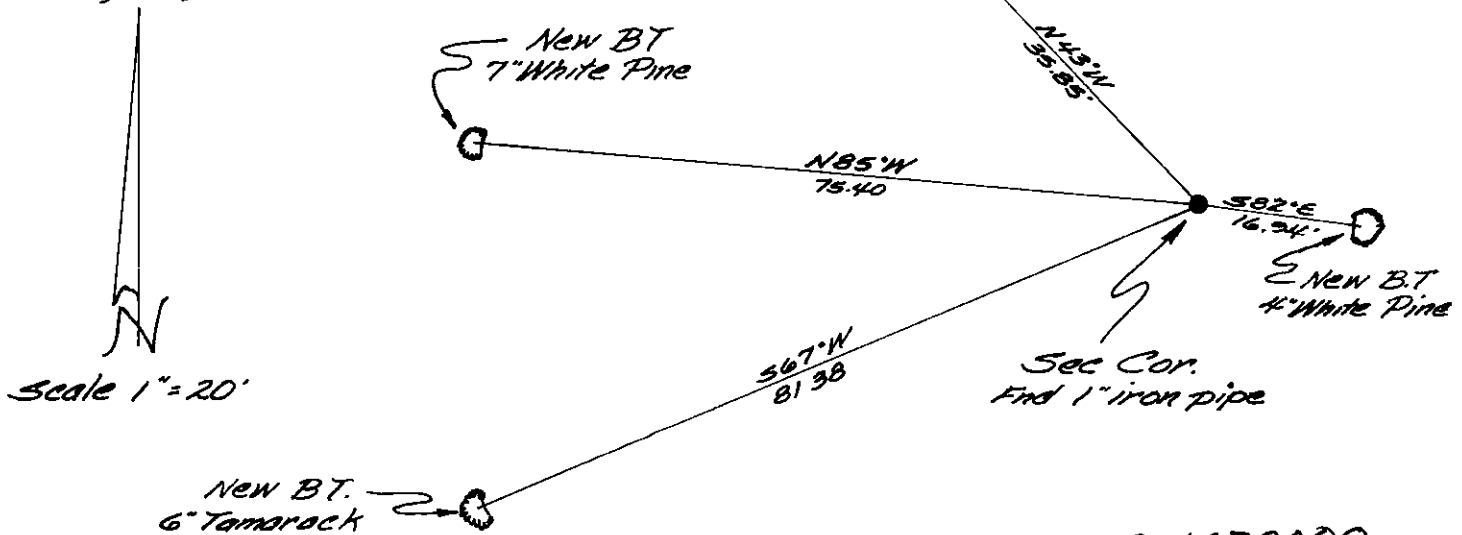
- 6" Black Spruce S82°W, 60.6 feet to face of blaze
- 12" White Birch S56°E, 18.4 feet to face of blaze
- 5" White Pine N43°W, 35.85 feet to an aluminum nail driven in the center of root crown on side of tree.

- (c) In the plan view drawing below, provide reference ties to at least 4 witness monuments, or, if the location is within a municipality, to at least 2 witness monuments. (Witness monuments shall be made of concrete, natural stone, iron or other equally durable material Describe witness monuments.

- (d) Show a plan view drawing depicting the relevant monuments and reference ties which is sufficient in detail to enable accurate relocation of the corner monument if the corner monument is disturbed. Indicate north.

Note:
 Measurements for distance to BT's were made to an aluminum nail driven in the center of root crown on side of tree, unless noted.

Bearings Magnetic



3906070000

(e) Describe any material discrepancy between the location of the corner as restored or reestablished and the location of that corner as previously restored or reestablished by distance and direction. Show the discrepancy on the plan view drawing under (d), above. Show the distances between the corner as previously restored or reestablished and (1) the corner as restored or reestablished, and (2) to at least 2 of the witness monuments shown on the drawing in (d), above.

No discrepancy found.

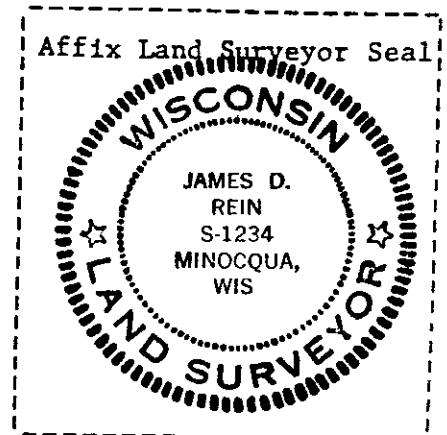
(f) Was the corner restored through acceptance of (1) an obliterated evidence location, or, (2) a found perpetuated location?

Although I found no evidence of the original post or bearing trees, I accepted the existing iron pipe through obliterated evidence and by common report by local surveys for the past twenty years as the best evidence of the original position.

(g&h) Was the corner reestablished through lost corner proportionate methods? If so, show the method, including the directions and distances to other public land survey corners used as evidence or used for proportioning in determining the corner location?

No.

REGISTER OF DEEDS OFFICE
ONEIDA COUNTY, WIS.
FILED
MAY 11 1982
At 4:15 O'clock P.M.
DORIS VERABE KUEHN
REGISTER OF DEEDS



(1) I, JAMES D. REIN, Reg. Land Surveyor No. S-1234
(type or print name) certify that the corner location shown on this record was determined by me or under my direction and control and that this U.S. Public Land Survey Monument Record is correct and complete to the best of my knowledge and belief.

Signature James D Rein Date December 27th, 1982