

# U. S. PUBLIC LAND SURVEY MONUMENT RECORD

**I N S T R U C T I O N S :**

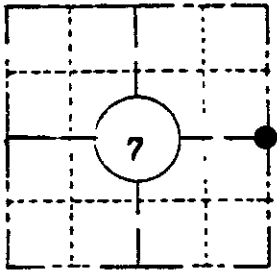
This record shall show the location of the corner and shall include all of the following nine elements (a through i).

- (a) Identify the corner by reference to the U.S. public land survey system.

RECORD INFORMATION

**SECTION 7**

**T39N R6E**



**LOCATION SKETCH**

(Location of landmark indicated by "●")



October 23rd, 1863 - Alex Anderson, U.S. Deputy Surv. Set 1/4 Sec. post witnessed by the following bearing trees:

- B. Pine 11" S36°E, 12 links (7.92 feet)
- B. Pine 9" N48°W, 23 links (15.18 feet)

January 17th, 1896 - D. H. Vaughan, Oneida County Surv. Found the original trees during survey in Section 8.

(Undated map) - F. R. Wincentzen, Deputy County Surveyor for Oneida County. Identifies corner monumented by a 4"x4" post witnessed by a bearing tree:

- Pine 20" N85°E, 30 links (19.8 feet)

December 20th, 1962 - William S. Cameron, R.L.S. Survey map in Section 7 identifies corner as being monumented by a 1/2" iron pipe - north side of road.

October 24th, 1975 - James D. Rein, R.L.S.

Survey map by Wilderness Surveying, Inc., identifies corner as being a found 2" iron pipe witnessed by a 24" N. Pine N78°E, 20.3 feet

- (b) Describe any record evidence, monument evidence, occupational evidence, testimonial evidence or any other material evidence you considered, and whether the monument was found or placed.

Found the same monument per my 1975 survey, a 2" inside diameter iron pipe extending 2 inches above ground, an old red top stake scribed "1/4 S" is adjacent to pipe. The corner is witnessed by an existing bearing tree, a 24" Red Pine bearing N75 1/2°E (true bearing by solar observation), 21.26 feet to an aluminum nail driven in the center of the root crown on the side of tree.

The corner is located 26 feet north of the centerline of Chipmunk Drive (old State Highway "70") as depicted on the Wincentzen survey map and the Right-of-Way plat for existing State Highway "70".

Compared with all record data & accepted as correct.

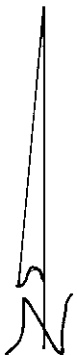
27 Apr 1983

*Robert H. Kinat* Oneida County Surveyor

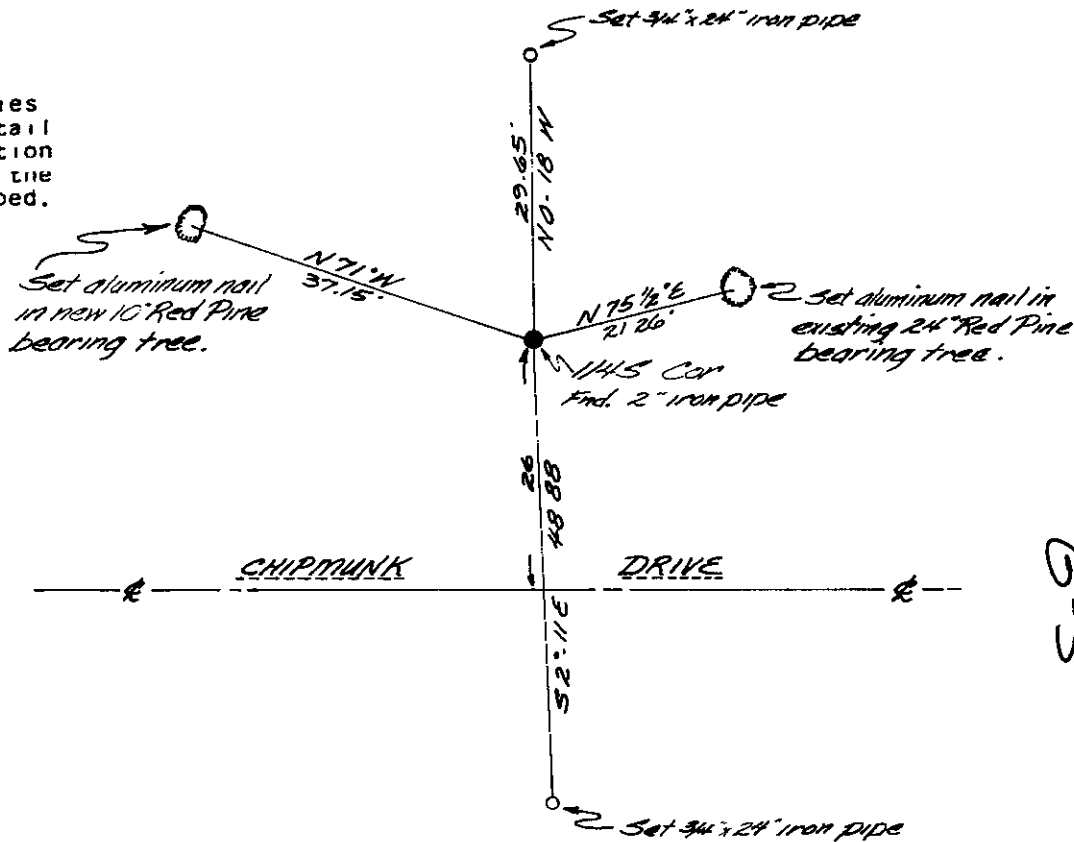
- (c) In the plan view drawing below, provide reference ties to at least 4 witness monuments, or, if the location is within a municipality, to at least 2 witness monuments. (Witness monuments shall be made of concrete, natural stone, iron or other equally durable material)  
Describe witness monuments.

- (d) Show a plan view drawing depicting the relevant monuments and reference ties which is sufficient in detail to enable accurate relocation of the corner monument if the corner monument is disturbed. Indicate north.

*Bearings true based on solar*



*Scale 1" = 20'*



G-5

(e) Describe any material discrepancy between the location of the corner as restored or reestablished and the location of that corner as previously restored or reestablished by distance and direction. Show the discrepancy on the plan view drawing under (d), above. Show the distances between the corner as previously restored or reestablished and (1) the corner as restored or reestablished, and (2) to at least 2 of the witness monuments shown on the drawing in (d), above.

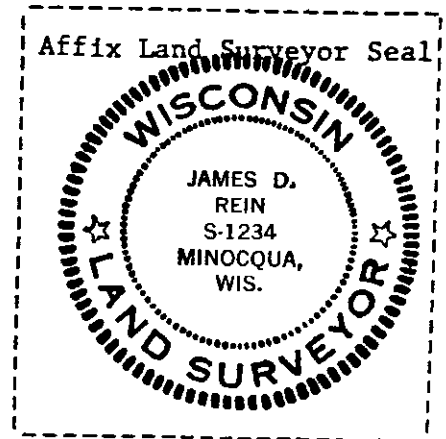
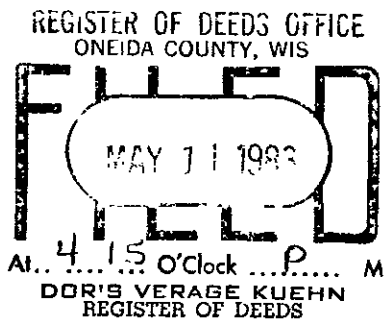
No discrepancy found.

(f) Was the corner restored through acceptance of (1) an obliterated evidence location, or, (2) a found perpetuated location?

Although I found no evidence of the original post or bearing trees, I accepted the existing iron pipe through obliterated evidence and by common report by the local surveys for more than twenty years as the best evidence of the original position.

(g&h) Was the corner reestablished through lost corner proportionate methods? If so, show the method, including the directions and distances to other public land survey corners used as evidence or used for proportioning in determining the corner location?

No.



(i) I, JAMES D. REIN, Reg. Land Surveyor No. S-1234 (type or print name) certify that the corner location shown on this record was determined by me or under my direction and control and that this U.S. Public Land Survey Monument Record is correct and complete to the best of my knowledge and belief.

Signature James D Rein

Date December 27th, 1982