

Stock No. 26273

CERTIFIED LAND CORNER RESTORATION

State of Wisconsin }
County of Oneida } ss.

I John H. Fisher, do hereby certify that on the 13th day of August, 1985, I found evidence of the Southeast corner of Section 8 Township 39 North, Range 6 East, Fourth Principal Meridian, as described hereon; and that from this evidence I established a new monument and accessories as described hereon to perpetuate the original location of this corner:

Description of original monument and accessories and subsequent restorations:

The original Government survey was performed by Alexander Anderson, Deputy Surveyor, in 1863.

Wood Post Set:

Yellow Pine 16" N50°E 44 lks.
Birch 6" N35°W 30 lks.

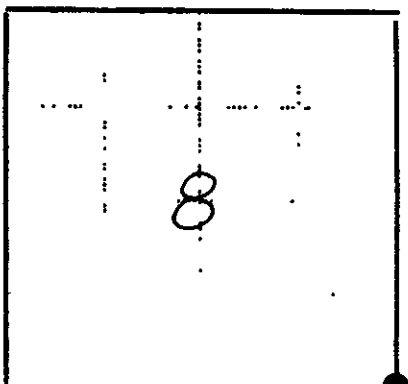
Description of corner evidence found:

1" iron rod in centerline of road.

Norway Pine 18" N89°E 33.70 feet
Oak 15" S59°W 37.90 feet
2" iron pipe S84°E 33.00 feet
2" iron pipe West 33.00 feet

Description of monument and accessories I established to perpetuate the original location of this corner:

Corner in good condition
Set nails in existing bearing trees.



Legend: Solid circle - Corner monument restored; Open square -

Resident witnesses none

Dated at Minocqua Wisconsin, this 13th day of Sept 1985

Signature [Handwritten Signature] Registered Land Surveyor (County Surveyor, Registered Land Surveyor, or other duly authorized official)

Surveyors Registration No. C-836

Office of County of

I hereby certify that the within instrument was filed in this office for record on the day of 19, and was filed in Book No. Page No. of County Records.

Signature Title

# U.S. PUBLIC LAND SURVEY MONUMENT RECORD

MAR 20 2017

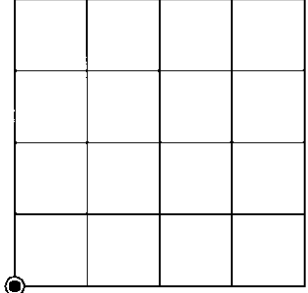
Note: This form is intended and designed to fulfill all requirements of the Wisconsin Administrative Code, Chapter A-E 7.08 U.S. Public Land Monument Record (3)(a)(b)(c)(d)(e)(f)(g)(h)(i). An additional sheet may be added if necessary to conform with said requirements.

AT \_\_\_\_\_ O'CLOCK \_\_\_\_\_ M  
KYLE J. FRANSON  
REGISTER OF DEEDS

(a) CORNER LOCATION: WISCRS - Oneida County  
 Southwest Corner of Section 9 North: 251706.537 US ft  
 Township 39 North East: 175949.926 US ft  
 Range 6 East Datum: NAD 83(2011)  
 Town of Minocqua GNSS Method: RTK - Direct  
 County of Oneida GNSS Control: WISCORS VRS

(RECORDING AREA)

SECTION 9



(b) HISTORY OF ORIGINAL CORNER ESTABLISHMENT

Original Surveyor:  
 Date of Survey: Commenced \_\_\_\_\_ Completed \_\_\_\_\_  
 Original B.T.'S \_\_\_\_\_

**SEE U.S.P.L.S. MONUMENT CORNER  
 DATED SEPTEMBER 5th, 1985.**

(f)(g)(h) DESCRIPTION OF MONUMENT FOUND AT THIS CORNER AND IF IT WAS ACCEPTED, STATE ALL EVIDENCE (MATERIAL, TESTIMONIAL, OCCUPATIONAL, PLATS, RECORDS, OTHER MONUMENTS) USED AS A BASIS FOR ESTABLISHING LOCATION. IF NOT ACCEPTED OR IF NOTHING WAS FOUND, STATE EVIDENCE USED AS BASIS FOR ESTABLISHING LOCATION. IF REESTABLISHED THROUGH LOST CORNER PROPORTIONATE METHODS, INDICATE ALL MONUMENTS, DISTANCES AND DIRECTIONS USED TO ESTABLISH. INDICATE TYPE OF MONUMENT AND SIGN POST FOUND OR SET.

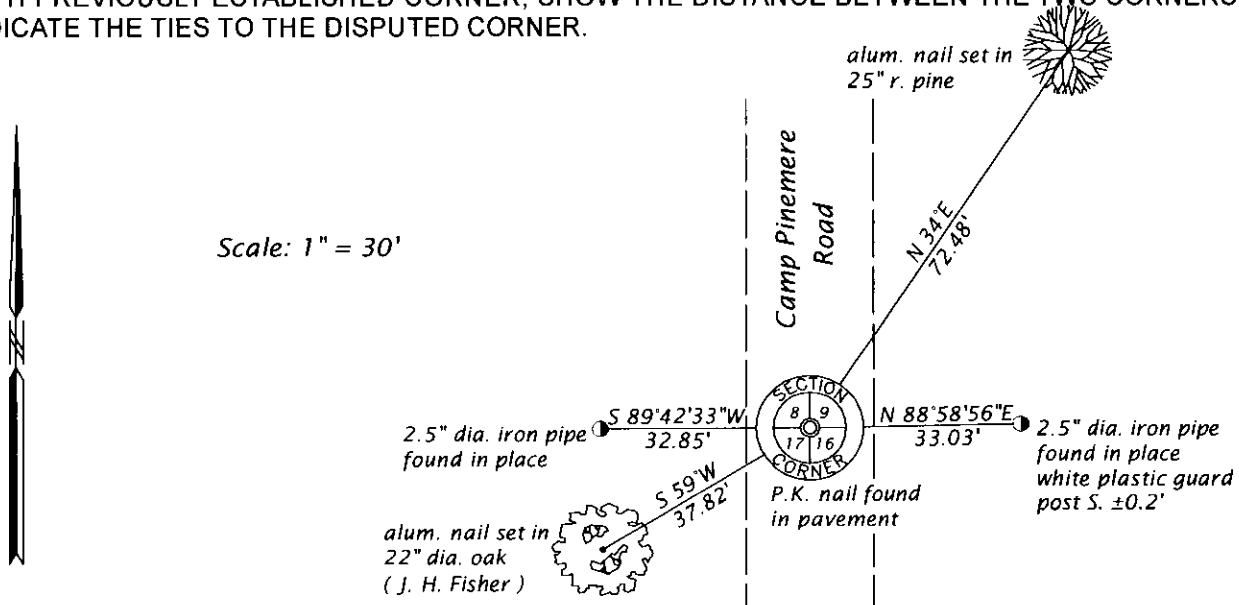
This is a perpetuation of a previous USPLS Monument Record by John H. Fisher, PLS dated September 5th, 1985, and filed in the office of the Oneida County Register of Deeds. I accept the previous location as a true and faithful perpetuation or reestablishment of the original corner location and further perpetuate it as follows.

August 3, 2015, James D. Rein, PLS, found and accepted a 1.25" dia. iron rod in the pavement of Camp Pinemere Road.

March 8, 2017, James D. Rein, PLS, found a P.K. nail in the pavement of Camp Pinemere Road at the section corner position. Camp Pinemere Road was reconstructed in the fall of 2015, and the iron rod was destroyed. The position of the P.K. nail checked very well with the record position of the iron rod previously found in place. See below for updated reference ties.

The coordinate value shown has been verified by at least one of the following methods: 1) comparison to a previously GPS determined published value; 2) the value is the average of two or more GPS observations at a markedly different time; 3) one or more distances were measured back to the GPS observed corner from temporary GPS observed offset locations.

(c)(d)(e) PLAN VIEW OF CORNER WITH TIES TO AT LEAST 4 WITNESS MONUMENTS. IF IN DISAGREEMENT WITH PREVIOUSLY ESTABLISHED CORNER, SHOW THE DISTANCE BETWEEN THE TWO CORNERS AND ALSO INDICATE THE TIES TO THE DISPUTED CORNER.



(i) I, JAMES D. REIN, PROFESSIONAL LAND SURVEYOR NO. S-1234 HEREBY CERTIFY THAT THE CORNER LOCATION ON THIS RECORD WAS DETERMINED BY ME OR UNDER MY DIRECTION AND CONTROL AND THAT THIS U.S. PUBLIC LAND SURVEY MONUMENT RECORD IS CORRECT AND COMPLETE TO THE BEST OF MY KNOWLEDGE AND BELIEF.

*James D. Rein*  
 SIGNATURE

3-10-17  
 DATE



3906080000

INDEX NO. 59