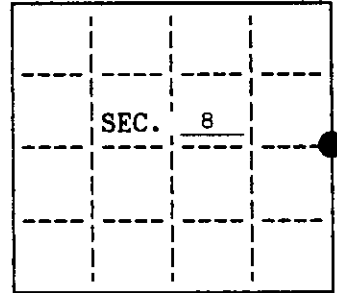


U.S. PUBLIC LAND SURVEY MONUMENT RECORD

Note: This form is intended and designed to fulfill all requirements of Wisconsin Administrative Code, Chapter A-E 7.08 U.S. Public Land Survey Monument Record (3)(a)(b)(c)(d)(e)(f)(g)(h)(i). An additional sheet may be added if necessary to conform with said requirements.

(a) CORNER LOCATION: State Plane Coordinates
E $\frac{1}{4}$ corner of Sec. 8 X ---
 Township 39 North Y ---
 Range 6 East Datum Base ---
 Town/~~City~~ Minocqua County of Oneida



(b) HISTORY OF ORIGINAL CORNER ESTABLISHMENT
 Original Surveyor: Alex Anderson
 Date of Survey: Commenced October, 1863
 Completed October, 1863

Original B.T.'S

W. Pine 7 S72°E, 15 lks.
 Aspen 8 S53°W, 30 lks.

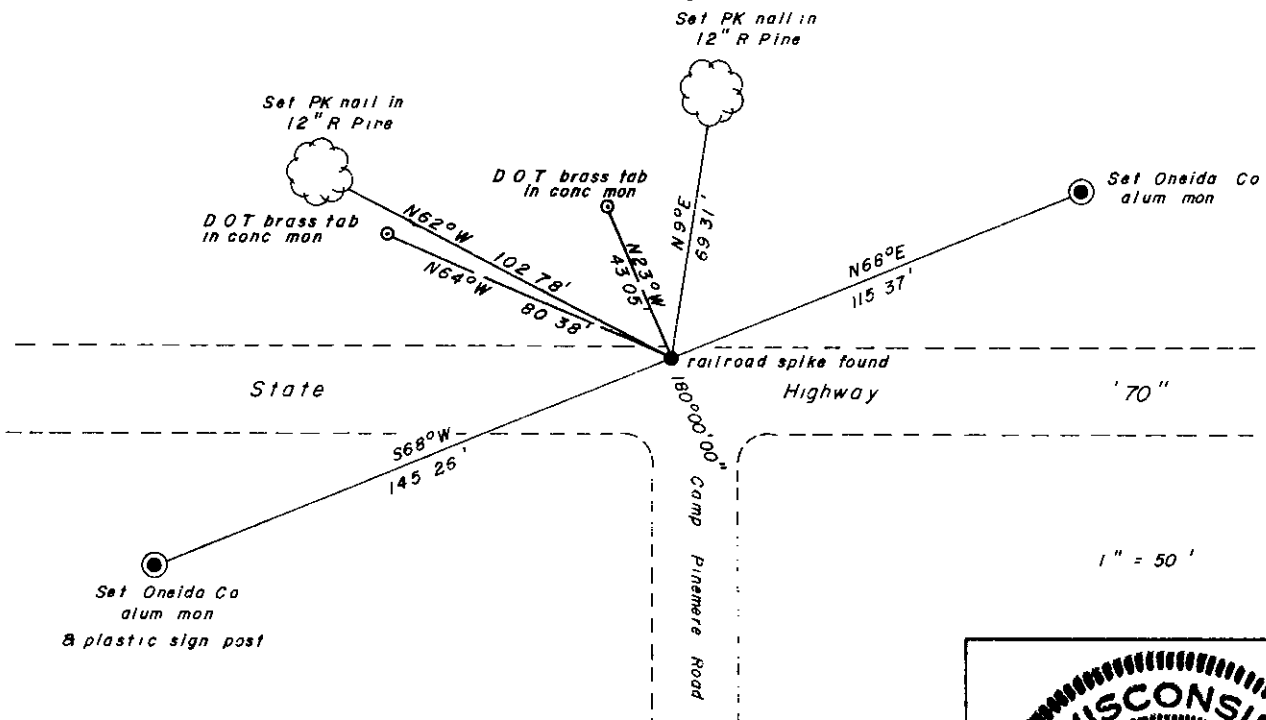
(b)(f)(g)(h) Description of monument found at this corner and if it was accepted, state all evidence (material, testimonial, occupational, plats, records, other monuments) used as a basis for accepting. If not accepted or if nothing was found, state evidence used as basis for establishing location. If reestablished through lost corner proportionate methods, indicate all monuments, distances and directions used to establish. Indicate type of monument and sign post found or set.

February, 1969: Map by Northwoods Surveyors, Inc. describes corner as iron pipe witnessed by 7" Norway Pine N1°E, 68.7'.

October 24, 1975: Map by Wilderness Surveying, Inc. describes corner as railroad spike set over 1" iron pipe found, witnessed by 12" N. Pine N7°E, 68.8'.

March 19, 1992: I found and accepted a railroad spike in the pavement of State Highway 70 witnessed by a 12" R. Pine N9°E, 69.31'. I further witnessed the corner as shown below.

(c)(d)(e) Plan view of corner with ties to at least 4 witness monuments. If in disagreement with previously established corner, show the distances between the two corners and also indicate the ties to the disputed.



(1) I, Charles E. Winkler, S-1431
 hereby certify that the corner location on this record was determined by me or under my direction and control and that this U.S. Public Land Survey Monument Record is correct and complete to the best of my knowledge and belief.

Charles E. Winkler 3/24/92
 Signature Date



INDEX NO 6-9

3966082000

MAR 20 2017

U.S. PUBLIC LAND SURVEY MONUMENT RECORD

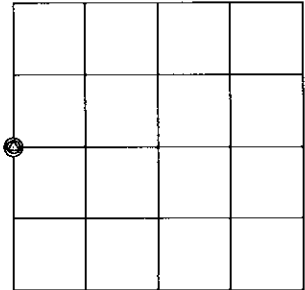
Note: This form is intended and designed to fulfill all requirements of the Wisconsin Administrative Code, Chapter A-E 7.08 U.S. Public Land Monument Record (3)(a)(b)(c)(d)(e)(f)(g)(h)(i). An additional sheet may be added if necessary to conform with said requirements.

AT _____ O'CLOCK _____ M
KYLE J. FRANSON
REGISTER OF DEEDS

(a) CORNER LOCATION: WISCRS - ** County
West Quarter Corner of Section 9 North: *** USft
Township 39 North East: *** USft
Range 6 East Datum:
Town of Minocqua GNSS Method:
County of Oneida GNSS Control:

(RECORDING AREA)

SECTION 9



(b) HISTORY OF ORIGINAL CORNER ESTABLISHMENT

Original Surveyor:
Date of Survey: Commenced
Completed
Original B.T.'S

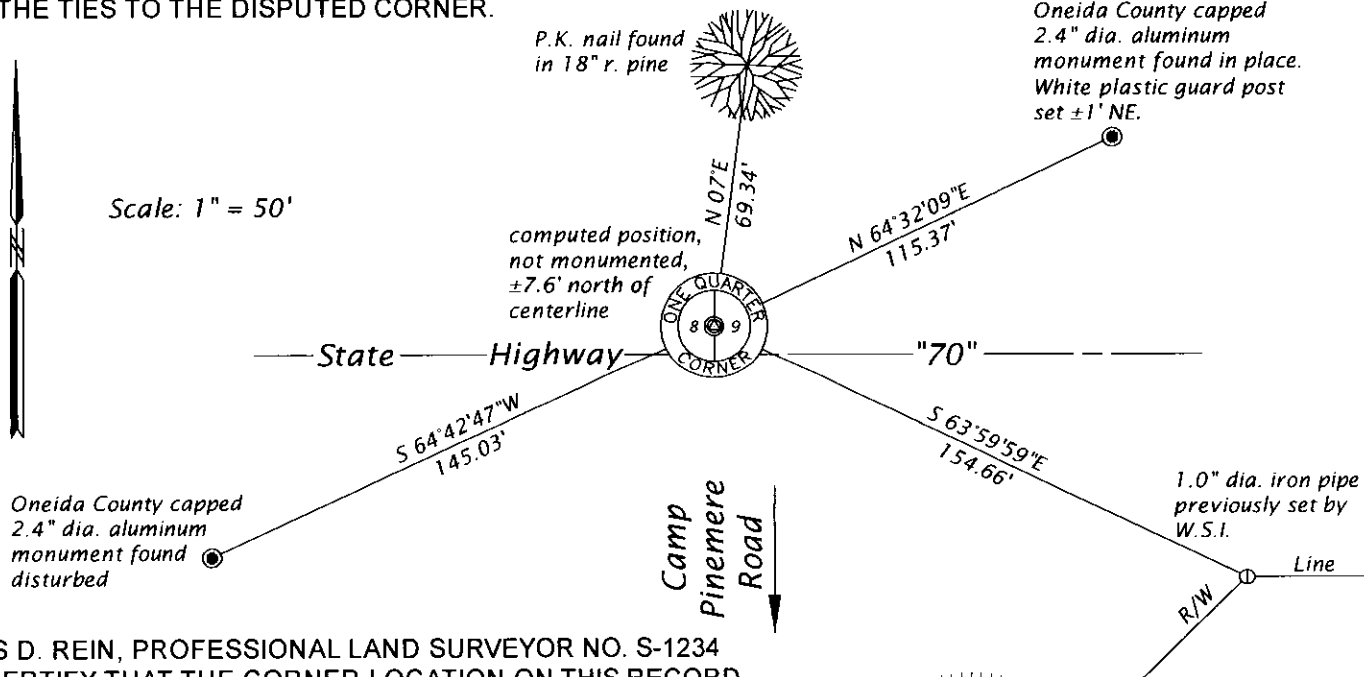
**SEE U.S.P.L.S. MONUMENT CORNER
DATED MARCH 24th, 1992.**

(f)(g)(h) DESCRIPTION OF MONUMENT FOUND AT THIS CORNER AND IF IT WAS ACCEPTED, STATE ALL EVIDENCE (MATERIAL, TESTIMONIAL, OCCUPATIONAL, PLATS, RECORDS, OTHER MONUMENTS) USED AS A BASIS FOR ESTABLISHING LOCATION. IF NOT ACCEPTED OR IF NOTHING WAS FOUND, STATE EVIDENCE USED AS BASIS FOR ESTABLISHING LOCATION. IF REESTABLISHED THROUGH LOST CORNER PROPORTIONATE METHODS, INDICATE ALL MONUMENTS, DISTANCES AND DIRECTIONS USED TO ESTABLISH. INDICATE TYPE OF MONUMENT AND SIGN POST FOUND OR SET.

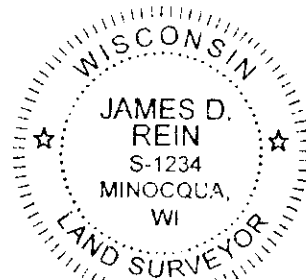
This is a perpetuation of a previous USPLS Monument Record by Charles E. Winkler, PLS, dated March 24, 1992, and filed in the office of the Oneida County Register of Deeds. A complete history of the corner can be found on the previous monument record. I accept the previous location as a true and faithful perpetuation or reestablishment of the original corner location and further perpetuate it as follows.

March 8, 2017, James D. Rein, PLS, - due to road construction the railroad spike was destroyed. Two reference monuments set by Duane L. Johnson, DOT, - see Preservation of Landmarks filed Oct. 28, 1966, were also destroyed. Using our record position and existing reference monuments we have a position which perpetuates previous position of the railroad spike. Due to vehicle traffic, no new monument was set. See updated reference ties below.

(c)(d)(e) PLAN VIEW OF CORNER WITH TIES TO AT LEAST 4 WITNESS MONUMENTS. IF IN DISAGREEMENT WITH PREVIOUSLY ESTABLISHED CORNER, SHOW THE DISTANCE BETWEEN THE TWO CORNERS AND ALSO INDICATE THE TIES TO THE DISPUTED CORNER.



(i) I, JAMES D. REIN, PROFESSIONAL LAND SURVEYOR NO. S-1234 HEREBY CERTIFY THAT THE CORNER LOCATION ON THIS RECORD WAS DETERMINED BY ME OR UNDER MY DIRECTION AND CONTROL AND THAT THIS U.S. PUBLIC LAND SURVEY MONUMENT RECORD IS CORRECT AND COMPLETE TO THE BEST OF MY KNOWLEDGE AND BELIEF.



3906082000

INDEX NO. 69

[Handwritten Signature]
SIGNATURE

3-10-17
DATE