

U.S. PUBLIC LAND SURVEY MONUMENT RECORD

Note This form is intended and designed to fulfill all requirements of Wisconsin Administrative Code, Chapter A-E 7.08 U.S. Public Land Survey Monument Record (3)(a)(b)(c)(d)(e)(f)(g)(h)(i) An additional sheet may be added if necessary to conform with said requirements

(a) CORNER LOCATION:

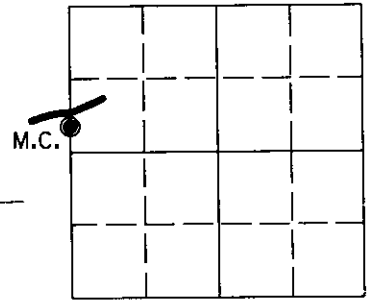
S. Meander corner of Sec 9
 Township 39 North
 Range 6 East
 Town/~~City/Village~~ Minocqua
 County of Oneida

State Plane Coordinates

X _____

Y _____

Datum Base _____



(b) HISTORY OF ORIGINAL CORNER ESTABLISHMENT

Original Surveyor Alexander Anderson

Original B T 'S

SECTION 9

Date of Survey Commenced Oct. 13th, 1863

6" dia. Spruce, S23°E 71ks

Completed Oct. 23rd, 1863

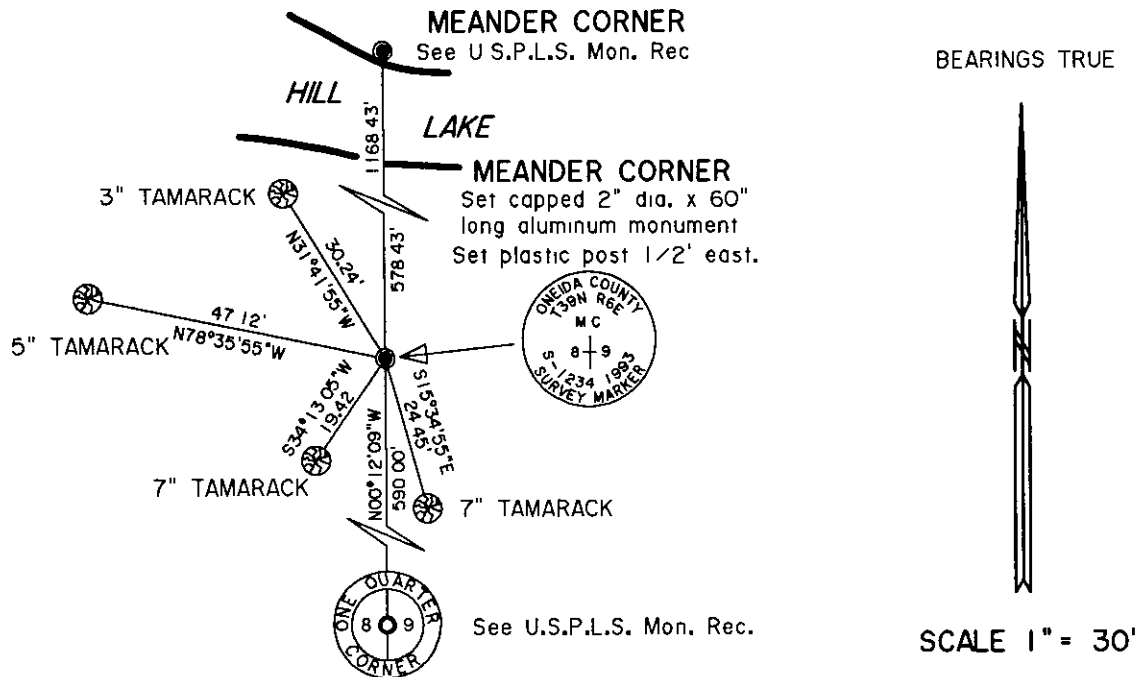
7" dia. Spruce, S40°W 571ks

(f)(g)(h) Description of monument found at this corner and if it was accepted, state all evidence (material, testimonial, occupational, plats, records, other monuments) used as a basis for establishing location. If not accepted or if nothing was found, state evidence used as basis for establishing location. If reestablished through lost corner proportionate methods, indicate all monuments, distances and directions used to establish. Indicate type of monument and sign post found or set.

* Walter A. Hennig, Surveyor, notes on his map dated December 19th, 1947, for a partial subdivision of Section 9, the original government survey record is reversed as evidenced by an original Tamarack bearing tree recovered on the northerly shore of Hill Lake.

May, 1993 - James D. Rein, R.L.S. No. 1234, found no evidence of original corner, or any subsequent remonumentation. We placed a capped 2" dia. x 60" long piston style aluminum monument near the southerly shore of Hill Lake on line between the West Quarter Corner of Section 9 and the remonumented original meander corner at the intersection of the northerly shore of Hill Lake and the west line of said Section 9 as shown in plan. Set plastic marker stake 1/2 foot east of the corner monument and made reference ties to aluminum nails set in side of bearing trees as shown in the plan.

(c)(d)(e) Plan view of corner with ties to at least 4 witness monuments. If in disagreement with previously established corner, show the distance between the two corners and also indicate the ties to the disputed corner.



(i) I, James D Rein, Registered Land Surveyor No 1234, hereby certify that the corner location on this record was determined by me or under my direction and control and that this U.S. Public Land Survey Monument Record is correct and complete to the best of my knowledge and belief

James D Rein 6/26/93
 Signature Date



3906082500

INDEX NO. FG-9