

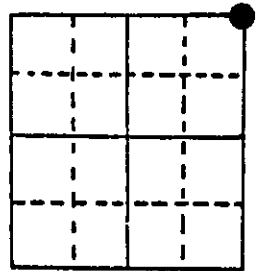
U.S. PUBLIC LAND SURVEY MONUMENT RECORD

Note: This form is intended and designed to fulfill all requirements of Wisconsin Administrative Code, Chapter A-E 5.02, U S Public Land Survey Monument Record (3) (a) (b) (c) (d) (e) (f) (g) (h) (i). An additional sheet may be added if necessary to conform with said requirements.

(a) Corner location: Township 39 North
 Range 6 East

Town MINOCQUA

County ONEIDA



Section 16

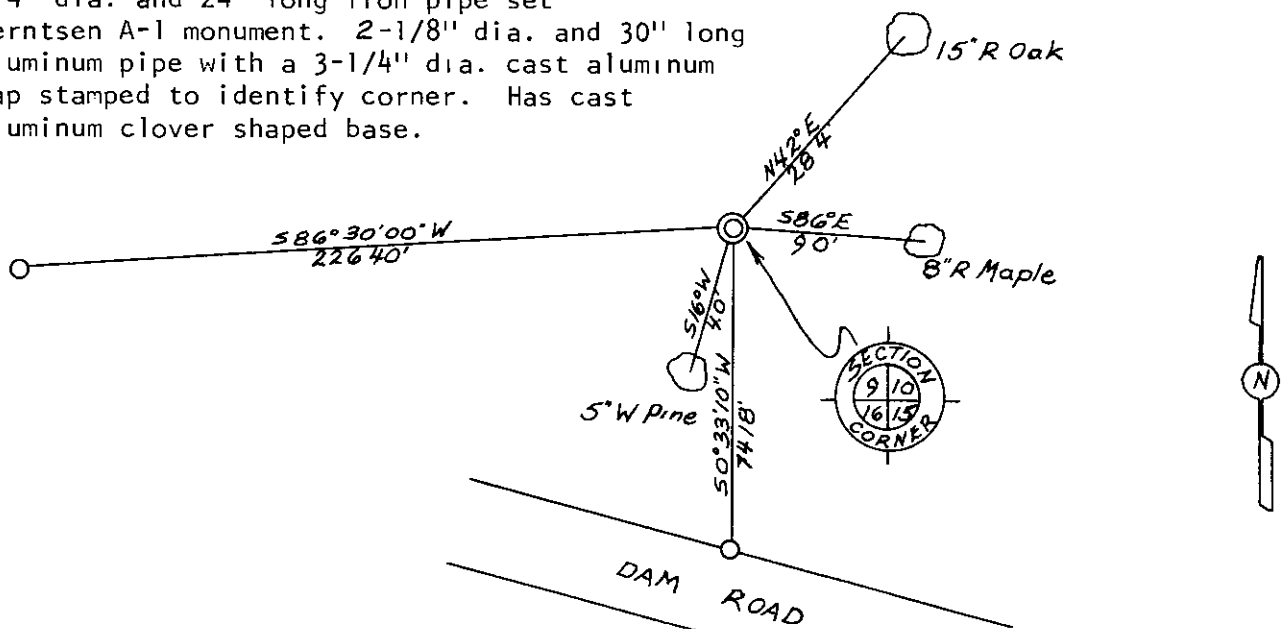
(b) (f) (g) (h) Description of monument found at this corner and if it was accepted, state all evidence (material, testimonial, occupational, plats, records, other monuments) used as a basis for accepting. If not accepted or if nothing was found, state evidence used as basis for establishing location. If reestablished through lost corner proportionate methods, indicate all monuments, distances and directions used to establish.

Oct., 1863 - Alexander Anderson, deputy surveyor - set post for corner to Sections 9, 10, 15 and 16. Original bearing trees. Birch 6", N15°W, 17 links and a White Pine 8", S60°W, 31 links.

Augs. 1983 - Jerome N. Kraemer, R.L.S., found 1-1/4" diameter and 33" long iron pipe along side of reported grey boulder. Iron pipe has been accepted and used by local surveyors. Found bearing trees:
 5" White Pine S16°W, 4.0 feet
 8" Red Maple S86°E, 9.0 feet
 15" Red Oak N42°E, 28.4 feet
 Replaced 1-1/4" diameter and 33" long iron pipe with a Berntsen A-1 monument set 3 inches above ground level. Established ties as shown in plan view below.

(c) (d) (e) Plan view of corner with ties to at least 4 witness monuments. If in disagreement with previously established corner, show the distances between the two corners and also indicate the ties to the disputed corner. Distances measured to center of tree.

- = 3/4" dia. and 24" long iron pipe set
- ⊙ = Berntsen A-1 monument. 2-1/8" dia. and 30" long aluminum pipe with a 3-1/4" dia. cast aluminum cap stamped to identify corner. Has cast aluminum clover shaped base.



(i) I, JEROME N. KRAEMER
 (type or print name) certify that the corner location on this record was determined by me or under my direction and control and that this U.S. Public Land Survey Monument Record is correct and complete to the best of my knowledge and belief.

Jerome N. Kraemer
 Signature

August 5, 1983
 Date



Index No. 5-13

3906096000