

U.S. PUBLIC LAND SURVEY MONUMENT RECORD

REGISTER OF DEEDS OFFICE
ONEIDA COUNTY
FILED

JUN 01 2017

Note: This form is intended and designed to fulfill all requirements of the Wisconsin Administrative Code, Chapter A-E 7.08 U.S. Public Land Monument Record (3)(a)(b)(c)(d)(e)(f)(g)(h)(i). An additional sheet may be added if necessary to conform with said requirements.

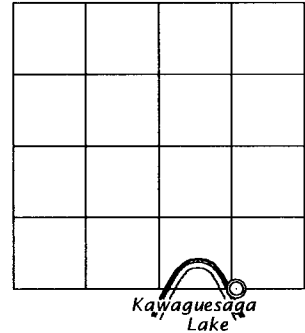
AT _____ O'CLOCK _____ M
KYLE J. FRANSON
REGISTER OF DEEDS

(a) CORNER LOCATION:
E. M.C. south line of Section 9
Township 39 North
Range 6 East
Town of Minocqua
County of Oneida

WISCRS - Oneida County
North: 251771.844 USft
East: 179815.486 USft
Latitude: 45°52' 34.88135" N
Longitude: 89° 44' 29.24363" W
Datum: NAD 83(2011)
GNSS Method: RTK - Direct
GNSS Control: WISCORS VRS
Record North: 251772.124 USft
Record East: 179815.624 USft
Record Datum: NAD 83(1991)

(RECORDING AREA)

SECTION 9



(b) HISTORY OF ORIGINAL CORNER ESTABLISHMENT

Original Surveyor: Alexander Anderson
Date of Survey: Commenced Oct. 13, 1863
Completed Oct. 23, 1863
Original B.T.'S: Birch 5" N 38°E, 14 lks.
Y. Pine 18" S 53°E 23 lks.

(f)(g)(h) DESCRIPTION OF MONUMENT FOUND AT THIS CORNER AND IF IT WAS ACCEPTED, STATE ALL EVIDENCE (MATERIAL, TESTIMONIAL, OCCUPATIONAL, PLATS, RECORD, OTHER MONUMENTS) USED AS A BASIS FOR ESTABLISHING LOCATION. IF NOT ACCEPTED OR IF NOTHING WAS FOUND, STATE EVIDENCE USED AS BASIS FOR ESTABLISHING LOCATION. IF REESTABLISHED THROUGH LOST CORNER PROPORTIONATE METHODS, INDICATE ALL MONUMENTS, DISTANCES AND DIRECTIONS USED TO ESTABLISH. INDICATE TYPE OF MONUMENT AND SIGN POST FOUND OR SET.

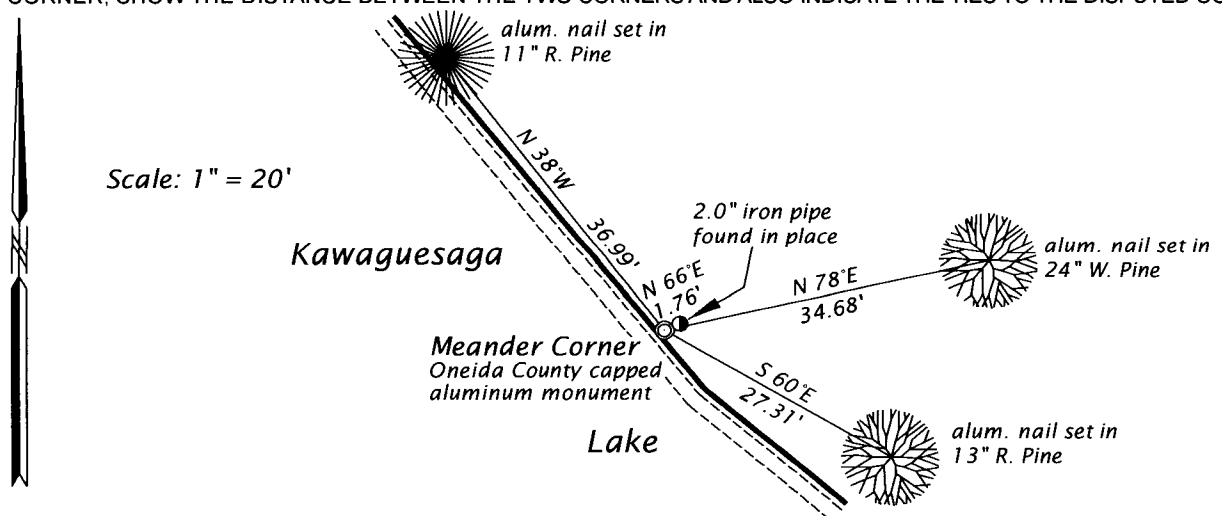
April 6, 1904 - B. F. Dorr, County Surveyor, (Old Field Book 24, pages 8 and 9) survey in Section 9, T39N, R6E, recovered southwest and southeast section corners, set proportioned S 1/4 corner and the west meander corner on line between section corners.

January 4, 1921 - D. H. Vaughan, County Surveyor, (Old Field Book 39, page 55) survey in Section 9, recovered Dorr's S 1/4 corner and west meander corner and set east meander corner on line between the southeast section corner and Dorr's west meander corner, at a distance of 24.16 chains, 1594.56 feet west of the section corner, and made bt's: Aspen 6" North, 10 links; and an Aspen 6" S80°E, 8 links.

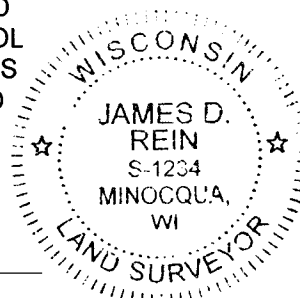
February 2 - 3, 1945 - E. F. Kowalke, Surveyor, (Kowalke Field Book 2, page 75 and Map 1-C-3, filed as B6177 in county surveyor's office) for survey in Section 16, was unable to find any evidence of Dorr's east meander corner. Thus, he re-established the corner on a line between the northeast section corner and the west meander corner at a distance of 1596.5 feet west of the section corner. He monumented the corner with an oak post and made bt's: Maple N11°E, 13.3 feet; and a W. Pine S69°E, 24.6 feet. (CONTINUED ON REVERSE PAGE)

The coordinate value shown has been verified by at least one of the following methods: 1) comparison to a previously GPS determined published value; 2) the value is the average of two or more GPS observations at a markedly different time; 3) one or more distances were measured back to the GPS observed corner from temporary GPS observed offset locations.

(c)(d)(e) PLAN VIEW OF CORNER WITH TIES TO AT LEAST 4 WITNESS MONUMENTS. IF IN DISAGREEMENT WITH PREVIOUSLY ESTABLISHED CORNER, SHOW THE DISTANCE BETWEEN THE TWO CORNERS AND ALSO INDICATE THE TIES TO THE DISPUTED CORNER.



(i) I, JAMES D. REIN, PROFESSIONAL LAND SURVEYOR NO. S-1234 HEREBY CERTIFY THAT THE CORNER LOCATION ON THIS RECORD WAS DETERMINED BY ME OR UNDER MY DIRECTION AND CONTROL AND THAT THIS U.S. PUBLIC LAND SURVEY MONUMENT RECORD IS CORRECT AND COMPLETE TO THE BEST OF MY KNOWLEDGE AND BELIEF.



SIGNATURE

DATE 5-24-17

INDEX NO. J-12-13
3906090016

(CONTINUED FROM REVERSE PAGE)

August 6, 1977 - James D. Rein, RLS No. 1234, Wilderness Surveying, Inc. (Oneida County CSM No. 447, recorded in Volume 2 S. Maps, on pages 447 - 447-A) describe the meander corner monumented by 1 1/4" dia. iron pipe, referenced by a 16" Maple N19°E, 13.3 feet and by a 16" W. Pine S62°E, 25.1 feet. Our field notes for this survey also note an oak post, scribed "M.C." was found adjacent the the 1 1/4" iron pipe, and that a second 1 3/4" dia. iron pipe was found bearing N74°54'59"E, 1.82 feet. The pipe diameters were nominal inside measurement.

March 30, 2017 - James D. Rein, PLS No. 1234, we recovered a 1 3/4" o.d. iron pipe extending 4" above ground, referenced by a 2" o.d. bearing N65°41'47" E, 1.76 feet. When we removed the 1 3/4" o.d. iron pipe, for replacement with an Oneida County capped 2.4" dia. x 30" long aluminum monument, it was found to be 1 3/4" dia. x 36" long well point. I accepted the found monument as a good faith re-establishment of a lost corner, and additional reference ties were made to the corner as shown in the plan.