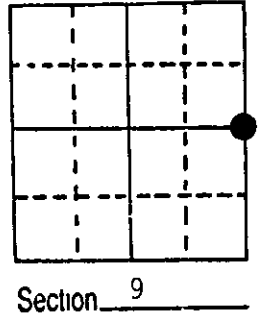


U.S. PUBLIC LAND SURVEY MONUMENT RECORD

Note: This form is intended and designed to fulfill all requirements of Wisconsin Administrative Code, Chapter A-E 5.02, U.S. Public Land Survey Monument Record (3) (a) (b) (c) (d) (e) (f) (g) (h) (i). An additional sheet may be added if necessary to conform with said requirements.

(a) Corner location: Township 39 North
 Range 6 East

East Quarter
 Corner
 Section 9



Town Minocqua
 County Oneida

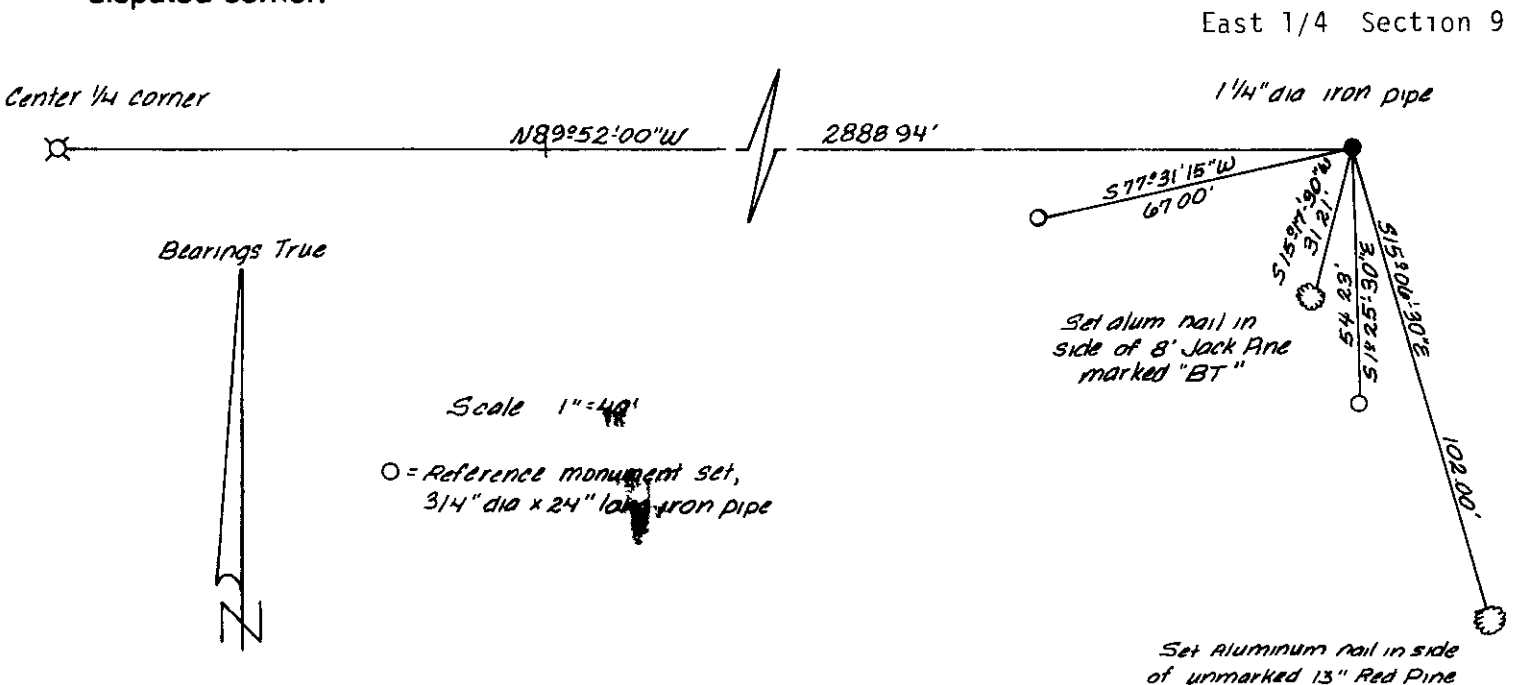
(b) (f) (g) (h) Description of monument found at this corner and if it was accepted, state all evidence (material, testimonial, occupational, plats, records, other monuments) used as a basis for accepting. If not accepted or if nothing was found, state evidence used as basis for establishing location. If reestablished through lost corner proportionate methods, indicate all monuments, distances and directions used to establish.

October 1863- Alexander Anderson, Deputy Surveyor - Set 1/4 Section post
 Original bearing trees: Yellow Pine 6", S30°W, 19 links
 Yellow Pine, 8", S61°E, 7 links

December 24, 1959 - E. F. Kowalke, Surveyor - Map No. 6-B-45 identifies corner as being monumented with iron rod referenced to Highway Posts 104 feet North and 54.6 feet South

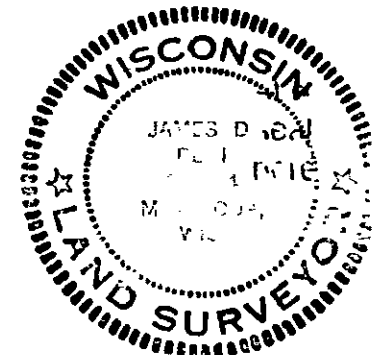
April 30, 1985 - James D. Rein, Registered Land Surveyor - Found a 1-1/4" diameter iron pipe in asphalt pavement six feet South of as-built center line of Old Highway "70". Old right-of-way post bears S1°-25'E, 54 feet. I accept the found monument as the best evidence of a perpetuated corner position.

(c) (d) (e) Plan view of corner with ties to at least 4 witness monuments. If in disagreement with previously established corner, show the distances between the two corners and also indicate the ties to the disputed corner.



(i) I, James D. Rein, Registered Land Surveyor No. S-1234
 (type or print name) certify that the corner location on this record was determined by me or under my direction and control and that this U.S. Public Land Survey Monument Record is correct and complete to the best of my knowledge and belief.

James D. Rein Signature
 June 7th, 1985 Date



34066092000

Index No. 6-13

U.S. PUBLIC LAND SURVEY MONUMENT RECORD

Note: This form is intended and designed to fulfill all requirements of the Wisconsin Administrative Code, Chapter A-E 7.08 U.S. Public Land Monument Record (3)(a)(b)(c)(d)(e)(f)(g)(h)(i). An additional sheet may be added if necessary to conform with said requirements.

(a) CORNER LOCATION:
 East 1/4 corner of Section 9
 Township 39 North
 Range 6 East
 Town of Minocqua
 County of Oneida

COORDINATES
 North: 254306.781
 East: 181543.817
 Control Station: Oneida County #268S *
 Latitude: 45°52'56.50672"
 Longitude: 89°46'20.15317"
 Datum: NAD-83, '91
 Method: Direct RTK-GPS

(b) HISTORY OF ORIGINAL CORNER ESTABLISHMENT

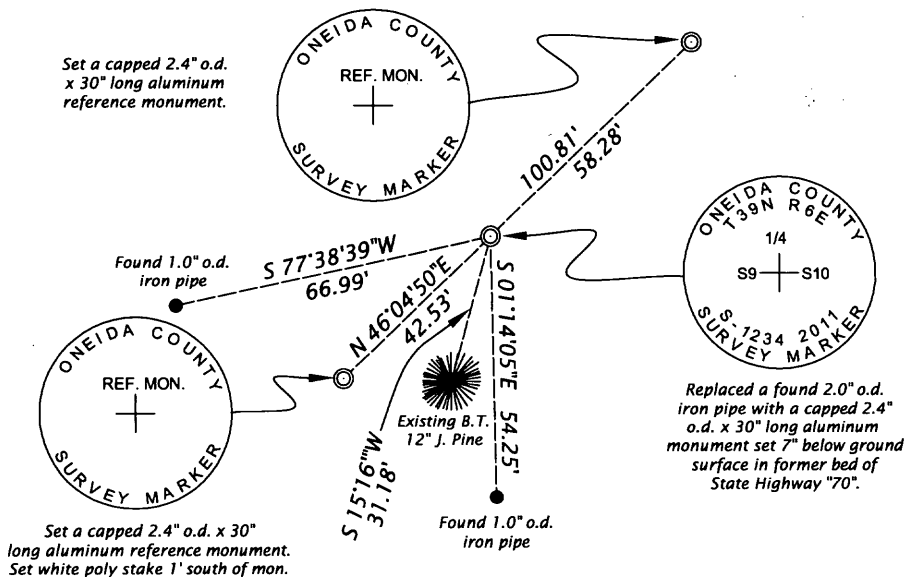
Original Surveyor: Alexander Anderson, Deputy Surveyor
 Date of Survey: Commenced October 13, 1865
 Completed October 23, 1865
 Original B.T.'s: Y. Pine 6" S 30°W, 19 links
 Y. Pine 8" S 61°E, 7 links

*and DOT Control Point T101
 Latitude: 45°53'00.12096"
 Longitude: 89°45'46.59315"

(f)(g)(h) DESCRIPTION OF MONUMENT FOUND AT THIS CORNER AND IF IT WAS ACCEPTED, STATE ALL EVIDENCE (MATERIAL, TESTIMONIAL, OCCUPATIONAL, PLATS, RECORDS, OTHER MONUMENTS) USED AS A BASIS FOR ESTABLISHING LOCATION. IF NOT ACCEPTED OF IF NOTHING WAS FOUND, STATE EVIDENCE USED AS BASIS FOR ESTABLISHING LOCATION. IF REESTABLISHED THROUGH LOST CORNER PROPORTIONATE METHODS, INDICATE ALL MONUMENTS, DISTANCES AND DIRECTIONS TO ESTABLISH. INDICATE TYPE OF MONUMENT AND SIGN POST FOUND OR SET.

May 20, 2011 - James D. Rein, RLS No. 1234 - We replaced a found 2" outside diameter iron pipe as described in my U.S. Public Land Survey Monument Record, dated June 7th, 1985, with a capped 2.4 inch outside diameter aluminum monument set 7 inches below ground surface in former bed of State Highway "70". Set two new capped aluminum reference monuments and also made ties to existing iron pipes and an aluminum nail in the center of the root crown on the side of an existing 12" Jack Pine bearing tree all as shown below in plan.

(c)(d)(e) PLAN VIEW OF CORNER WITH TIES TO AT LEAST 4 WITNESS MONUMENTS. IF IN DISAGREEMENT WITH PREVIOUSLY ESTABLISHED CORNER, SHOW THE DISTANCE BETWEEN THE TWO CORNERS AND ALSO INDICATE THE TIES TO THE DISPUTED CORNER.



Bearings Oneida County Grid, based on RTK-GPS control.

Scale 1" = 40'

(i) I, JAMES D. REIN, PROFESSIONAL LAND SURVEYOR NO. S-1234 HEREBY CERTIFY THAT THE CORNER LOCATION ON THIS RECORD WAS DETERMINED BY ME OR UNDER MY DIRECTION AND CONTROL AND THAT THIS U.S. PUBLIC LAND SURVEY MONUMENT RECORD IS CORRECT AND COMPLETE TO THE BEST OF MY KNOWLEDGE AND BELIEF.

[Handwritten Signature]
 SIGNATURE
 12-18-11
 DATE



INDEX NO. G-13

3906092000

