

Stock No. 26273

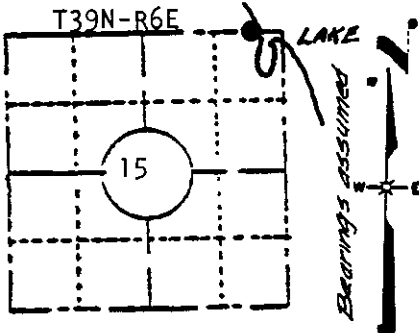
U. S. PUBLIC LAND SURVEY MONUMENT RECORD

INSTRUCTIONS:

(a) Identify the corner by reference to the U.S. public land survey system.

This record shall show the location of the corner and shall include all of the following nine elements (a through i).
 October, 1863- Alexander Anderson, Deputy Surveyor - intersect lake and set meander corner Original bearing trees:
 Tamarack 10" N19°W, 66 links (43.56 feet)
 Spruce 5" S38°E, 39 links (25.74 feet)
 March 17, 1903- B. F. Dorr, Oneida County Surveyor, found Meander Corner and original bearing trees:
 Tamarack Stub, N19°W, 66 links
 Low Spruce Stump, S38°E, 37 links
 New Tamarack 4" N34-1/2°W, 28 links V 5°
 Dec. 5, 1916- D. H. Vaughan, Oneida County Surveyor, found stump of original tree and post set by Dorr
 June-Aug., 1948- Walter A. Hennig, Surveyor. Private survey map in Government Lots 1 and 5 for Theo Laabs, identifies original meander corner 'Found Dorr's Tamarack 4"', N34-1/2°W, 28 links. Post set in 1906 washed out. Set new Tam stake-marked M.C.' Set Witness Corner to M.C. Cedar Post 5.5 west of of M.C. New BT's Tam 10 S5°W, 4.4 ft ; Tam stub 6" N25°W, 15.6 feet"
 Dec. 23rd, 1960- F. R. Wincentzen, Reg. Land Surveyor-Genisot Engineering Co Drawing No. 2716-1 identifies M.C. as being monumented with iron pipe and scribed wood post.

EAST MEANDER CORNER
 NORTH LINE - SECTION 15



LOCATION SKETCH

(Location of landmark indicated by "●")

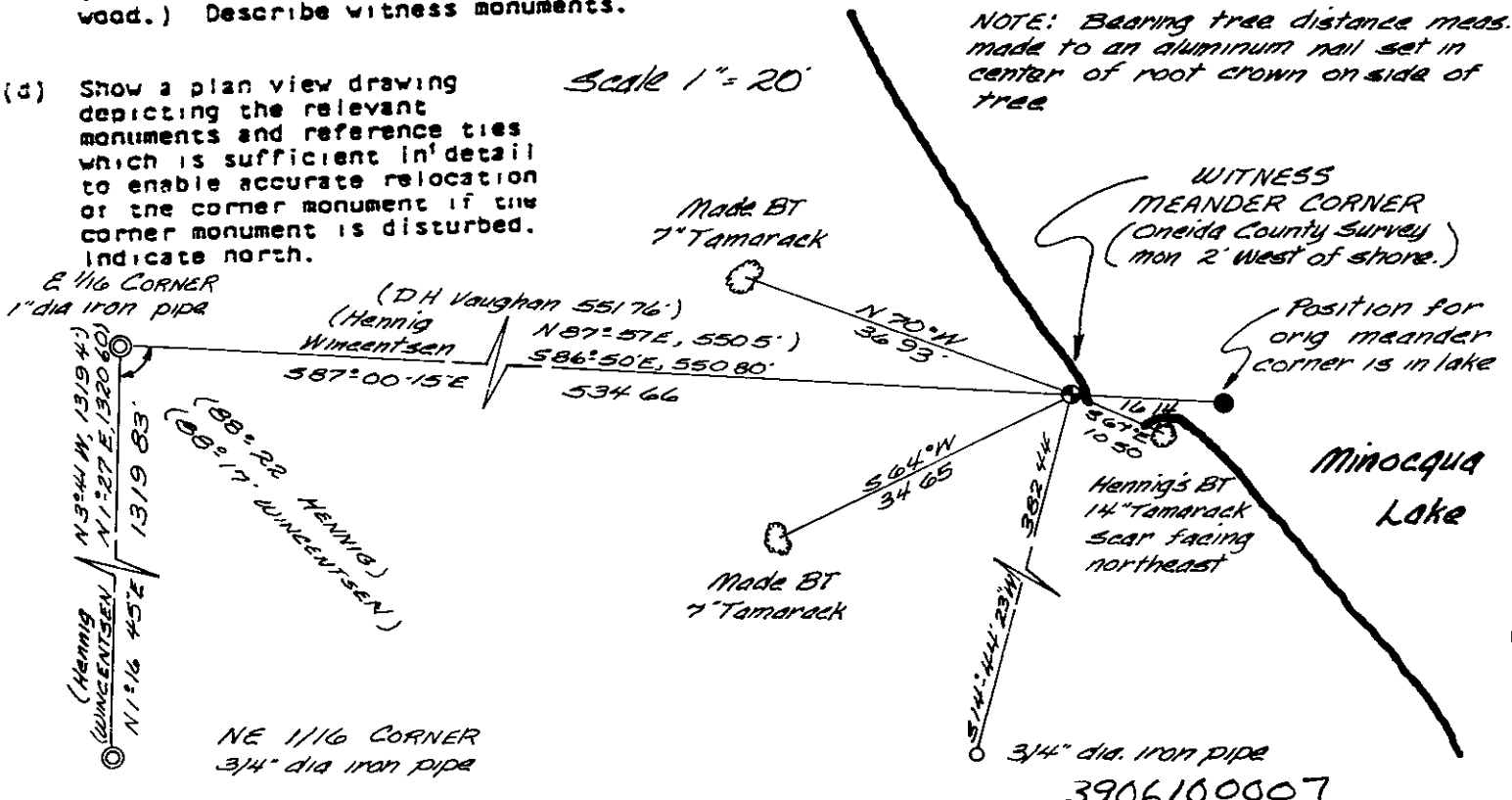
(b) Describe any record evidence, monument evidence, occupational evidence, testimonial evidence or any other material evidence you considered, and whether the monument was found or placed.

The record position for the meander corner, based upon survey ties to the East sixteenth corner as shown on the Hennig and Wincentzen maps now place the corner in Minocqua Lake. The shoreline is bog, eroded by recent beaver activity. Set witness meander corner, an Oneida County Survey Monument (cast aluminum Bernstein Monument) 3-1/2" dia. cap, 2" dia. pipe, 72" long, marked to identify corner at an intersection of the westerly shore of Minocqua Lake with the north line of Section 15 by record bearing angle related to the monumented west line of Government Lot 1, as shown on the Wincentzen map.

(c) In the plan view drawing below, provide reference ties to at least 4 witness monuments, or, if the location is within a municipality, to at least 2 witness monuments. (Witness monuments shall be made of concrete, natural stone, iron or other equally durable material, except wood.) Describe witness monuments.

(d) Show a plan view drawing depicting the relevant monuments and reference ties which is sufficient in detail to enable accurate relocation of the corner monument if the corner monument is disturbed. Indicate north.

Scale 1" = 20'



(e) Describe any material discrepancy between the location of the corner as restored or reestablished and the location of that corner as previously restored or reestablished by distance and direction. Show the discrepancy on the plan view drawing under (d), above. Show the distances between the corner as previously restored or reestablished and (1) the corner as restored or reestablished, and (2) to at least 2 of the witness monuments shown on the drawing in (d), above.

NONE

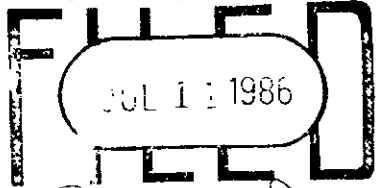
(f) Was the corner restored through acceptance of (1) an obliterated evidence location, or, (2) a found perpetuated location?

The corner was restored through acceptance of an obliterated evidence location.

(g&h) Was the corner reestablished through lost corner proportionate methods? If so, show the method, including the directions and distances to other public land survey corners used as evidence or used for proportioning in determining the corner location?

No

REGISTER OF DEEDS OFFICE
ONEIDA COUNTY, WIS.



At...8:00 O'Clock...A...M
DORIS VERAGE KUEHN
REGISTER OF DEEDS

(i) I, JAMES D. REIN, Reg. Land Surveyor No. S-1234
(type or print name) certify that the corner location shown on this record was determined by me or under my direction and control and that this U.S. Public Land Survey Monument Record is correct and complete to the best of my knowledge and belief.

James D. Rein June 30th, 1983
Signature Date

