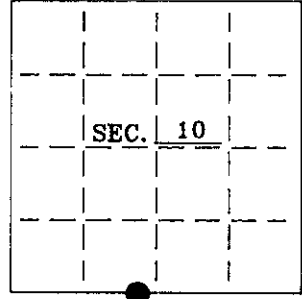


U. S. PUBLIC LAND SURVEY MONUMENT RECORD

Note: This form is intended and designed to fulfill all requirements of Wisconsin Administrative Code-Chapter A-E 7.08 U. S. Public Land Survey Monument Record (3)(a)(b)(c)(d)(e)(f)(g)(h)(i). An additional sheet may be added if necessary to conform with said requirements.

(a) CORNER LOCATION: State Plane Coordinates
Meander corner of Sec. 10 X ---
 Township 39 North Y ---
 Range 6 East Datum Base ---
 Town/~~XXX~~ Minocqua County of Oneida



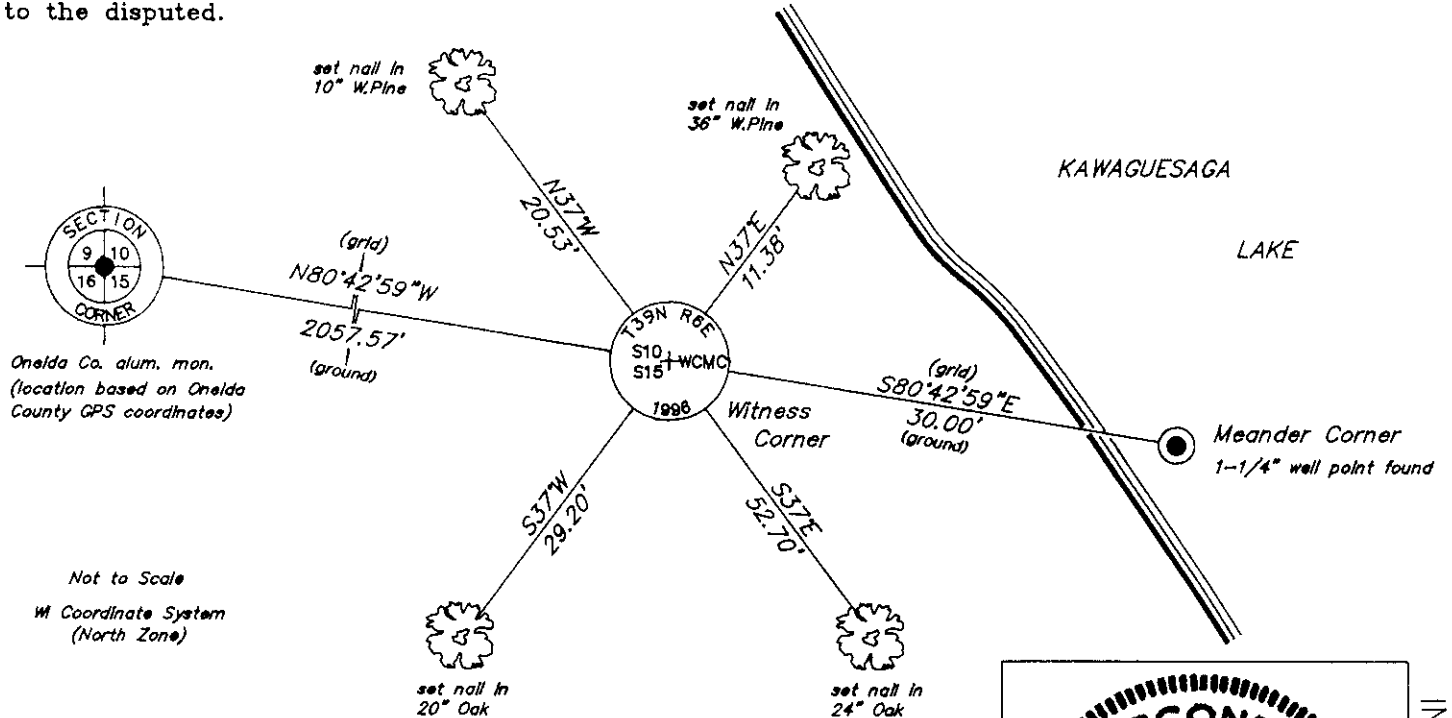
(b) HISTORY OF ORIGINAL CORNER ESTABLISHMENT: Original B.T.'S
 Original Surveyor: Alexander Anderson
 Date of Survey: Commenced October 1863 none
 Completed October 1863

(b)(f)(g)(h) Description of monument found at this corner and if it was accepted—state all evidence (material—testimonial—occupation—plats—records—other monuments) used as a basis for accepting. If not accepted or if nothing was found state evidence used as basis for establishing location. If reestablished through lost corner proportionate methods indicate all monuments—distances and directions used to establish. Indicate type of monument and sign post found or set.

June, 1976: Certified Survey Map by Wilderness Surveying indicates corner is marked by a 1-1/4" well point and witnessed by a 36" White Pine N59°W, 26.5'.

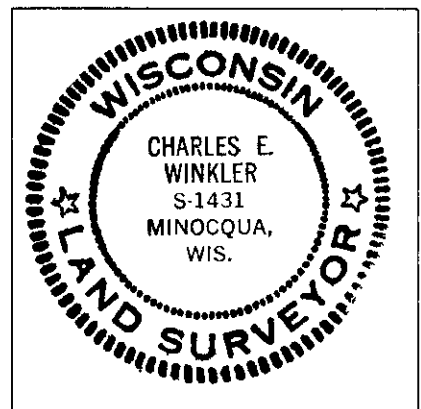
August 1, 1996: I found and accepted a 1-1/4" well point 2 feet on the lake side of the high water mark of Kawaguesaga Lake and witnessed by a 36" White Pine N59°W, 26.5 feet. I set a 2-1/2" dia. 30" long Oneida County aluminum monument as a witness corner as shown below. I established accessories as shown below and set a plastic sign post 1 foot Northeast of the witness corner.

(c)(d)(e) Plan view of corner with ties to at least 4 witness monuments. If in disagreement with previously established corner—show the distances between the two corners and also indicate the ties to the disputed.



(i) I Charles E. Winkler, Registered Land Surveyor
 hereby certify that the corner location on this record was determined by me or under my direction and control and that this U.S. Public Land Survey Monument Record is correct and complete to the best of my knowledge and belief.

Charles E. Winkler 8/19/1996
 Signature Date



INDEX NO. J-14,15