

U.S. PUBLIC LAND SURVEY MONUMENT RECORD

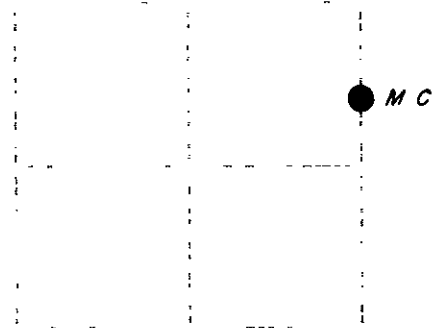
Note: This form is intended and designed to fulfill all requirements of Wisconsin Administrative Code, Chapter N-E 7.08 U.S. Public Land Survey Monument Record (3)(a)(b)(c)(d)(e)(f)(g)(h)(i). An additional sheet may be added if necessary to conform with said requirements.

(a) Corner location: Township 39 North

Range 6 East

Town of Minocqua

Oneida County, Wisconsin



Section 10

(b)(1)(g)(h): Description of monument found at this corner and if it was accepted, state all evidence (material, testimonial, occupational, plats, records, other monuments) used as a basis for accepting. If not accepted or if nothing was found, state evidence used as basis for establishing location. If reestablished through lost corner proportionate methods, indicate all monuments, distances and directions used to establish. Indicate type of monument found or set and sign post.

October, 1867: Alexander Anderson set a wood post: Tamarack 5' N80°W, 8 lks., Tamarack 5' N63°E, 13 lks.

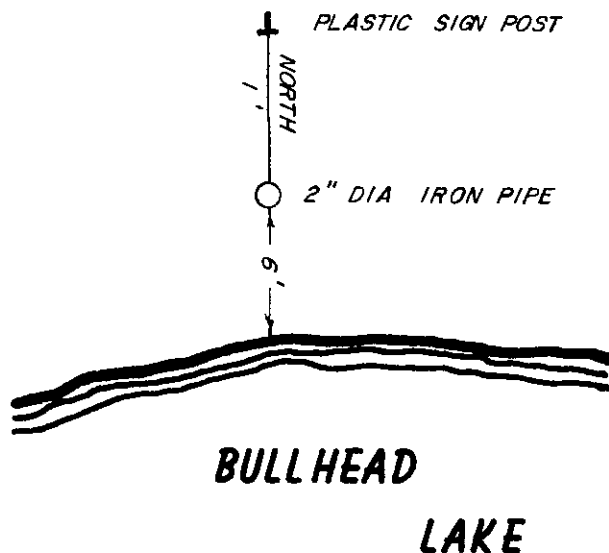
November 12, 1975: Map B-1253 by Lloyd Scott shows corner as iron pipe and post.

December 20, 1979: Map C-176 by John H. Fisher and Associates shows corner as 1-1/2" iron pipe.

7-10-85, 8-22-87, 7-24-87: John H. Fisher and Associates certified survey maps show this corner as 1-1/2" iron pipe.

November 15, 1989: I found and accepted a 2" dia. iron pipe with scribed wood post in floating bog. It appears the pipe is fairly stable so I did not set a replacement monument. This corner location can be reproduced through previous survey information in the area. No trees were available for witnesses so I set a plastic sign post North, 1 post. Bullhead Lake nears South, 5 feet.

(c)(d)(e) Plan view of corner with ties to at least four witness monuments. If in disagreement with previously established corner, show the distances between the two corners and also indicate the ties to the disputed corner.



I, Jeffrey W. Austin, Registered Land Surveyor S-1885 certify that the corner location on this record was determined by me or under my direction and control and that this U.S. Public Land Survey Monument Record is correct and complete to the best of my knowledge and belief.

JANUARY 23, 1990
Date



INDEX NO 6E-17
Pg 17

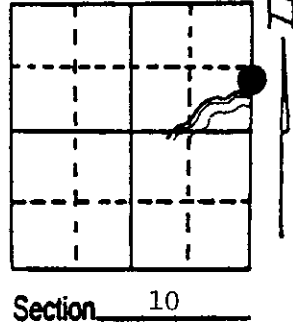
U.S. PUBLIC LAND SURVEY MONUMENT RECORD

Note: This form is intended and designed to fulfill all requirements of Wisconsin Administrative Code, Chapter A-E 7.08 U.S. Public Land Survey Monument Record (3) (a) (b) (c) (d) (e) (f) (g) (h) (i). An additional sheet may be added if necessary to conform with said requirements.

(a) Corner location: Township 39 North
 Range 6 East/West

Town/City/Village Minocqua

County Oneida

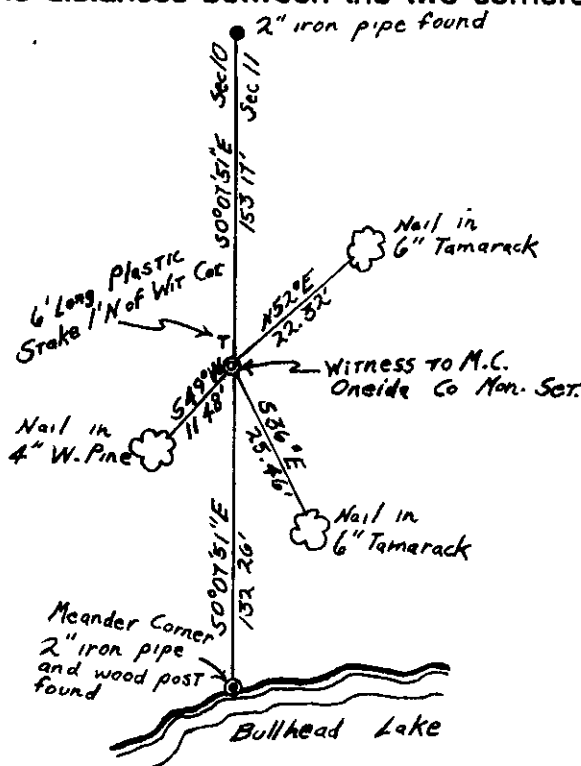


Section 10

(b) (f) (g) (h) Description of monument found at this corner and if it was accepted, state all evidence (material, testimonial, occupational, plats, records, other monuments) used as a basis for accepting. If not accepted or if nothing was found, state evidence used as basis for establishing location. If reestablished through lost corner proportionate methods, indicate all monuments, distances and directions used to establish. Indicate type of monument found or set and sign post.

- 1863 - Original meander corner was set by Alexander Anderson and he tied to the following bearing trees: Tam. 5" N80°W, 8 lks. Tam. 5" N63°E, 13 lks.
- 1960 - Northwoods Surveyors set a 1 1/4" iron pipe next to a wood post they found; said post was set by E. F. Kowalke.
- 1967 - While surveying the plat of West Lake Subdivision, Northwoods Surveyors replaced the 1 1/4" iron pipe with a 2" iron pipe.
- 1990 - I found and accepted the 2" iron pipe as set by Northwoods Surveyors and the wood post set by Kowalke. I set Oneida Co. alum. mon. as witness corner north of Meander Corner location. Meander Corner is on a floating bog and I set the witness corner on firm ground.

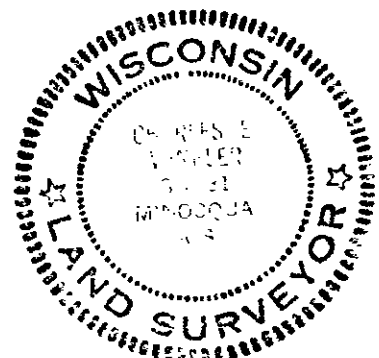
(c) (d) (e) Plan view of corner with ties to at least 4 witness monuments. If in disagreement with previously established corner, show the distances between the two corners and also indicate the ties to the disputed corner.



REGISTER OF DEEDS OFFICE
 ONEIDA COUNTY WIS
FILED
 JUL 11 1990
 At _____ O Clock _____ M
THOMAS H. LEIGHTON
 REGISTER OF DEEDS

(i) I, Charles E. Winkler
 (type or print name) certify that the corner location on this record was determined by me or under my direction and control and that this U.S. Public Land Survey Monument Record is correct and complete to the best of my knowledge and belief.

Charles E Winkler 6-13-90
 Signature Date



3906102800
 Stamp

Index No. F.G. - 17

U.S. PUBLIC LAND SURVEY MONUMENT RECORD

REGISTER OF DEEDS OFFICE
ONEIDA COUNTY
FILED

DEC 12 2017

Note: This form is intended and designed to fulfill all requirements of the Wisconsin Administrative Code, Chapter A-E 7.08 U.S. Public Land Monument Record (3)(a)(b)(c)(d)(e)(f)(g)(h)(i). An additional sheet may be added if necessary to conform with said requirements.

AT _____ O'CLOCK _____ M
KYLE J. FRANSON
REGISTER OF DEEDS

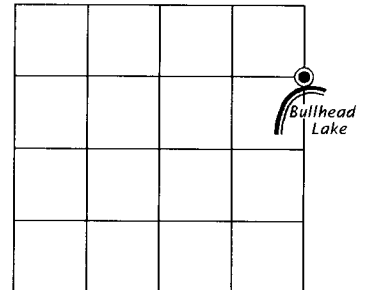
(a) CORNER LOCATION:

Witness Meander Corner of Section 10
Township 39 North
Range 6 East
Town of Minocqua
County of Oneida

North:
East:
Datum:
GNSS Method:
GNSS Control:

(RECORDING AREA)

SECTION 10



(b) HISTORY OF ORIGINAL CORNER ESTABLISHMENT

Original Surveyor:
Date of Survey: Commenced _____ Completed _____
Original B.T.'S _____

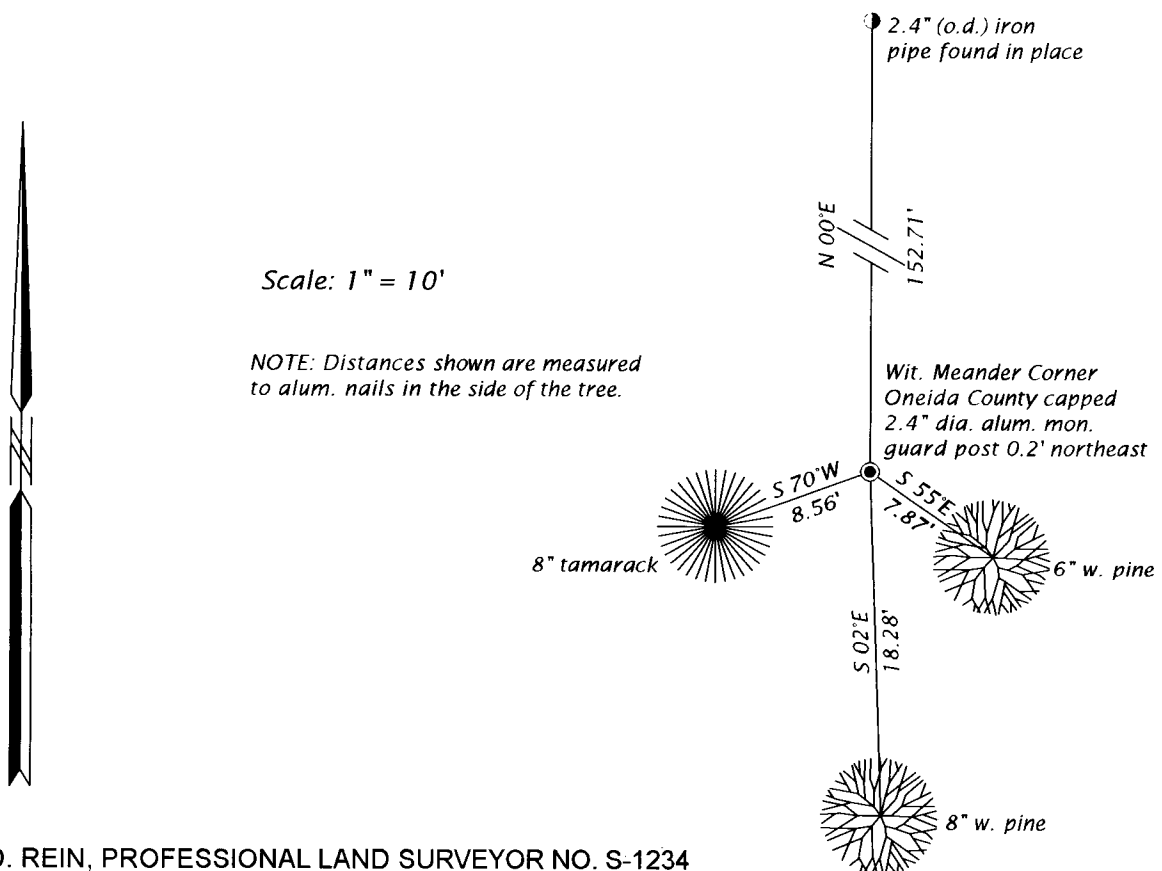
SEE PREVIOUS U.S.P.L.S. MONUMENT RECORD DATED JUNE 13, 1990.

(f)(g)(h) DESCRIPTION OF MONUMENT FOUND AT THIS CORNER AND IF IT WAS ACCEPTED, STATE ALL EVIDENCE (MATERIAL, TESTIMONIAL, OCCUPATIONAL, PLATS, RECORD, OTHER MONUMENTS) USED AS A BASIS FOR ESTABLISHING LOCATION. IF NOT ACCEPTED OR IF NOTHING WAS FOUND, STATE EVIDENCE USED AS BASIS FOR ESTABLISHING LOCATION. IF REESTABLISHED THROUGH LOST CORNER PROPORTIONATE METHODS, INDICATE ALL MONUMENTS, DISTANCES AND DIRECTIONS USED TO ESTABLISH. INDICATE TYPE OF MONUMENT AND SIGN POST FOUND OR SET.

This is a perpetuation of a previous U.S.P.L.S. Monument Record by Charles E. Winkler, RLS, dated June 13, 1990, and filed in the office of the Oneida County Register of Deeds. A complete history of the corner can be found on the previous monument record. I accept the previous location as a true and faithful perpetuation or reestablishment of the original corner location and further perpetuate it as follows.

October 18, 2017. James D. Rein, PLS No. S-1234, found and accepted the Oneida County capped aluminum monument set by Winkler in 1990. Several of Winkler's witness trees are now gone or dead - see below for updated witnesses.

(c)(d)(e) PLAN VIEW OF CORNER WITH TIES TO AT LEAST 4 WITNESS MONUMENTS. IF IN DISAGREEMENT WITH PREVIOUSLY ESTABLISHED CORNER, SHOW THE DISTANCE BETWEEN THE TWO CORNERS AND ALSO INDICATE THE TIES TO THE DISPUTED CORNER.



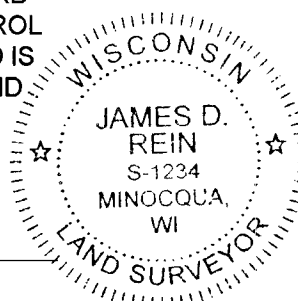
Scale: 1" = 10'

NOTE: Distances shown are measured to alum. nails in the side of the tree.

(i) I, JAMES D. REIN, PROFESSIONAL LAND SURVEYOR NO. S-1234 HEREBY CERTIFY THAT THE CORNER LOCATION ON THIS RECORD WAS DETERMINED BY ME OR UNDER MY DIRECTION AND CONTROL AND THAT THIS U.S. PUBLIC LAND SURVEY MONUMENT RECORD IS CORRECT AND COMPLETE TO THE BEST OF MY KNOWLEDGE AND BELIEF.

[Handwritten Signature]

12-05-17
DATE



INDEX NO. **F-17**
3906102800