

State of Wisconsin

County of ONEIDA } ss.

I David W. Dione, do hereby certify that on the 23rd day of August, 1984, I found evidence of the MEASURER corner ~~at~~ common to Sections 11 & 14 Township 39, North, Range 6 East, Fourth Principal Meridian, as described hereon; and that from this evidence I established a new monument and accessories as described hereon to perpetuate the original location of this corner.

Resident witnesses:

TERRY GARDING

U. S. Public Land Survey Monument Record

Index No. J-20

History of original corner establishment:

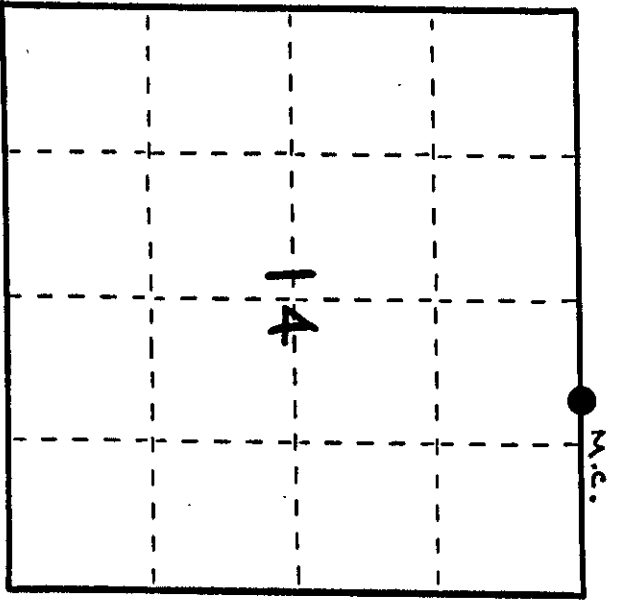
Original corner was established in the course of the Subdivision of T 39N, R 6E, which commenced Oct. 15, 1863 and was completed Oct. 23, 1863 by ALEXANDER ANDERSON, Deputy Surveyor. Original Bearing trees: Birch S¹ N 40° W, 25 1/2". " Birch T¹ S 53° W, 28 1/2".

Description of corner evidence found:

Found 1 1/2" dia. iron pipe near the westerly shore of MINNOCQUA LAKE.

Description of monument and accessories I established to perpetuate the original location of this corner.

See sketch on reverse.



● = Corner monument restored.

Dated at _____, Wis., this _____ day of _____, 19____.

Signature _____ Title Oneida County Surveyor Registration No. _____
(County Surveyor, Registered Land Surveyor, or other duly authorized official)

Office of Register of Deeds, County of _____
Instrument was filed in this office for record on the _____ day of _____, 19____
at _____ o'clock _____ M. I hereby certify that the within

By David W. Dione (Register of Deeds) Deputy

3906110016

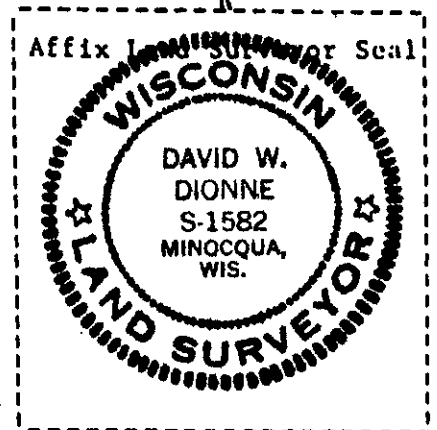
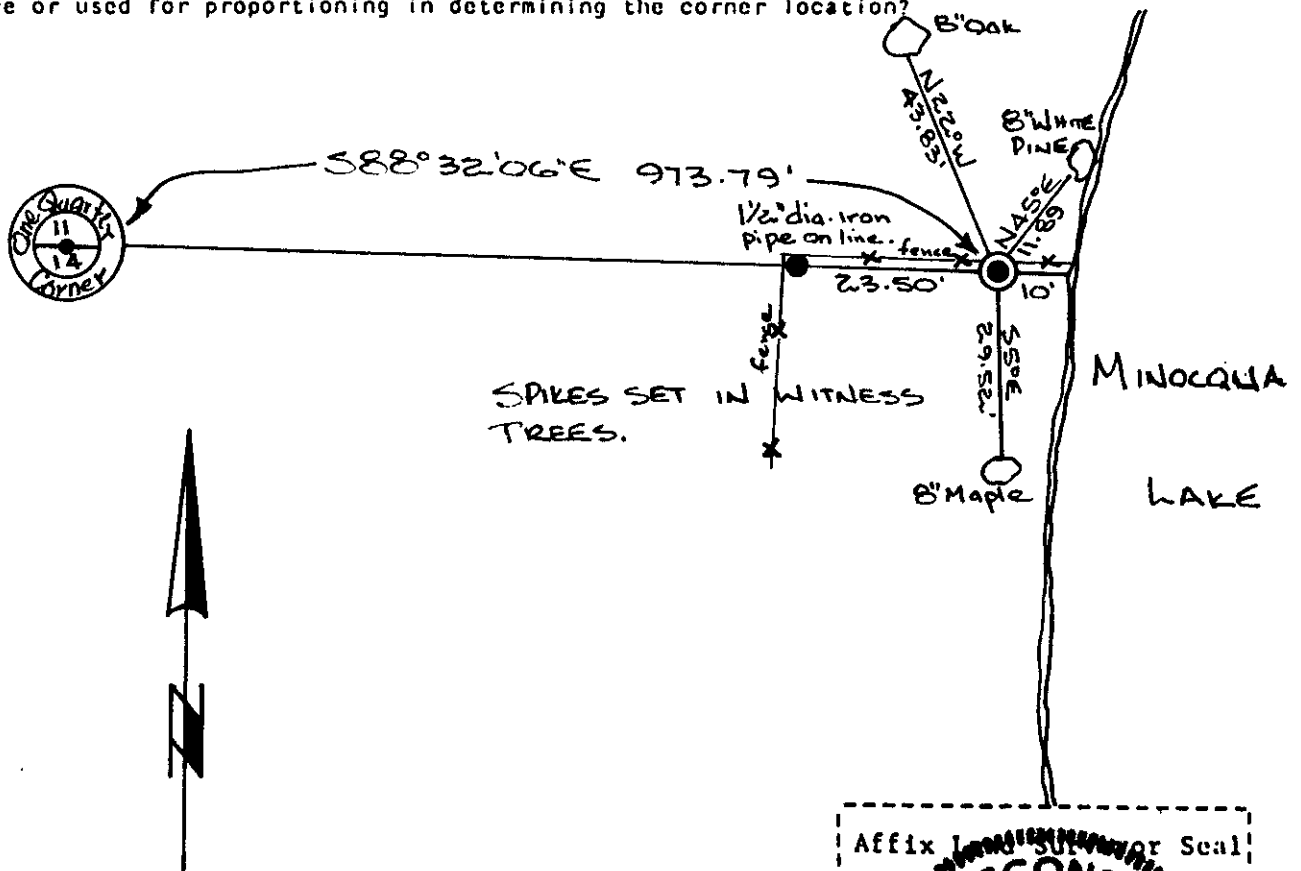
Describe any material discrepancy between the location of the corner as restored or reestablished and the location of that corner as previously restored or reestablished by distance and direction. Show the discrepancy on the plan view drawing under (d), above. Show the distances between the corner as previously restored or reestablished and (1) the corner as restored or reestablished, and (2) to at least 2 of the witness monuments shown on the drawing in (d), above.

See sketch below.

Was the corner restored through acceptance of (1) an obliterated evidence location, or, (2) a found perpetuated location?

A found perpetuated location.

Was the corner reestablished through lost corner proportionate methods? If so, show the method, including the directions and distances to other public land survey corners used as evidence or used for proportioning in determining the corner location?



I, DAVID W. DIONNE

(type or print name) certify that the corner location shown on this record was determined by me or under my direction and control and that this U.S. Public Land Survey Monument Record is correct and complete to the best of my knowledge and belief.

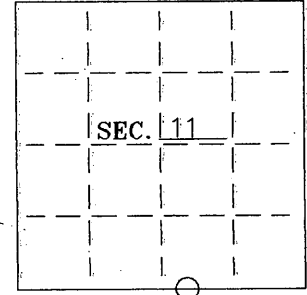
David W. Dionne
Signature

1/4/85
Date

U. S. PUBLIC LAND SURVEY MONUMENT RECORD

Note: This form is intended and designed to fulfill all requirements of Wisconsin Administrative Code-Chapter A-E 7.08 U. S. Public Land Survey Monument Record (3)(a)(b)(c)(d)(e)(f)(g)(h)(i). An additional sheet may be added if necessary to conform with said requirements.

(a) CORNER LOCATION: State Plane Coordinates
 MC S LINE corner of Sec. 11 X _____
 Township 39 North Y _____
 Range 6 East Datum Base _____
 Town/City Minocqua County of Oneida



(b) HISTORY OF ORIGINAL CORNER ESTABLISHMENT:
 Original Surveyor: Alexander Anderson
 Date of Survey: Commenced Oct 15, 1863
 Completed Oct 23, 1863

Original B.T.'S
 Birch 5" N40°W 25 Lks
 Birch 7" S53°W 28 Lks

(b)(f)(g)(h) Description of monument found at this corner and if it was accepted—state all evidence (material—testimonial—occupation—plats—records—other monuments) used as a basis for accepting. If not accepted or if nothing was found state evidence used as basis for establishing location. If reestablished through lost corner proportionate methods indicate all monuments—distances and directions used to establish. Indicate type of monument and sign post found or set.

October 25, 1995

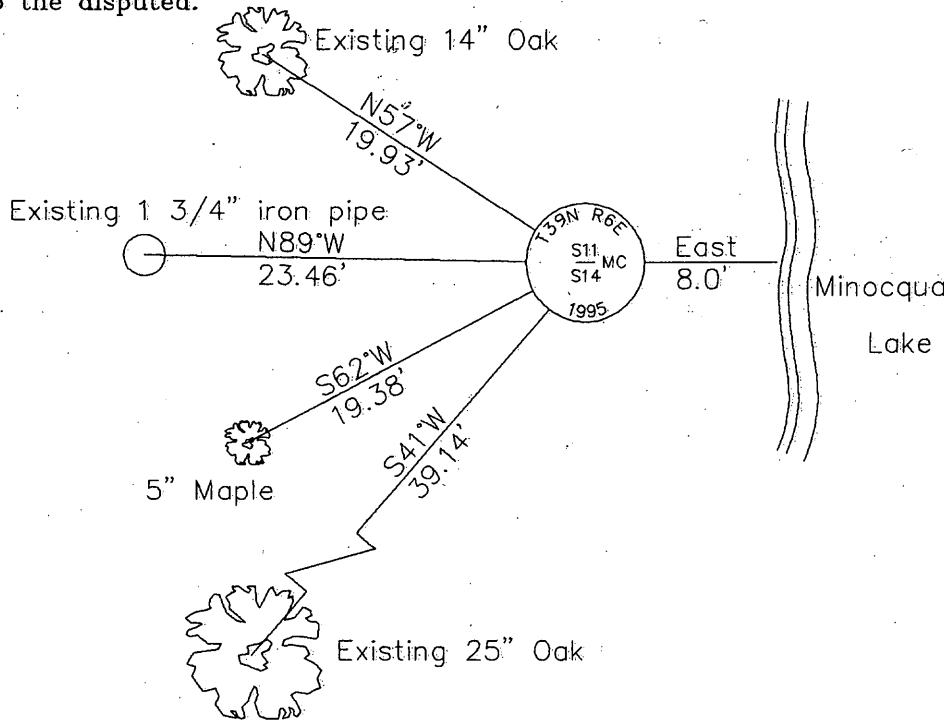
Found 1-3/4" iron pipe on east-west wire fence line. Pipe and two bearing trees found are referenced on a Fisher, Inman, Foltz certified survey dated Aug 24, 1977 and on a Northwoods Surveyors railroad right-of-way map dated Nov. 1973. Also recovered a referenced 1-3/4" iron pipe west 23.46'.

Bearing trees listed on 1973 and 1977 maps are as follows: 4" Oak N60°W 19.2' and 14" Oak S35°W 37.5'.

Accepted existing monument and location.

Set 2-1/2" dia by 30" long, aluminum capped Oneida County Monument.
 Set plastic sign post 1' northeast.

(c)(d)(e) Plan view of corner with ties to at least 4 witness monuments. If in disagreement with previously established corner—show the distances between the two corners and also indicate the ties to the disputed.

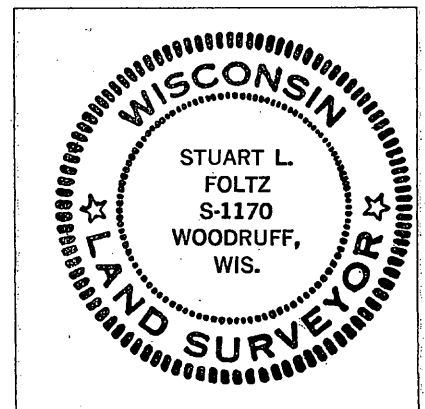


Set 16d galvanized nails in side of bearing trees.

Placed survey marker plaques on front of bearing trees.

The new bearing tree is not blazed.

(i) I Stuart L. Foltz
 hereby certify that the corner location on this record was determined by me or under my direction and control and that this U.S. Public Land Survey Monument Record is correct and complete to the best of my knowledge and belief.



INDEX NO. J-19-20

Stuart L. Foltz
 Signature

12-20-95
 Date

3906110016

