

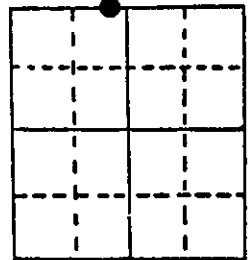
U.S. PUBLIC LAND SURVEY MONUMENT RECORD

Note: This form is intended and designed to fulfill all requirements of Wisconsin Administrative Code, Chapter A-E 5.02, U.S. Public Land Survey Monument Record (3) (a) (b) (c) (d) (e) (f) (g) (h) (i). An additional sheet may be added if necessary to conform with said requirements.

(a) Corner location: Township 39 North
 Range 6 East

Town Minocqua
 County Oneida

West Meander
 Corner on North
 line of Section
 14

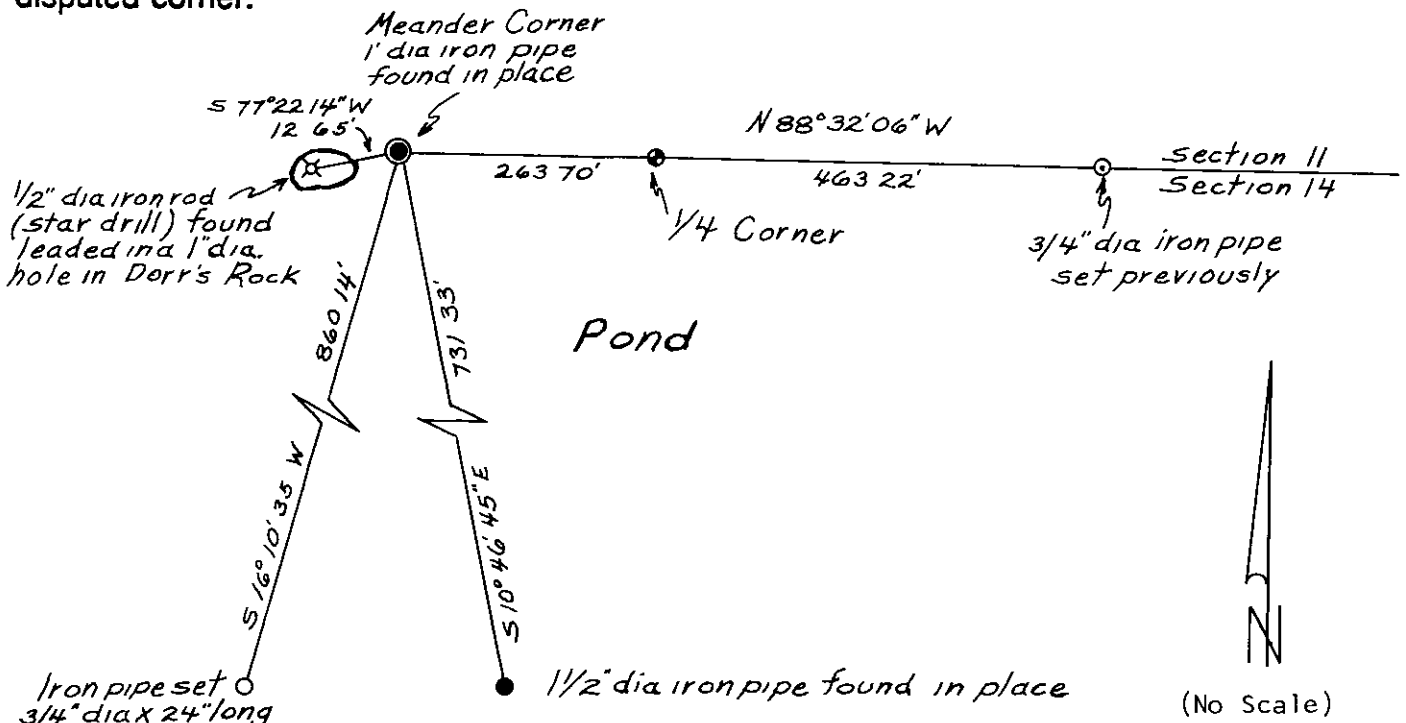


Section 14

(b) (f) (g) (h) Description of monument found at this corner and if it was accepted, state all evidence (material, testimonial, occupational, plats, records, other monuments) used as a basis for accepting. If not accepted or if nothing was found, state evidence used as basis for establishing location. If reestablished through lost corner proportionate methods, indicate all monuments, distances and directions used to establish.

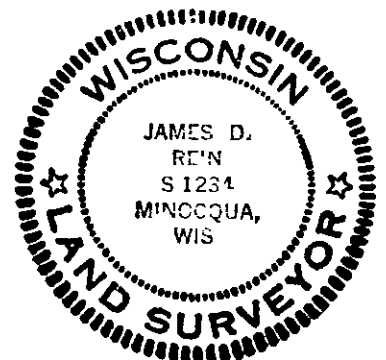
Oct. 1863-Alexander Anderson, Deputy Surveyor, Set Meander Corner.
 Original B.T.s - Tamarack 5" N11°E, 82 links; Tamarack 5" N30-1/2°E, 53 links.
 1903-B. F. Dorr, Oneida County Surveyor - At Meander Corner west of S 1/4 Post (in Sec. 11) found N E. stump. 1-1/2" hole in East side of big rock bears S78°W, 19-1/4 links.
 March 8 & 9 1946- E. F. Kowalke, Surveyor (Book 3, page 74) Meander Corner marked by a 1" iron pipe. Drilled hole in Dorr's Rock deeper. Inserted 5/8" steel rock drill and filled hole with molten lead. S75°W, 12.7 feet.
 March 1, 1985- James D. Rein, Reg. Land Surveyor, Found 1" diameter iron pipe 6" below ice of pond, water level down two feet. A 1/2" diameter x 8" long star drill leaded in Dorr's Rock bears S77°-22'-14"W, 12.65 feet. Meander corner is located N88°-32'-06"W, 263.70 feet from the one-quarter corner between Sections 11 and 14.

(c) (d) (e) Plan view of corner with ties to at least 4 witness monuments. If in disagreement with previously established corner, show the distances between the two corners and also indicate the ties to the disputed corner.



(i) I, JAMES D. REIN, Reg. Land Surveyor No. S-1234
 (type or print name) certify that the corner location on this record was determined by me or under my direction and control and that this U.S. Public Land Survey Monument Record is correct and complete to the best of my knowledge and belief.

James D. Rein April 15th, 1985
 Signature Date



3906110026

Index No. 3-18-14

MAR 20 2017

U.S. PUBLIC LAND SURVEY MONUMENT RECORD

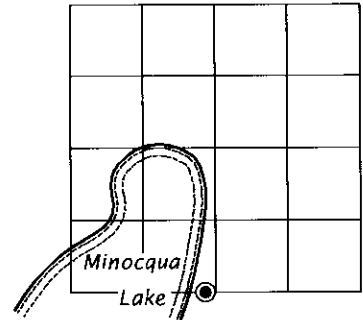
Note: This form is intended and designed to fulfill all requirements of the Wisconsin Administrative Code, Chapter A-E 7.08 U.S. Public Land Monument Record (3)(a)(b)(c)(d)(e)(f)(g)(h)(i). An additional sheet may be added if necessary to conform with said requirements.

AT O'CLOCK M
KYLE J. FRANSON
REGISTER OF DEEDS

(a) CORNER LOCATION:	COORDINATES
W. Meander Corner S. line of Section 11	North: 251266.398
Township 39 North	East: 189093.629
Range 6 East	Projection: WISCORS - Oneida
Town of Minocqua	Datum: NAD 1983(2011)
County of Oneida	Method: RTK direct

(RECORDING AREA)

SECTION 11



(b) HISTORY OF ORIGINAL CORNER ESTABLISHMENT

Original Surveyor: Alexander Anderson
 Date of Survey: Commenced October 13, 1863
 Completed October 23, 1863
 Original B.T.'S: Tamarack 5" N 11°E, 82 lks.
 Tamarack 5" N 30-1/2°E, 53 lks.

(f)(g)(h) DESCRIPTION OF MONUMENT FOUND AT THIS CORNER AND IF IT WAS ACCEPTED, STATE ALL EVIDENCE (MATERIAL, TESTIMONIAL, OCCUPATIONAL, PLATS, RECORDS, OTHER MONUMENTS) USED AS A BASIS FOR ESTABLISHING LOCATION. IF NOT ACCEPTED OR IF NOTHING WAS FOUND, STATE EVIDENCE USED AS BASIS FOR ESTABLISHING LOCATION. IF REESTABLISHED THROUGH LOST CORNER PROPORTIONATE METHODS, INDICATE ALL MONUMENTS, DISTANCES AND DIRECTIONS USED TO ESTABLISH. INDICATE TYPE OF MONUMENT AND SIGN POST FOUND OR SET.

March 25, 1903 - B. F. Dorr, County Surveyor, Old Field Book 4A, page 144; Old Field Book 11, pages 10 and 11, and on page 228 of Dorr's and Vaughan's big book - At M.C. W. of S 1/4 P, found N.E. stump, 1 1/2" hole in Big Rock bears S78°W, 19 1/4 links. (note records differ either 19 1/4 links, or 9 1/4 links to hole in rock)

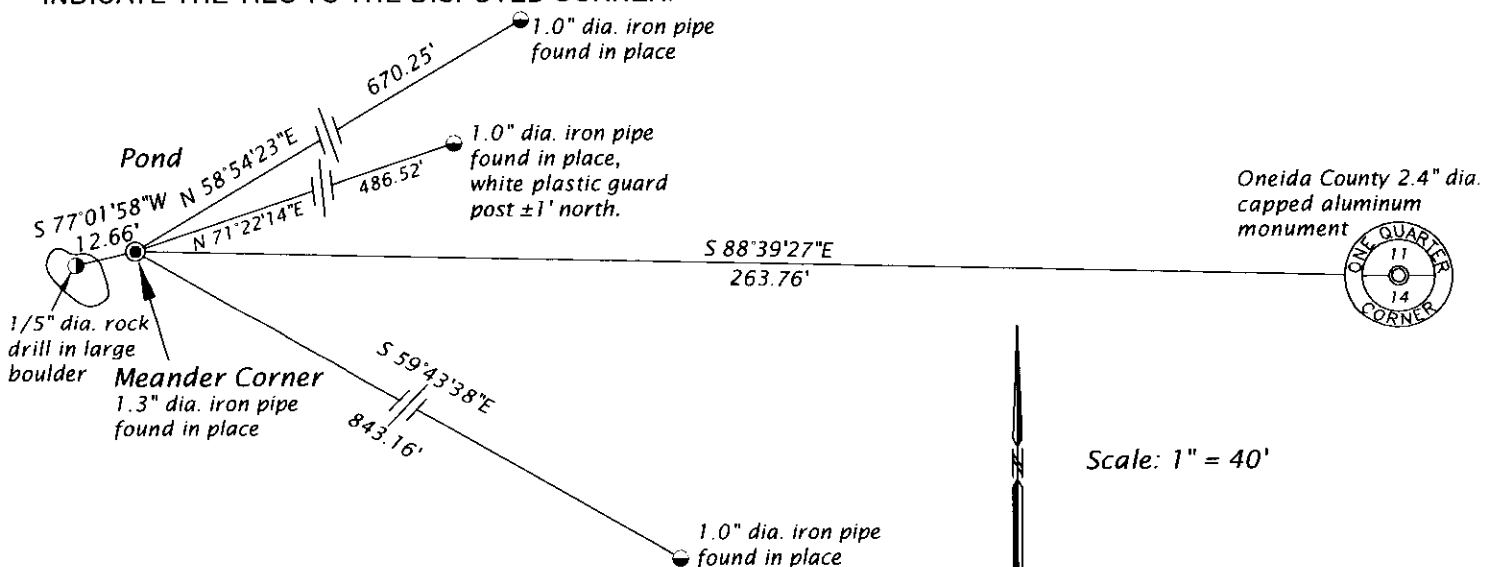
November 15, 1922 - D. S. Burnett, C.E., map filed as C2248 - describes corner as monumented by "stake in lake" witnessed by Dorr's Rock N76°E, 19 1/4 links to stake.

January 1945 - E. F. Kowalke, Field Book 2, page - M.C. set N78°E 9 1/4 links from 1" hole drilled in big rock by B. F. Dorr 1903; did not set permanent M.C. because of rock (Since this was done it was discovered that distance 9 1/4 links should be 19 1/4 links)

March 8 & 9, 1946 - E. F. Kowalke - assisted by Walter Hennig, Field Book 3, page 74 - Drilled hole in Dorr's Rock deeper, Inserted 5/8" steel rock drill and filled with molten lead.

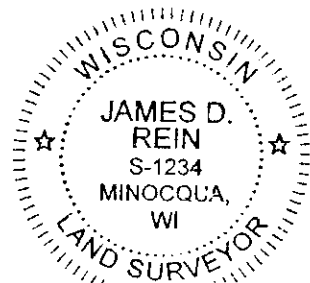
September 25, 1946 - E. F. Kowalke - Field Book 4, page 60 - describes M.C. bearing N 75°20'E, 12.7 feet from Dorr's Rock. (Continued on reverse side)

(c)(d)(e) PLAN VIEW OF CORNER WITH TIES TO AT LEAST 4 WITNESS MONUMENTS. IF IN DISAGREEMENT WITH PREVIOUSLY ESTABLISHED CORNER, SHOW THE DISTANCE BETWEEN THE TWO CORNERS AND ALSO INDICATE THE TIES TO THE DISPUTED CORNER.



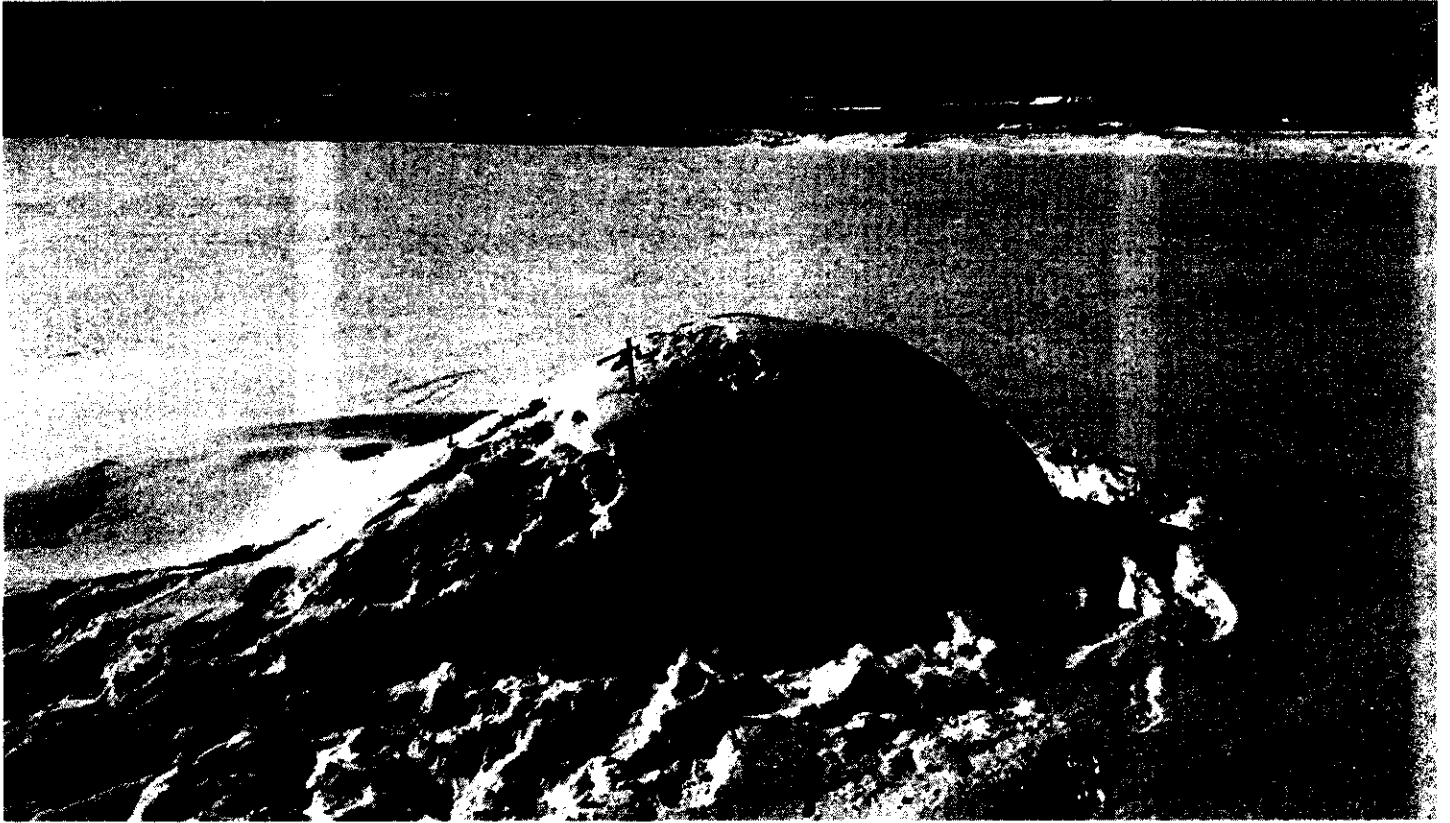
(i) I, JAMES D. REIN, PROFESSIONAL LAND SURVEYOR NO. S-1234 HEREBY CERTIFY THAT THE CORNER LOCATION ON THIS RECORD WAS DETERMINED BY ME OR UNDER MY DIRECTION AND CONTROL AND THAT THIS U.S. PUBLIC LAND SURVEY MONUMENT RECORD IS CORRECT AND COMPLETE TO THE BEST OF MY KNOWLEDGE AND BELIEF.

James D. Rein
 SIGNATURE 3-09-17
DATE



3906110023

INDEX NO. J 18-19



Continued from reverse:

April 15, 1985 - James D. Rein, RLS #1234 - Map No. 86-06, filed as B1449 - recovered 1" I.D. iron pipe in pond, 6" below water level, referenced by a ½" dia. iron rod leaded in a 1" dia. hole in Dorr's Rock bearing S 77°22'14"W, 12.65 feet.

February 9, 2017 - James D. Rein, PLS #1234 - Recovered 1.3" O.D. iron pipe in pond, 18" below present water level, which I accept as a perpetuation of the corner position. Referenced by a ½" diameter iron rod leaded in Dorr's Rock. See plan view for reference ties to the corner monument, which was not replaced because it is in stable condition. No sign post was set for aesthetic purposes.