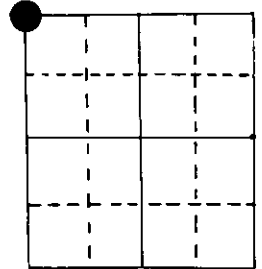


# U.S. PUBLIC LAND SURVEY MONUMENT RECORD

Note: This form is intended and designed to fulfill all requirements of Wisconsin Administrative Code, Chapter A-E 5.02, U.S. Public Land Survey Monument Record (3) (a) (b) (c) (d) (e) (f) (g) (h) (i). An additional sheet may be added if necessary to conform with said requirements.

(a) Corner location: Township 39 North  
 Range 7 East ~~10~~

Town ~~Oneida~~ of Woodruff  
 County Oneida



NW cor Section 18

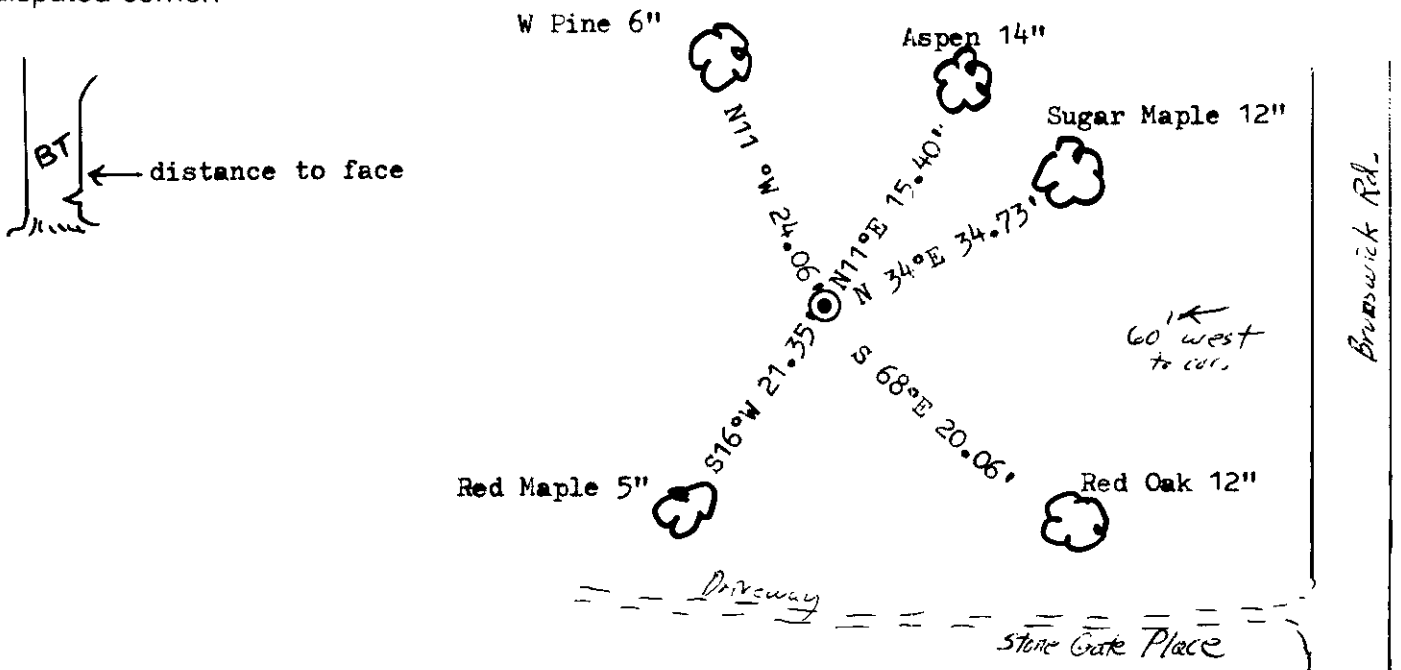
2" iron pipe with WCD brass cap

(b) (f) (g) (h) Description of monument found at this corner and if it was accepted, state all evidence (material, testimonial, occupational, plats, records, other monuments) used as a basis for accepting. If not accepted or if nothing was found, state evidence used as basis for establishing location. If reestablished through lost corner proportionate methods, indicate all monuments, distances and directions used to establish.

Original alex Anderson Sept 1860. OBT'S PY 20" N 50°W 44 lks, PY 24" S 58°E 102 lks  
 PW 16" S 67°W 81 lks, PY 16" N 4°E 130 lks

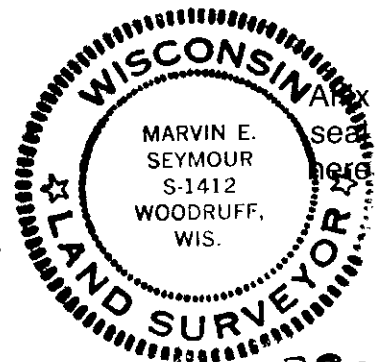
I found on 3/9/82 a W.C.D. brass cap that has been accepted previously.  
 BT's found PW 6" N 11°W 24.06', Asp 14" N 11°E 15.40'  
 Made three new BT's

(c) (d) (e) Plan view of corner with ties to at least 4 witness monuments. If in disagreement with previously established corner, show the distances between the two corners and also indicate the ties to the disputed corner.



(i) I, Marvin E. Seymour  
 (type or print name) certify that the corner location on this record was determined by me or under my direction and control and that this U.S. Public Land Survey Monument Record is correct and complete to the best of my knowledge and belief.

Marvin E. Seymour April 16, 1984  
 Signature Date



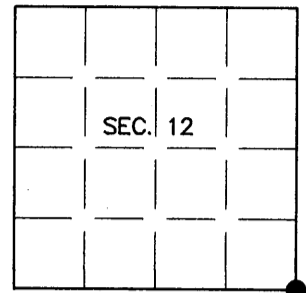
390 612 0000

5-1

# U.S. PUBLIC LAND SURVEY MONUMENT RECORD

Note: This form is intended and designed to fulfill all requirements of Wisconsin Administrative Code, Chapter A-E 7.08 U.S. Public Land Survey Monument Record (3)(a)(b)(c)(d)(e)(f)(g)(h)(i). An additional sheet may be added if necessary to conform with said requirements.

(a) CORNER LOCATION: Plane Coordinates  
 Cor. of Secs. 7, 12, 13 & 18 X:  
 Township 39 North Y:  
 Range 6 & 7 East of the 4th P.M. Datum:  
 Town of Minocqua County of Oneida



(b) HISTORY OF ORIGINAL CORNER ESTABLISHMENT

Original Surveyor: Alfred Millard  
 Date of Survey: Commenced Sept., 1860  
 Completed Sept., 1860

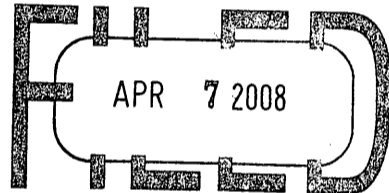
Original Accessories:  
 Y. Pine 20" N50°W, 44 lks.  
 Y. Pine 24" S58°E, 102 lks.  
 W. Pine 16" S67°W, 81 lks.  
 Y. Pine 16" N4°E, 130 lks.

(b)(f)(g)(h) Description of monument found at this corner and if it was accepted, state all evidence (material, testimonial, occupational, plats, records, other monuments) used as a basis for accepting. If not accepted or if nothing was found, state evidence used as basis for establishing location. If re-established through lost corner proportionate methods, indicate all monuments, distances and directions used to establish. Indicate type of monument and sign post found or set.

16 April 1984: USPLS Monument Record by Marvin E. Seymour, RLS. Brass cap pipe and bearing trees: white pine 6" N11°W, 24.06'; aspen 14" N11°E, 15.40'; sugar maple 12" N34°E, 34.73'; red oak 12" S68°E, 20.06' and red maple 5" S16°W, 21.35'.

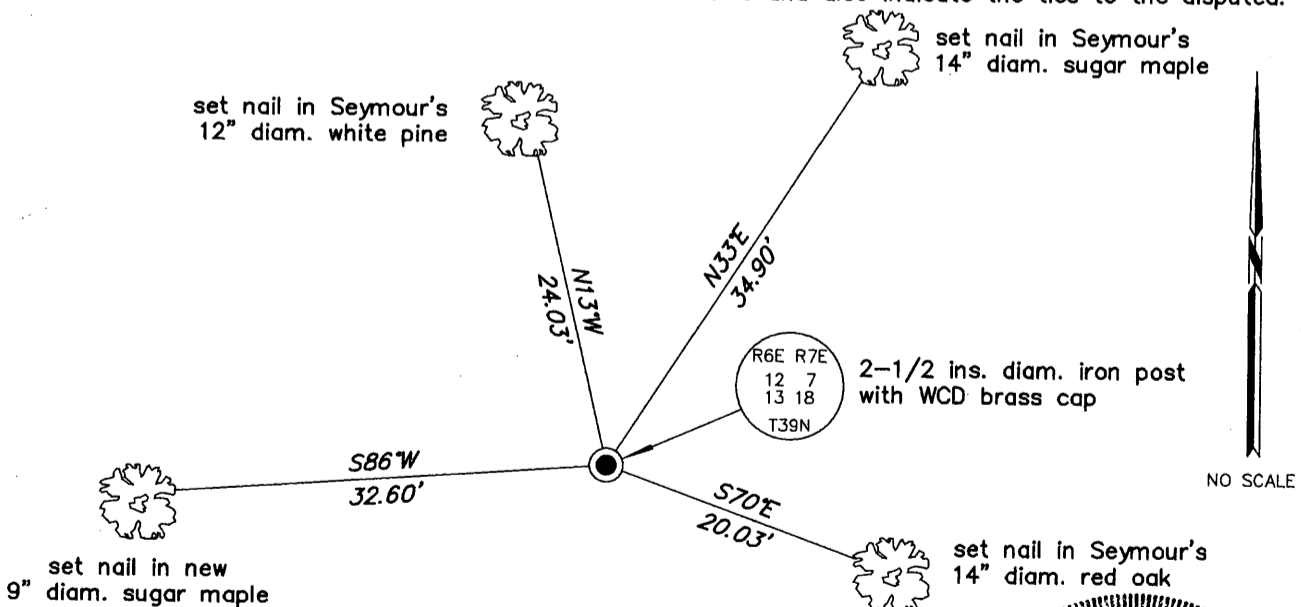
21 July 2007: I found and accepted a 2-1/2 ins. diam. iron post with WCD brass cap projecting 24 ins. above the ground. I found the stumps of all of the GLO trees: red pine stump 16" N4°E, 87.0'; red pine stump S59°E, 65.5'; white pine stump S70°W, 53.0' and red pine stump 22" N47°W, 30.1'. I also found Seymour's aspen and red maple, now stumps. I found or established accessories as shown below and found a white plastic sign post bearing North, 1-1/2 ft. dist.

REGISTER OF DEEDS OFFICE  
 ONEIDA COUNTY, WIS.

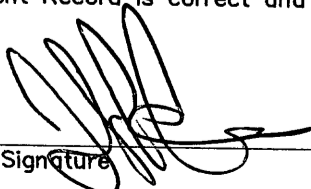


At \_\_\_\_\_ O'Clock \_\_\_\_\_ M  
**THOMAS H. LEIGHTON**  
 REGISTER OF DEEDS

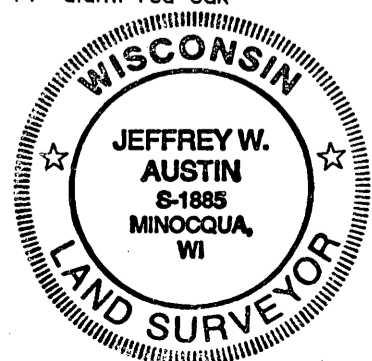
(c)(d)(e) Plan view of corner with ties to at least 4 witness monuments. If in disagreement with previously established corner, show the distances between the two corners and also indicate the ties to the disputed.



(i) I, Jeffrey W. Austin, Registered Land Surveyor No. S-1885, hereby certify upon honor that the corner location on this record was determined by me or under my direction and control and that this U.S. Public Land Survey Monument Record is correct and complete to the best of my knowledge and belief.

  
 Signature

MAR. 7, 2008  
 Date



INDEX NO. J-25 (3906120000)