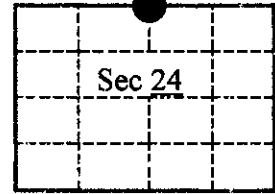


U. S. PUBLIC LAND SURVEY MONUMENT RECORD

Note: This form is intended and designed to fulfill all requirements of Wisconsin Administrative Code, Chapter A-E 7.08 U.S. Land Survey Monument Record (3)(a)(b)(c)(d)(e)(f)(g)(h)(i). An additional sheet may be added if necessary to conform with said requirements.

(a) CORNER LOCATION: State Plane Coordinates
N¼ Corner of Sec. 24 X _____
 Township 39 East Y _____
 Range 6 East Datum Base _____
 Town Minocqua County of Oneida



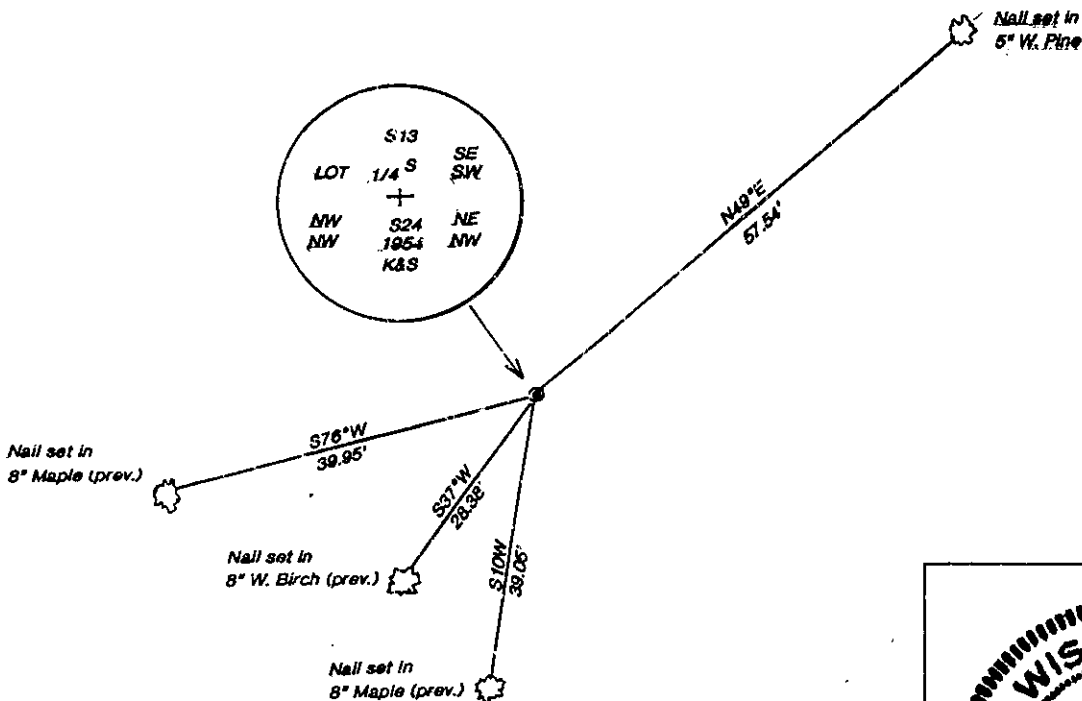
(b) HISTORY OF ORIGINAL CORNER ESTABLISHMENT Original B.T.'s

Original Surveyor: Alex Anderson Birch, 5", N21°E, 22 links
 Date of Survey: Commenced Oct., 1863 Aspen, 5", S36°E, 13 links
 Completed _____

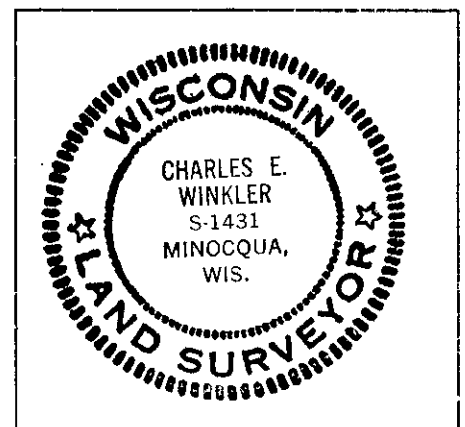
(b)(f)(g)(h) Description of monument found at this corner and if it was accepted, state all evidence (material, testimonial, occupational, plats, records, other monuments) used as a basis for accepting. If not accepted or if nothing was found, state evidence used as basis for establishing location. If reestablished through lost corner proportionate methods, indicate all monuments, distances and directions used to establish. Indicate type of monument and sign post found or set.

- 1942 - Kowalke indicates pipe at corner location on survey map with 4" Birch B.T. S49°E, 40.3'.
- 1955 - Kowalke shows a "marked galvanized iron pipe cap" on survey map with 6" Oak B.T. N15°W, 11.0'. He also indicates a concrete monument at iron pipe location.
- 1979 - Inman-Foltz & Associates shows 2" iron pipe with cap found in place on plat of Cedar Gates with three B.T.'s - 7" Maple, S76°W, 39.7', 5" W. Birch, S37°W, 28.0', 5" Maple, S10°W, 38.4'.
- 1981 - Fisher and Associates shows 2" capped iron pipe found in place on Certified Survey Map recorded in V. 3 CSM, p. 852, with two B.T.'s - 6" W. Birch, S37°W, 26.0', 5" Maple, S10°W, 38.4'.
- 1997 - I found and accepted the 1¾" iron pipe with 2¼" galvanized cap. Also found 3" x 5" concrete monument adjacent and white plastic survey marker post ± 1' north of iron pipe.

(c)(d)(e) Plan view of corner with ties to at least 4 witness monuments. If in disagreement with previously established corner, show the distances between the two corners and also indicate the ties to the disputed.



(i) I, Charles E. Winkler S-1431 hereby certify that the corner location on this record was determined by me or under my direction and control and that this U.S. Public Land Survey Monument Record is correct and complete to the best of my knowledge and belief.



Index No.

Charles E. Winkler 12/29/98
 Signature Foltz & Associates, Inc. Date

3906130020 N-23

U.S. PUBLIC LAND SURVEY MONUMENT RECORD

Note: This form is intended and designed to fulfill all requirements of the Wisconsin Administrative Code, Chapter A-E 7.08 U.S. Public Land Monument Record (3)(a)(b)(c)(d)(e)(f)(g)(h)(i). An additional sheet may be added if necessary to conform with said requirements.

REGISTER OF DEEDS OFFICE
ONEIDA COUNTY
FILED

AUG 28 2017

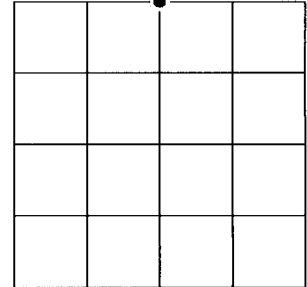
(a) CORNER LOCATION:
North Quarter Corner of Section 24
Township 39 North
Range 6 East
Town of Minocqua
County of Oneida

North:
East:
Datum:
GNSS Method:
GNSS Control:

AT _____ O'CLOCK _____ M
KYLE J. FRANSON
REGISTER OF DEEDS

(RECORDING AREA)

SECTION 24



(b) HISTORY OF ORIGINAL CORNER ESTABLISHMENT

Original Surveyor:
Date of Survey: Commenced _____
Completed _____
Original B.T.'S _____

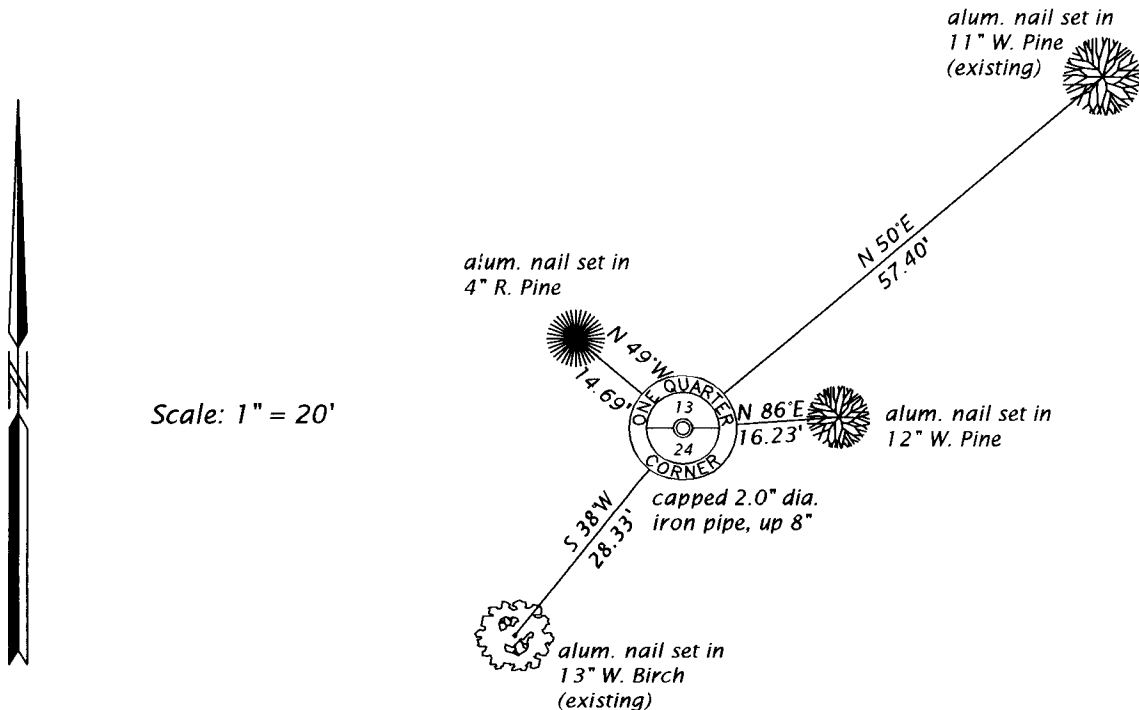
**SEE PREVIOUS U.S.P.L.S. MONUMENT
RECORD DATED 12/29/98.**

(f)(g)(h) DESCRIPTION OF MONUMENT FOUND AT THIS CORNER AND IF IT WAS ACCEPTED, STATE ALL EVIDENCE (MATERIAL, TESTIMONIAL, OCCUPATIONAL, PLATS, RECORD, OTHER MONUMENTS) USED AS A BASIS FOR ESTABLISHING LOCATION. IF NOT ACCEPTED OR IF NOTHING WAS FOUND, STATE EVIDENCE USED AS BASIS FOR ESTABLISHING LOCATION. IF REESTABLISHED THROUGH LOST CORNER PROPORTIONATE METHODS, INDICATE ALL MONUMENTS, DISTANCES AND DIRECTIONS USED TO ESTABLISH. INDICATE TYPE OF MONUMENT AND SIGN POST FOUND OR SET.

This is a perpetuation of a previous USPLS Monument Record by Charles E. Winkler, RLS, dated December 29, 1998, and filed in the office of the Oneida County Register of Deeds. A complete history of the corner can be found on the previous monument record. I accept the previous location as a true and faithful perpetuation or reestablishment of the original corner location and further perpetuate it as follows.

June 5, 2017, James D. Rein, PLS #S-1234, found and accepted the capped iron pipe shown on the previous USPLS Monument Record by Winkler. The two southwest Maples are now gone. See below for updated witnesses.

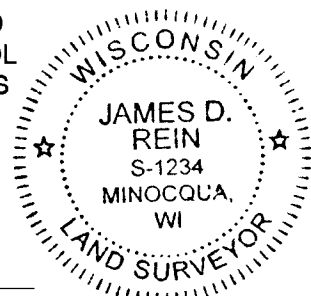
(c)(d)(e) PLAN VIEW OF CORNER WITH TIES TO AT LEAST 4 WITNESS MONUMENTS. IF IN DISAGREEMENT WITH PREVIOUSLY ESTABLISHED CORNER, SHOW THE DISTANCE BETWEEN THE TWO CORNERS AND ALSO INDICATE THE TIES TO THE DISPUTED CORNER.



(i) I, JAMES D. REIN, PROFESSIONAL LAND SURVEYOR NO. S-1234 HEREBY CERTIFY THAT THE CORNER LOCATION ON THIS RECORD WAS DETERMINED BY ME OR UNDER MY DIRECTION AND CONTROL AND THAT THIS U.S. PUBLIC LAND SURVEY MONUMENT RECORD IS CORRECT AND COMPLETE TO THE BEST OF MY KNOWLEDGE AND BELIEF.

[Handwritten Signature]
SIGNATURE

8/02/17
DATE



INDEX NO. N - 23
3906130020