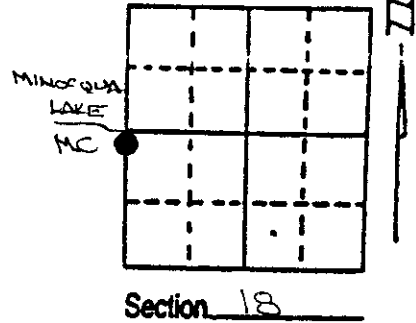


U.S. PUBLIC LAND SURVEY MONUMENT RECORD

Note: This form is intended and designed to fulfill all requirements of Wisconsin Administrative Code, Chapter A-E 7.08 U.S. Public Land Survey Monument Record (3) (a) (b) (c) (d) (e) (f) (g) (h) (i). An additional sheet may be added if necessary to conform with said requirements.

(a) Corner location: Township 39 North
 Range 7 East/West

Town/City/Village WOODRUFF
 County ONEIDA



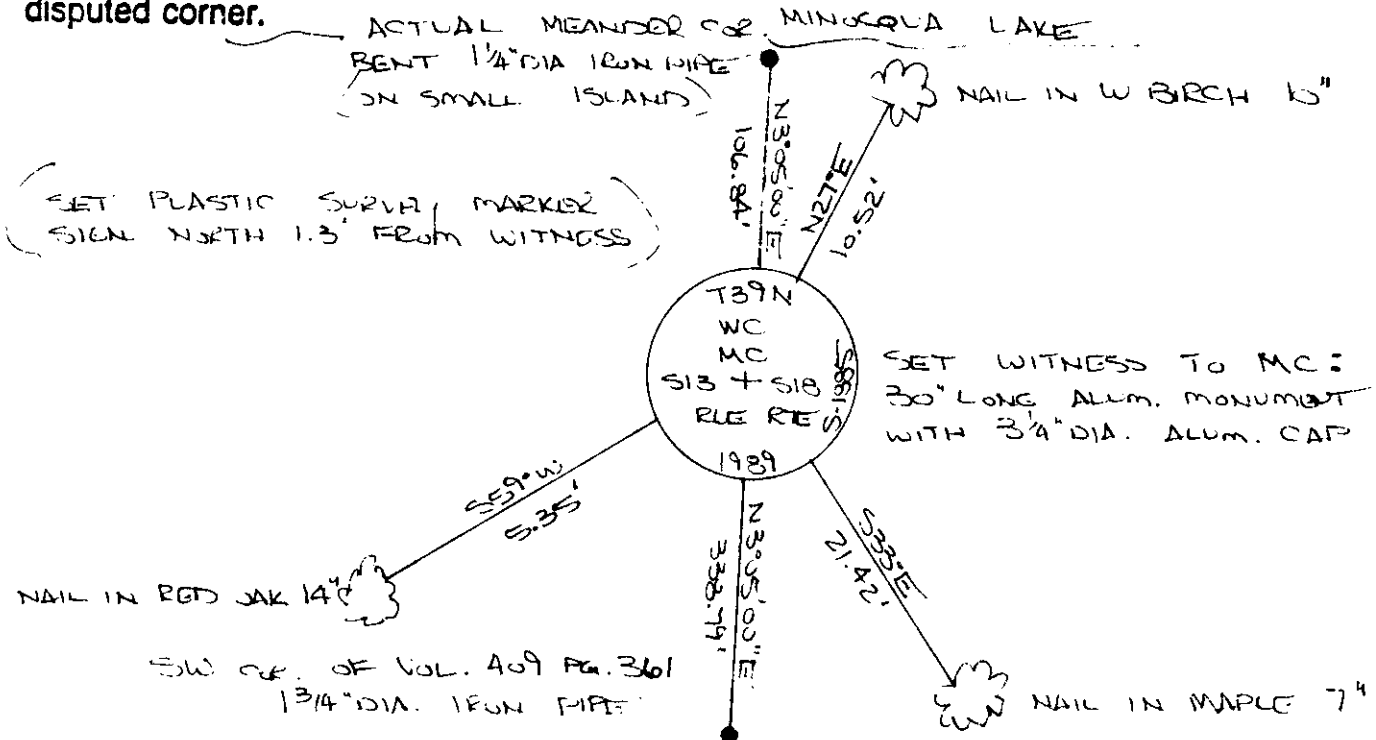
(b) (f) (g) (h) Description of monument found at this corner and if it was accepted, state all evidence (material, testimonial, occupational, plats, records, other monuments) used as a basis for accepting. If not accepted or if nothing was found, state evidence used as basis for establishing location. If reestablished through lost corner proportionate methods, indicate all monuments, distances and directions used to establish. Indicate type of monument found or set and sign post.

September, 1860: Alfred Millard originally set a wood post witnessed by: B.Oak 16' S54W, 43 lks., no other tree near.

August 22, 1977: John Fisher reset this corner reproducing a position previously established by E.F. Kowalke. He set an iron pipe. (map L-194)

July 13, 1989: Jeffrey W. Austin found and accepted a 1-1/4" dia. iron pipe checking with the Fisher survey. The monument location is on a small island and is quite unstable therefore a standard 30" long alum. Oneida Co. monument with a 3-1/4" dia. alum. cap was set as a witness corner in place of one of the pipes on the Fisher survey. Witnesses were established for the witness corner as follows: R.Oak 14' S59W, 5.35', W.Birch 10" N27E, 10.52', Maple 7' S33E, 21.42', plastic survey marker sign North, 1.3'. Distances are to a nail in the side of each tree. A "deep one" magnet was placed beneath the witness corner.

(c) (d) (e) Plan view of corner with ties to at least 4 witness monuments. If in disagreement with previously established corner, show the distances between the two corners and also indicate the ties to the disputed corner.



(i) I, JEFFREY W. AUSTIN S-1885
 (type or print name) certify that the corner location on this record was determined by me or under my direction and control and that this U.S. Public Land Survey Monument Record is correct and complete to the best of my knowledge and belief.

Signature [Handwritten Signature] Date July 17, 1989



Index No. LM-1

3906131900

U.S. PUBLIC LAND SURVEY MONUMENT RECORD

REGISTER OF DEEDS OFFICE
ONEIDA COUNTY
FILED

Note: This form is intended and designed to fulfill all requirements of the Wisconsin Administrative Code, Chapter A-E 7.08 U.S. Public Land Monument Record (3)(a)(b)(c)(d)(e)(f)(g)(h)(i). An additional sheet may be added if necessary to conform with said requirements.

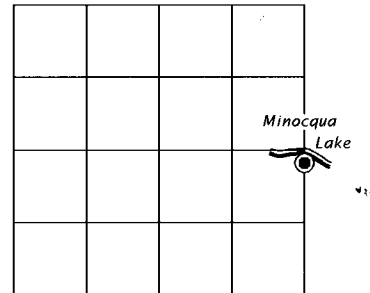
MAR 14 2018

KYLE J. FRANSON
REGISTER OF DEEDS

(a) CORNER LOCATION: WISCRS - Oneida County
 Witness Meander Corner of Section 13 North: 248666.117 US ft
 Township 39 North East: 197065.470 US ft
 Range 6 East Datum: NAD 83 (2011)
 Town of Minocqua GNSS Method: RTK Direct
 County of Oneida GNSS Control: WISCORS VRS

(RECORDING AREA)

SECTION 13



(b) HISTORY OF ORIGINAL CORNER ESTABLISHMENT

Original Surveyor:
 Date of Survey: Commenced
 Completed
 Original B.T.'S

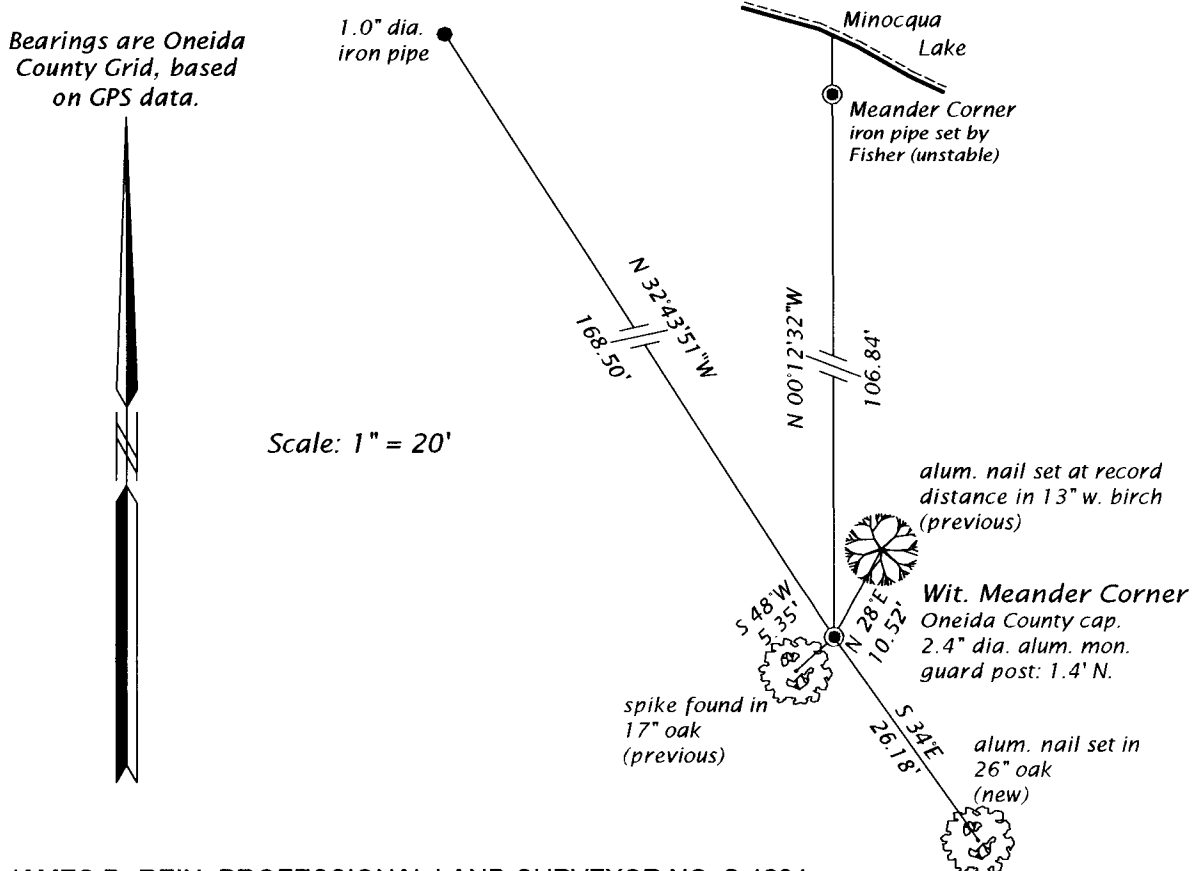
SEE PREVIOUS U.S.P.L.S. MONUMENT
 RECORD DATED JULY 17, 1989.

(f)(g)(h) DESCRIPTION OF MONUMENT FOUND AT THIS CORNER AND IF IT WAS ACCEPTED, STATE ALL EVIDENCE (MATERIAL, TESTIMONIAL, OCCUPATIONAL, PLATS, RECORD, OTHER MONUMENTS) USED AS A BASIS FOR ESTABLISHING LOCATION. IF NOT ACCEPTED OR IF NOTHING WAS FOUND, STATE EVIDENCE USED AS BASIS FOR ESTABLISHING LOCATION. IF REESTABLISHED THROUGH LOST CORNER PROPORTIONATE METHODS, INDICATE ALL MONUMENTS, DISTANCES AND DIRECTIONS USED TO ESTABLISH. INDICATE TYPE OF MONUMENT AND SIGN POST FOUND OR SET.

This is a perpetuation of a previous U.S.P.L.S. Monument Record by Jeffrey W. Austin, RLS, dated July 17, 1989, and filed in the office of the Oneida County Register of Deeds. A complete history of the corner can be found on the previous monument record. I accept the previous location as a true and faithful perpetuation or reestablishment of the original corner location and further perpetuate it as follows.

December 15, 2017, I, James D. Rein, PLS No. S-1234, found and accepted the Oneida County capped aluminum monument set by Austin. Austin's southeasterly maple is now gone - see below for updated witnesses.

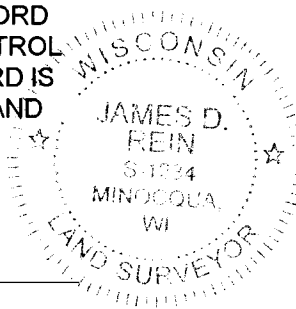
(c)(d)(e) PLAN VIEW OF CORNER WITH TIES TO AT LEAST 4 WITNESS MONUMENTS. IF IN DISAGREEMENT WITH PREVIOUSLY ESTABLISHED CORNER, SHOW THE DISTANCE BETWEEN THE TWO CORNERS AND ALSO INDICATE THE TIES TO THE DISPUTED CORNER.



(i) I, JAMES D. REIN, PROFESSIONAL LAND SURVEYOR NO. S-1234 HEREBY CERTIFY THAT THE CORNER LOCATION ON THIS RECORD WAS DETERMINED BY ME OR UNDER MY DIRECTION AND CONTROL AND THAT THIS U.S. PUBLIC LAND SURVEY MONUMENT RECORD IS CORRECT AND COMPLETE TO THE BEST OF MY KNOWLEDGE AND BELIEF.

[Handwritten Signature]
 SIGNATURE

2-15-18
 DATE



INDEX NO. LM - 25
 3906131900