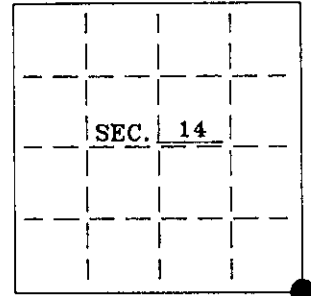


U. S. PUBLIC LAND SURVEY MONUMENT RECORD

Note: This form is intended and designed to fulfill all requirements of Wisconsin Administrative Code-Chapter A-E 7.08 U. S. Public Land Survey Monument Record (3)(a)(b)(c)(d)(e)(f)(g)(h)(i). An additional sheet may be added if necessary to conform with said requirements.

(a) CORNER LOCATION: State Plane Coordinates
SE&MC corner of Sec. 14 X _____
 Township 39 North Y _____
 Range 6 East Datum Base _____
 Town/~~City~~ Minocqua County of Oneida



(b) HISTORY OF ORIGINAL CORNER ESTABLISHMENT:
 Original Surveyor: Alexander Anderson
 Date of Survey: Commenced October 1863
 Completed October 1863

Original B.T.'S
 S.C. Sp.Pine 6" S52W 35 lks.
 Sp.Pine 6" S61E 39 lks.
 M.C. Y.Pine 12" N61E 38 lks.
 Y.Pine 10" S50E 40 lks.

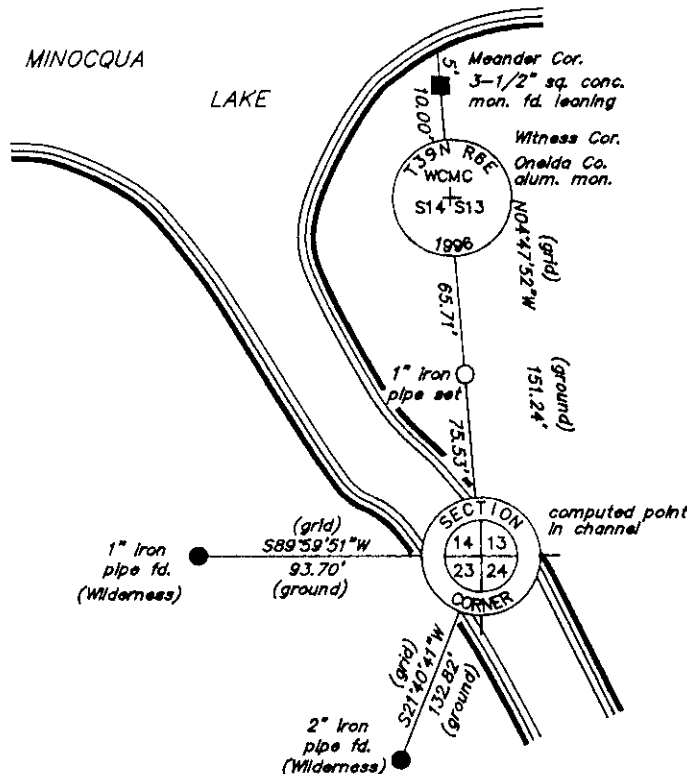
(b)(f)(g)(h) Description of monument found at this corner and if it was accepted—state all evidence (material—testimonial—occupation—plats—records—other monuments) used as a basis for accepting. If not accepted or if nothing was found state evidence used as basis for establishing location. If reestablished through lost corner proportionate methods indicate all monuments—distances and directions used to establish. Indicate type of monument and sign post found or set.

May, 1955: Map by E.F. Kowalke indicates section corner is monumented with a concrete monument and witnessed by a Tamarack 7" N17E, 27'; Tamarack 7" S27E, 47.2' and an Oak 10" N40W, 50.0'. This map also indicates the meander corner bears N126'W, 151 feet from the section corner and is monumented with a concrete monument and witnessed by a W.Pine 21" S35W, 8'; Oak 8" N23E, 13' and a W.Pine 8" S53W, 8'.

March, 1980: Map by Wilderness Surveying, Inc. indicates section corner location is based on Kowalke's work and now falls in the Jerome Lake boat channel.

August 1, 1996: I found and accepted a leaning 3-1/2" sq. concrete monument at the meander corner location witnessed by Kowalke's Oak 10" N23E, 13' and W.Pine 28" S53W, 8 feet. I also recovered two monuments of the Wilderness survey and was able to reposition the section corner that now falls in the boat channel. I established accessories as shown below and set a plastic sign post 1 foot Northeast of the witness corner to the meander corner.

(c)(d)(e) Plan view of corner with ties to at least 4 witness monuments. If in disagreement with previously established corner—show the distances between the two corners and also indicate the ties to the disputed.



Not to Scale
 W Coordinate System
 (North Zone)

REGISTER OF DEEDS OFFICE
 ONEIDA COUNTY, WIS.
FILED
 SEP - 4 1996
 At _____ O'Clock _____ M
 THOMAS H. LEIGHTON
 REGISTER OF DEEDS

WISCONSIN
 CHARLES E. WINKLER
 S-1431
 MINOCQUA, WIS.
 LAND SURVEYOR

(i) I Charles E. Winkler, Registered Land Surveyor
 hereby certify that the corner location on this record was determined by me or under my direction and control and that this U.S. Public Land Survey Monument Record is correct and complete to the best of my knowledge and belief.

Charles E. Winkler 8/19/1996
 Signature Date

INDEX NO. N.M.-21
 N-21

