

U.S. PUBLIC LAND SURVEY MONUMENT RECORD

JUN 01 2017

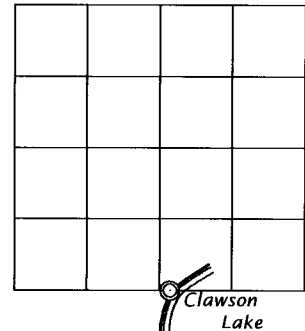
Note: This form is intended and designed to fulfill all requirements of the Wisconsin Administrative Code, Chapter A-E 7.08 U.S. Public Land Monument Record (3)(a)(b)(c)(d)(e)(f)(g)(h)(i). An additional sheet may be added if necessary to conform with said requirements.

AT _____ O'CLOCK _____ M
KYLE J. FRANSON
REGISTER OF DEEDS

(a) CORNER LOCATION: WISCRS - Oneida County
Meander Corner of Section 14
Township 39 North
Range 6 East
Town of Minocqua
County of Oneida
North: 246081.843 USft
East: 189186.565 USft
Latitude: 45° 51' 38.91916" N
Longitude: 89° 42' 16.64428" W
Datum: NAD 83(2011)
GNSS Method: RTK - Offset
GNSS Control: WISCORS VRS
Record North: 246081.962 USft
Record East: 189186.819 USft
Record Datum: NAD 83(1991)

(RECORDING AREA)

SECTION 14



(b) HISTORY OF ORIGINAL CORNER ESTABLISHMENT

Original Surveyor: Alexander Anderson
Date of Survey: Commenced Oct. 13, 1863
Completed Oct. 23, 1863
Original B.T.'S: Corner not set as part of the U.S.P.L.S.

(f)(g)(h) DESCRIPTION OF MONUMENT FOUND AT THIS CORNER AND IF IT WAS ACCEPTED, STATE ALL EVIDENCE (MATERIAL, TESTIMONIAL, OCCUPATIONAL, PLATS, RECORD, OTHER MONUMENTS) USED AS A BASIS FOR ESTABLISHING LOCATION. IF NOT ACCEPTED OR IF NOTHING WAS FOUND, STATE EVIDENCE USED AS BASIS FOR ESTABLISHING LOCATION. IF REESTABLISHED THROUGH LOST CORNER PROPORTIONATE METHODS, INDICATE ALL MONUMENTS, DISTANCES AND DIRECTIONS USED TO ESTABLISH. INDICATE TYPE OF MONUMENT AND SIGN POST FOUND OR SET.

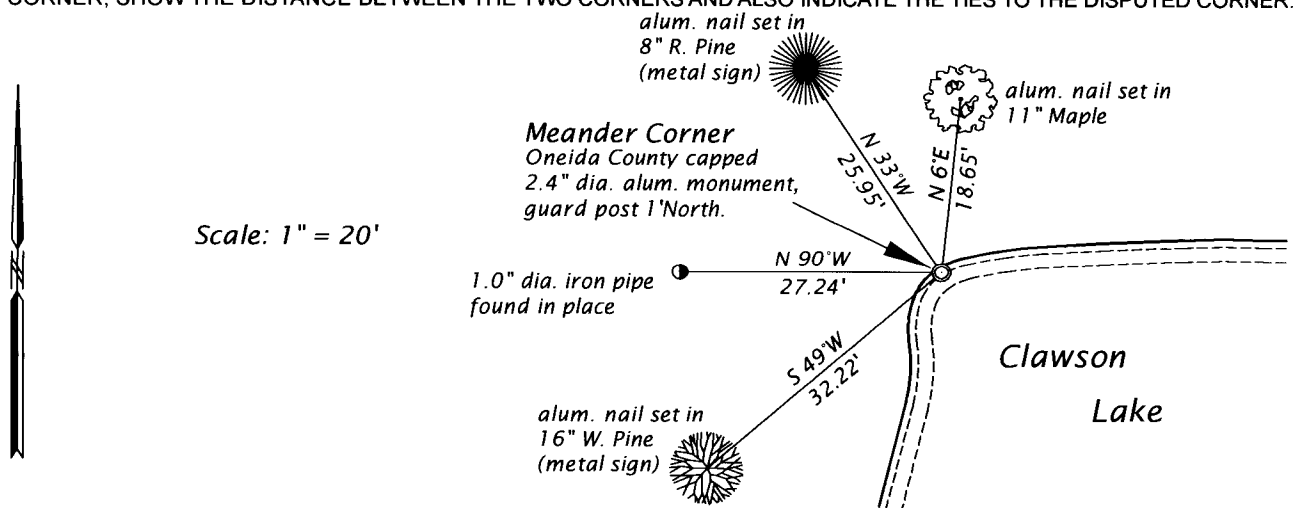
April 30, 1958 - E. F. Kowalke, RLS No. 403, (Kowalke Field Book 18, page 44 and Map 3-B-8, filed A1619 in county surveyor's office) for survey in Section 14, sets a post and iron pipe near the westerly shore of Clawson Lake on line between the 1/4 corner and the 1/8 corner.

August 7, 1991 - Stuart L. Foltz, RLS No. 1170, Inman-Foltz & Assoc., Inc., (Certified Survey Map No. 1448, recorded in Volume 5, Survey Maps, on page 1484 & 1484A) describes meander corner monumented by a 1 3/4" iron pipe found, referenced by a 1" x 24" iron pipe set, bearing N89° 56' 00"W, 24.41 feet.

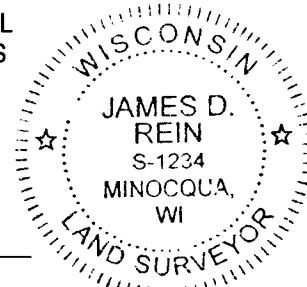
March 24, 2017 - James D. Rein, PLS No. 1234, we recovered a 1 1/2" dia. iron pipe near the westerly shore of Clawson Lake 8" below the existing water level. I accept the existing monument as a good faith effort to mark the section line. We drove an Oneida County capped 2.4" dia. x 60" long aluminum over the iron pipe and made additional reference ties as shown in the plan.

The coordinate value shown has been verified by at least one of the following methods: 1) comparison to a previously GPS determined published value; 2) the value is the average of two or more GPS observations at a markedly different time; 3) one or more distances were measured back to the GPS observed corner from temporary GPS observed offset locations.

(c)(d)(e) PLAN VIEW OF CORNER WITH TIES TO AT LEAST 4 WITNESS MONUMENTS. IF IN DISAGREEMENT WITH PREVIOUSLY ESTABLISHED CORNER, SHOW THE DISTANCE BETWEEN THE TWO CORNERS AND ALSO INDICATE THE TIES TO THE DISPUTED CORNER.



(i) I, JAMES D. REIN, PROFESSIONAL LAND SURVEYOR NO. S-1234 HEREBY CERTIFY THAT THE CORNER LOCATION ON THIS RECORD WAS DETERMINED BY ME OR UNDER MY DIRECTION AND CONTROL AND THAT THIS U.S. PUBLIC LAND SURVEY MONUMENT RECORD IS CORRECT AND COMPLETE TO THE BEST OF MY KNOWLEDGE AND BELIEF.



SIGNATURE *James D. Rein*

DATE 5-24-17

INDEX NO. N - 19-20
3906140019