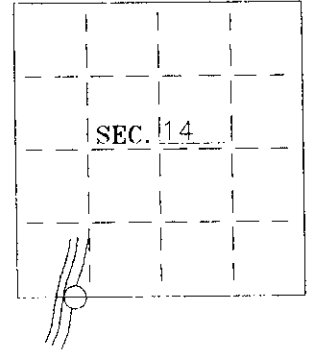


U. S. PUBLIC LAND SURVEY MONUMENT RECORD

Note: This form is intended and designed to fulfill all requirements of Wisconsin Administrative Code-Chapter A-E 7.08 U. S. Public Land Survey Monument Record (3)(a)(b)(c)(d)(e)(f)(g)(h)(i). An additional sheet may be added if necessary to conform with said requirements.

(a) CORNER LOCATION: State Plane Coordinates
 MC S-Line corner of Sec. 14 X _____
 Township _____ 39 _____ North Y _____
 Range _____ 06 _____ East Datum Base _____
 Town/City Minocqua County of Oneida



(b) HISTORY OF ORIGINAL CORNER ESTABLISHMENT:

Original Surveyor: Alexander Anderson
 Date of Survey: Commenced Oct 15, 1863
 Completed Oct 23, 1863

Original B.T.'S

Blk Oak 10" S89°E 56 lks
 Blk Oak 12" N52 1/2°E 75 lks

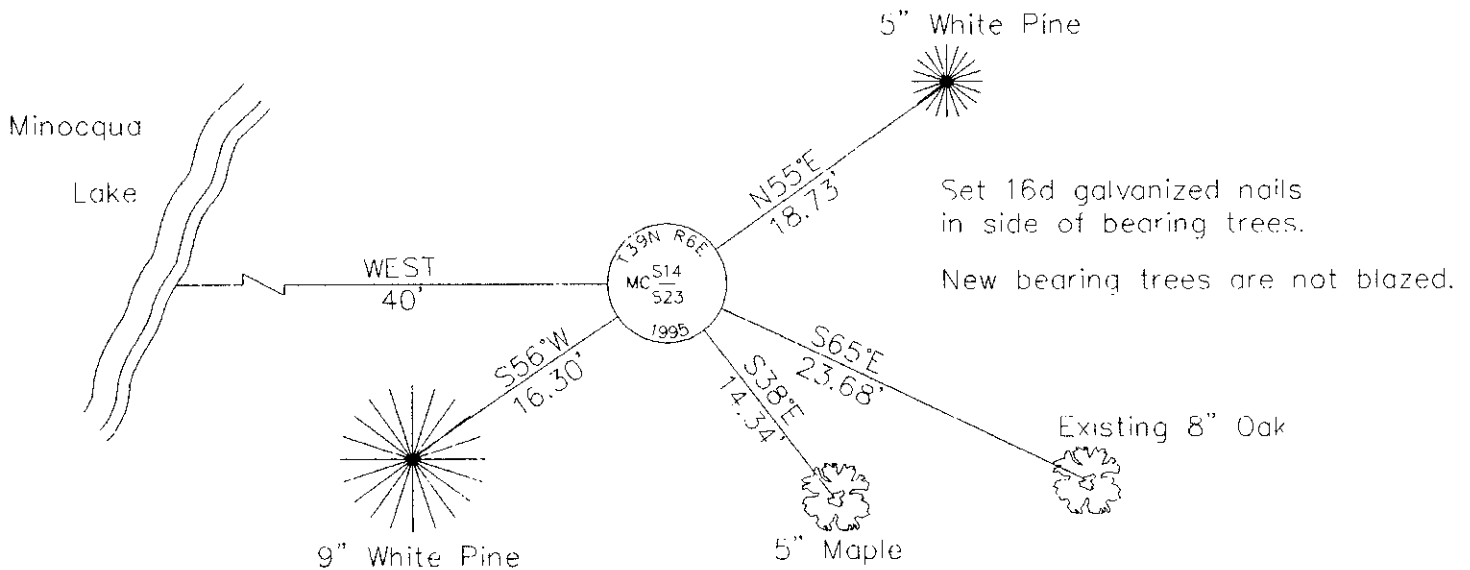
(b)(f)(g)(h) Description of monument found at this corner and if it was accepted—state all evidence (material—testimonial—occupation—plats—records—other monuments) used as a basis for accepting. If not accepted or if nothing was found state evidence used as basis for establishing location. If reestablished through lost corner proportionate methods indicate all monuments—distances and directions used to establish. Indicate type of monument and sign post found or set.

1948--Map by Kowalke/Hennig--Meander corner referenced as "iron monument" with a bearing tree "Oak 5" S69°E 23.3".
 July 7, 1981--Map by John Fisher--Meander corner referenced as "1" Iron rod". Fisher also shows a concrete monument S34°39'44"W, 112.87'.

Oct 18, 1995--found 1" iron rod witnessed by Fisher's concrete monument S35°W, 113'. Also found 8" Oak bearing S65°E, 23.68' to match Kowalke BT.

Replaced iron rod with a 2-1/2" dia. by 30" long, aluminum capped Oneida County Monument.
 Set plastic sign post 1-1/2' north.

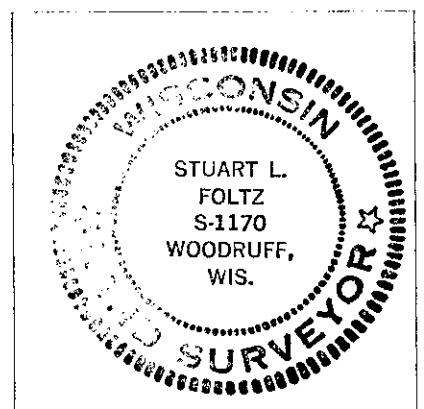
(c)(d)(e) Plan view of corner with ties to at least 4 witness monuments. If in disagreement with previously established corner—show the distances between the two corners and also indicate the ties to the disputed.



(i) I Stuart L. Foltz
 hereby certify that the corner location on this record was determined by me or under my direction and control and that this U.S. Public Land Survey Monument Record is correct and complete to the best of my knowledge and belief.

Stuart L. Foltz
 Signature

12-20-95
 Date



INDEX NO. N-17,18

