

AUG 19 2003

At _____
THOMAS H. LEIGHTON
REGISTER OF DEEDS
Recorders Data

This form is intended to fulfill the requirements of Chapter A-E7.08 (3)(a) thru (i) U.S. Public Land Survey Monument Location Record, Wisconsin Administrative Code. Use the reverse side of form for continuation.

U.S. PUBLIC LAND SURVEY MONUMENT LOCATION RECORD

USPLS CORNER: WEST WITNESS MC SECTION: 22 TOWNSHIP: 39 NORTH RANGE: 6 EAST

NAME OF WATERWAY FOR M.C. CORNER : MINOCQUA LAKE SECTION LINE: NORTH

~~(CITY)(VILLAGE)(TOWN)~~ OF: MINOCQUA COUNTY OF: ONEIDA

Description of monument found or placed and all other evidence used as the basis for monument location; including monuments and measurements required if the corner location was reestablished by lost corner proportionate methods. Also indicate name of the original surveyor, original survey date and the corner monument, bearing trees, witness or other reference monuments established, including measured bearing and distance ties, from available survey records.

Found and accepted an old record 1/2" dia. iron rod with round nosed top 5" up and drove a standard 2" dia. by 30" long aluminum pipe monument over it with stamped Oneida County cap 5" up. Corner falls 6' West on steep bank up from existing lakeshore bearing N10°E. An old woven wire fence and barb wire on grade lead West of the corner, at the SE corner of improved lake frontage lot at Fire No. 8178 Panzer's Drive.

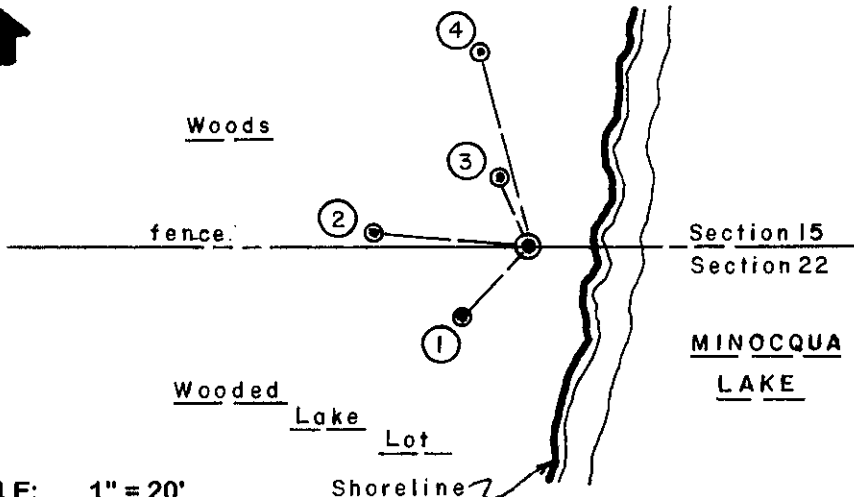
In October 1863, Alexander Anderson/GLO set a wood post as the original corner and noted OBTs: a 50" Pw S18°W 39 links and a 10" Ob N31°W 6 links; all are now obliterated.

Per notes on file at Wilderness Surveying in Woodruff, Wisconsin, in 1943, E.F. Kowalke/RLS 403 notes an iron rod 5" up at this corner and in 1969, William Cameron/RLS 112 notes an iron pipe at this corner, which undoubtedly was the 1/2" dia. by 16" long iron pipe I found with a plain coupling at top and orange flagging lying flat on grade near the old iron rod found, which probably had been set over the iron rod at one time. In September 1997, James D. Rein/RLS 1234 notes a standard Oneida County aluminum monument set at this corner per his Plat of Survey filed as B-3842 in Oneida County survey records. As the monument could not be found, upon my query at the Wilderness Surveying office, Mr. Rein verified that it was intended to set the aluminum monument at the iron rod position that they had also found at the Wit MC and agreed that I should set and reference an Oneida County aluminum monument accordingly.

This recovery completed Jul 7 8, 2003 and witnessed by North adjoining landowner Michael J. Floeter.

Plan view map of monument location with bearing and distance ties to a minimum of four(4) described witness or reference monuments of concrete, natural stone, iron, live bearing trees or equivalent material. If applicable, also show a minimum of two(2) bearing and distance ties to any other monument found and not accepted; including the bearing and distance from the accepted monument.

NORTH



WITNESS MONUMENT TIES:

- ① New 12" Or BT S42°W 10.30'.
- ② New 7" Pw BT N85°W 16.60'.
- ③ New 6" Mr BT N25°W 7.58'.
- ④ New 5.5" Pr BT N15°W 21.30'.

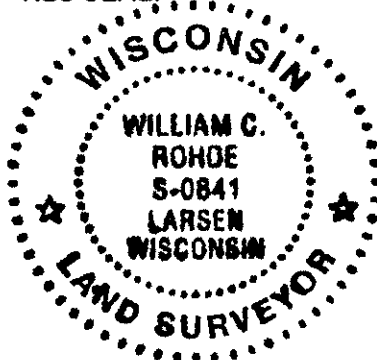
I set a standard white poly 'T' marker post 7" East of the new monument set.

I flagged the corner monument, all BTs and 'T' marker post with blaze orange tape.

SCALE: 1" = 20'

Unless otherwise indicated, all bearing tree ties are to a .25" dia. by 2.5" long PK nail with a 1.25" dia. steel washer driven into unblazed right face and a .25" dia. by 2.5" long PK nail with a 2" dia. steel washer stamped BT is also driven into unblazed face of bearing tree at DBH; the basis for measured bearings is by compass to nearest degree and all tie distances are measured horizontal by steel tape corrected to nearest 1/100th feet at standard temperature of 68° F.

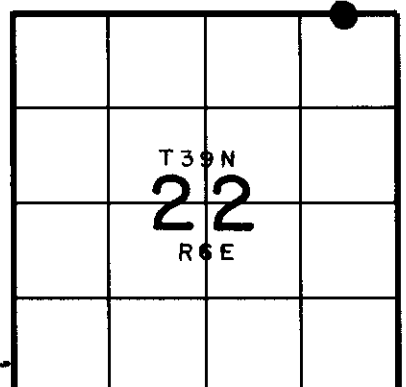
RLS SEAL:



LAND SURVEYOR CERTIFICATE:

I, William C. Rohde, hereby certify that I am duly licensed as a Professional Land Surveyor in the State of Wisconsin; that this USPLS monument location was determined by me and/or under my direct supervision and control; and that this U.S. Public Land Survey Monument Location Record is true and correct to the best of my knowledge and belief.

Signed *William C. Rohde*
William C. Rohde RLS 841



SECTION LOCATION MAP
INDEX NO. N 16-17

Date Signed: August 1, 2003

3906150005