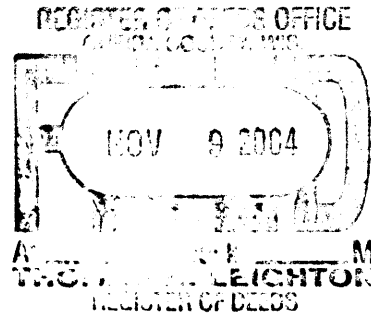


This form is intended to fulfill the requirements of Chapter A-E7.08 (3)(a) thru (i) U.S. Public Land Survey Monument Location Record, Wisconsin Administrative Code. Use the reverse side of form for continuation.



Recorders Data

U.S. PUBLIC LAND SURVEY MONUMENT LOCATION RECORD

USPLS CORNER: EAST WITNESS MC SECTION: 22 TOWNSHIP: 39 NORTH RANGE: 6 EAST
 NAME OF WATERWAY FOR M.C. CORNER: KAWAGUESAGA LAKE SECTION LINE: NORTH
~~(CITY)~~(VILLAGE)(TOWN) OF: MINOCQUA COUNTY OF: ONEIDA

Description of monument found or placed and all other evidence used as the basis for monument location; including monuments and measurements required if the corner location was reestablished by lost corner proportionate methods. Also indicate name of the original surveyor, original survey date and the corner monument, bearing trees, witness or other reference monuments established, including measured bearing and distance ties, from available survey records.

Found a newer 1.5" dia. by 40" long galvanized iron pipe apparently driven as a marker pipe over and older 1" dia. iron pipe with uncapped top 2" up at this corner location. I removed the newer 1.5" dia. marker pipe and drove a standard 2" dia. by 30" long aluminum pipe monument with stamped Oneida County cap 1" above existing grade over the older 1" dia. iron pipe. Corner falls N55°E 11.5' from rocky riprapped lake shoreline bearing S35°E+/- this date.

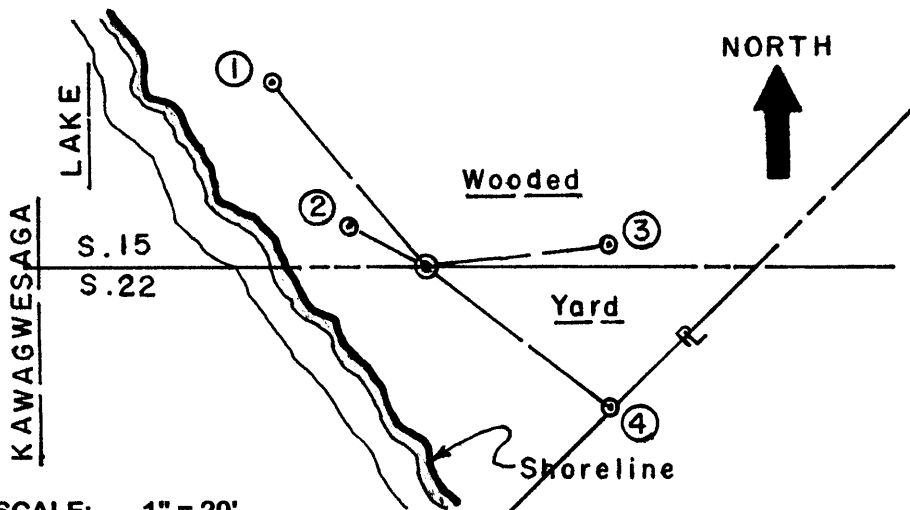
In October 1863, Alexander Anderson/GLO set a wood post as original corner and noted OBTs: a 24" Py N01°E 65 links and a 5" Bw S68°E 19 links; all now obliterated beyond recovery purposes.

In July 1966, Stuart L. Foltz/RLS 1170, notes an iron pipe at this corner and a 14" Oak BT N31°E 29.2, both found OK this date, per Plat of Survey filed as C-814 in Oneida County survey records. Iron pipe and BT also noted the same per deed recorded in Volume 925 Page 733 Oneida County records.

This corner previously located by GPS control survey at 287722 dE UTM and 5082262 dN UTM per Oneida County survey records, which checked OK within 0 meters dE and 10 meters dN by Garmin GPS 72 handheld receiver.

This recovery completed 09/09/04; there were no direct witnesses.

Plan view map of monument location with bearing and distance ties to a minimum of four(4) described witness or reference monuments of concrete, natural stone, iron, live bearing trees or equivalent material. If applicable, also show a minimum of two(2) bearing and distance ties to any other monument found and not accepted; including the bearing and distance from the accepted monument.



WITNESS MONUMENT TIES:

- ① New 9" Bw BT N40°W 24.44'
- ② New 5.5" Mr BT N60°W 8.61'
- ③ New 4.5" Pw BT N83°E 19.13'
- ④ 2" galvanized record iron pipe with uncapped top 6" up S52°E 24.05'

Standard white poly 'T' marker post set 5" SW of corner monument.

I did not flag nor set a PK/BT washer in face of new BTs as in yard area. I left the 1.25" galvanized marker pipe flat on grade nearby.

SCALE: 1" = 20'

Unless otherwise indicated, all bearing tree ties are to a .25" dia. by 2.5" long PK nail with a 1.25" dia. steel washer driven into unblazed right face and a .25" dia. by 2.5" long PK nail with a 2" dia. steel washer stamped BT is also driven into unblazed face of bearing tree at DBH; the basis for measured bearings is by compass to nearest degree and all tie distances are measured horizontal by steel tape corrected to nearest 1/100th feet at standard temperature of 68° F.

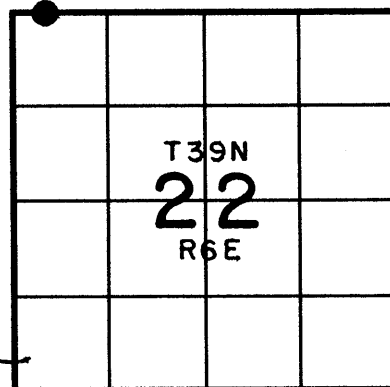
RLS SEAL:



LAND SURVEYOR CERTIFICATE:

I, William C. Rohde, hereby certify that I am duly licensed as a Professional Land Surveyor in the State of Wisconsin; that this USPLS monument location was determined by me and/or under my direct supervision and control; and that this U.S. Public Land Survey Monument Location Record is true and correct to the best of my knowledge and belief.

Signed: *William C. Rohde*
 William C. Rohde RLS 841



SECTION LOCATION MAP
 INDEX NO. N 13-14
 3906150037