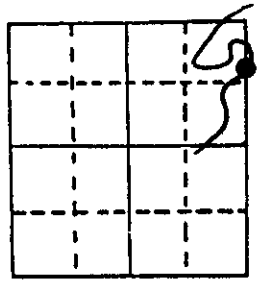


U.S. PUBLIC LAND SURVEY MONUMENT RECORD

Note: This form is intended and designed to fulfill all requirements of Wisconsin Administrative Code, Chapter A-E 5.02, U.S. Public Land Survey Monument Record (3) (a) (b) (c) (d) (e) (f) (g) (h) (i). An additional sheet may be added if necessary to conform with said requirements.

(a) Corner location: Township 39 North
 Range 6 East

SOUTH MEANDER CORNER
 ON EAST LINE OF GOV'T.
 LOT 1, SECTION 15



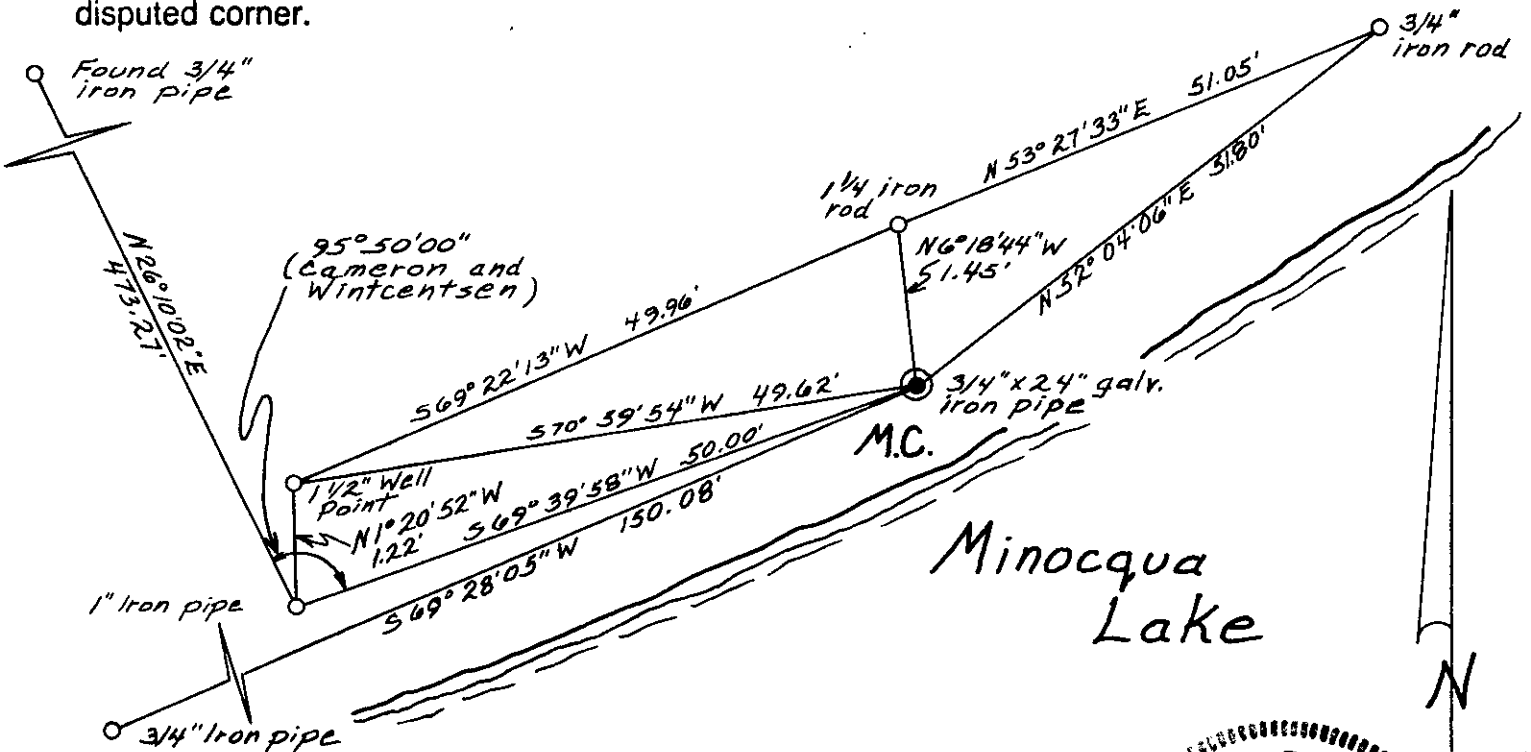
Town Minocqua
 County Oneida

Section 15

(b) (f) (g) (h) Description of monument found at this corner and if it was accepted, state all evidence (material, testimonial, occupational, plats, records, other monuments) used as a basis for accepting. If not accepted or if nothing was found, state evidence used as basis for establishing location. If reestablished through lost corner proportionate methods, indicate all monuments, distances and directions used to establish.

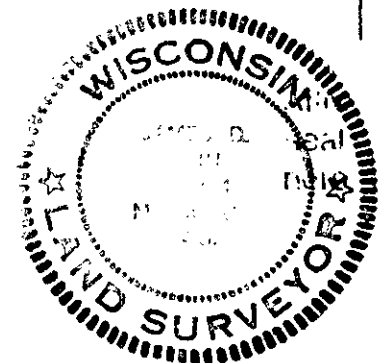
- October, 1863 - Alexander Anderson, Deputy Surveyor - Set Meander post W. Pine 36", N75°W, 35 links and Y. Pine 12" N12°E, 113 links.
- June, 1948 - Walter A. Hennig, Surveyor - identifies M.C. as iron pipe. Oak 9" S52°W, 2.3'
- December, 1960 - F. R. Wincentsen - shows I.P. and B.T.s in place on Map No. 2716-1 dated December 23, 1960.
- December, 1965 - William S. Cameron - shows M.C. as 2" iron pipe, with a tie to a 1" iron pipe bearing S69°-45'W, 50.0 feet.
- August, 1976 - James D. Rein - Corner dozed out, Set 3/4" dia. x 24" long galv. iron pipe from ties to this M.C. as shown on Genisot Engineering Co. Map No. 2716-1 by F.R. Wincentsen and a William S. Cameron map dated December 1965. 12" Oak bears S52°W, 2.3 feet.
- July, 1977 - Stuart L. Foltz - Set 1/4" dia. iron rod for M.C. while surveying the Plat of Island City Point.
- June 17, 1986 - James D. Rein - Made additional ties to previously set 3/4" dia. iron pipe M.C. as shown in sketch below.

(c) (d) (e) Plan view of corner with ties to at least 4 witness monuments. If in disagreement with previously established corner, show the distances between the two corners and also indicate the ties to the disputed corner.



(i) James D. Rein, Registered Land Surveyor No. S-1234
 (type or print name) certify that the corner location on this record was determined by me or under my direction and control and that this U.S. Public Land Survey Monument Record is correct and complete to the best of my knowledge and belief.

James D. Rein June 18th 1986
 Signature Date



Index No. K-17

3906153600