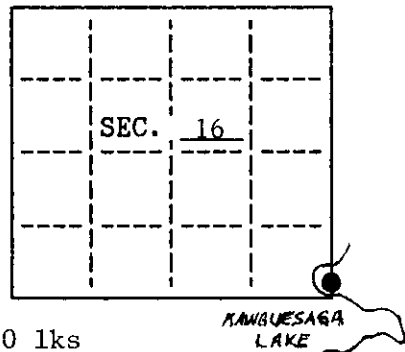


U. S. PUBLIC LAND SURVEY MONUMENT RECORD

Note: This form is intended and designed to fulfill all requirements of Wisconsin Administrative Code, Chapter A-E 7.08 U.S. Public Land Survey Monument Record (3)(a)(b)(c)(d)(e)(f)(g)(h)(i). An additional sheet may be added if necessary to conform with said requirements.

(a) CORNER LOCATION: State Plane Coordinates
 Meander corner of Sec. 16 X _____
 Township 39 North Y _____
 Range 6 East Datum Base _____
 Town/XXX Minocqua County of Oneida

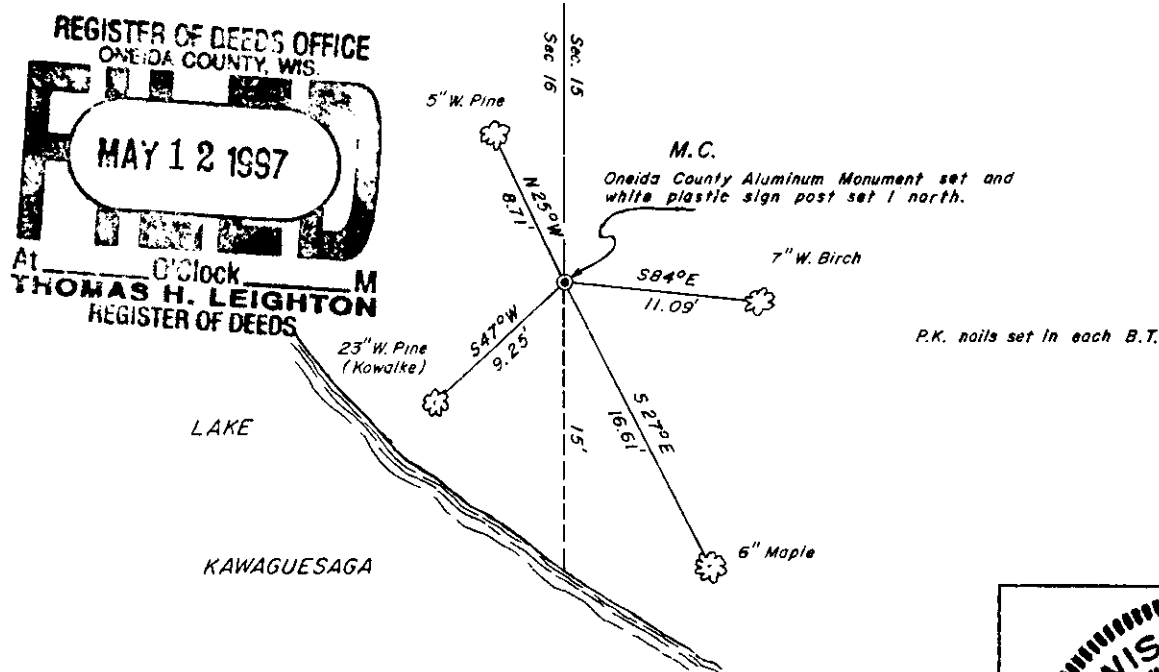


(b) HISTORY OF ORIGINAL CORNER ESTABLISHMENT
 Original Surveyor: Alex Anderson Original B.T.'s
 Date of Survey: Commenced October, 1863 5" Aspen S80°E 30 lks
 5" Birch N10°W 51 lks
 Completed October, 1863

(b)(f)(g)(h) Description of monument found at this corner and if it was accepted, state all evidence (material, testimonial, occupational, plats, records, other monuments) used as a basis for accepting. If not accepted or if nothing was found, state evidence used as basis for establishing location. If reestablished through lost corner proportionate methods, indicate all monuments, distances and directions used to establish. Indicate type of monument and sign post found or set.

- 1959 - Kowalke shows a monument for the meander corner and R.R. spike in 16" W. Pine, S48°W, 9'.
- 1964 - Fisher set a 1-1/4" iron pipe in "old hole found" using Kowalke's B.T. Fisher also found remains of old post badly rotted.
- 1966 - Griffin, while platting Doolittle-Barden's Kawaga Shores, found and accepted a 2" I.D. iron pipe for M.C. and B.T. matching Kowalke's.
- 1996 - I found and accepted a 2 1/2" O.D. iron pipe and Kowalke's blazed B.T. (now 23"). I replace it with an Oneida County Aluminum Monument and made three additional B.T.'s.

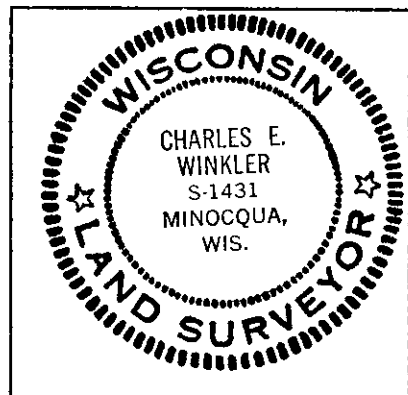
(c)(d)(e) Plan view of corner with ties to at least 4 witness monuments. If in disagreement with previously established corner, show the distances between the two corners and also indicate the ties to the disputed.



REGISTER OF DEEDS OFFICE
 ONEIDA COUNTY, WIS.
MAY 12 1997
 At _____ M
 THOMAS H. LEIGHTON
 REGISTER OF DEEDS

(i) I, Charles E. Winkler S-1431 hereby certify that the corner location on this record was determined by me or under my direction and control and that this U.S. Public Land Survey Monument Record is correct and complete to the best of my knowledge and belief.

Signature Charles E. Winkler Date 12-27-96
 Foltz and Associates, Inc



INDEX NO. MN-13

3906160400