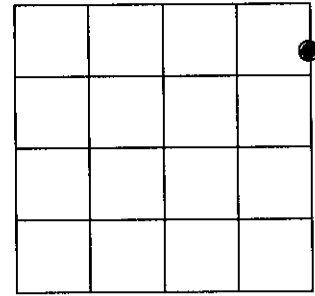


U.S. PUBLIC LAND SURVEY MONUMENT RECORD

Note: This form is intended and designed to fulfill all requirements of Wisconsin Administrative Code, Chapter A-E 7.08 U.S. Public Land Survey Monument Record (3)(a)(b)(c)(d)(e)(f)(g)(h)(i). An additional sheet may be added if necessary to conform with said requirements.

(a) CORNER LOCATION: * east line

North M.C. * corner of Sec. 16 State Plane Coordinates
 Township 39 North X _____
 Range 6 East Y _____
 Town/~~XXX~~/~~XXX~~ Minocqua Datum Base _____
 County of Oneida



(b) HISTORY OF ORIGINAL CORNER ESTABLISHMENT

Original Surveyor: Alexander Anderson Original B.T.'S SECTION 16
 Date of Survey: Commenced October 13th, 1863 7" Aspen, N75°E, 17 links
 Completed October 23rd, 1863 1" Birch, N7°E, 19 links

(f)(g)(h) Description of monument found at this corner and if it was accepted, state all evidence (material, testimonial, occupational, plats, records, other monuments) used as a basis for establishing location. If not accepted of if nothing was found, state evidence used as basis for establishing location. If reestablished through lost corner proportionate methods, indicate all monuments, distances and directions used to establish. Indicate type of monument and sign post found or set.

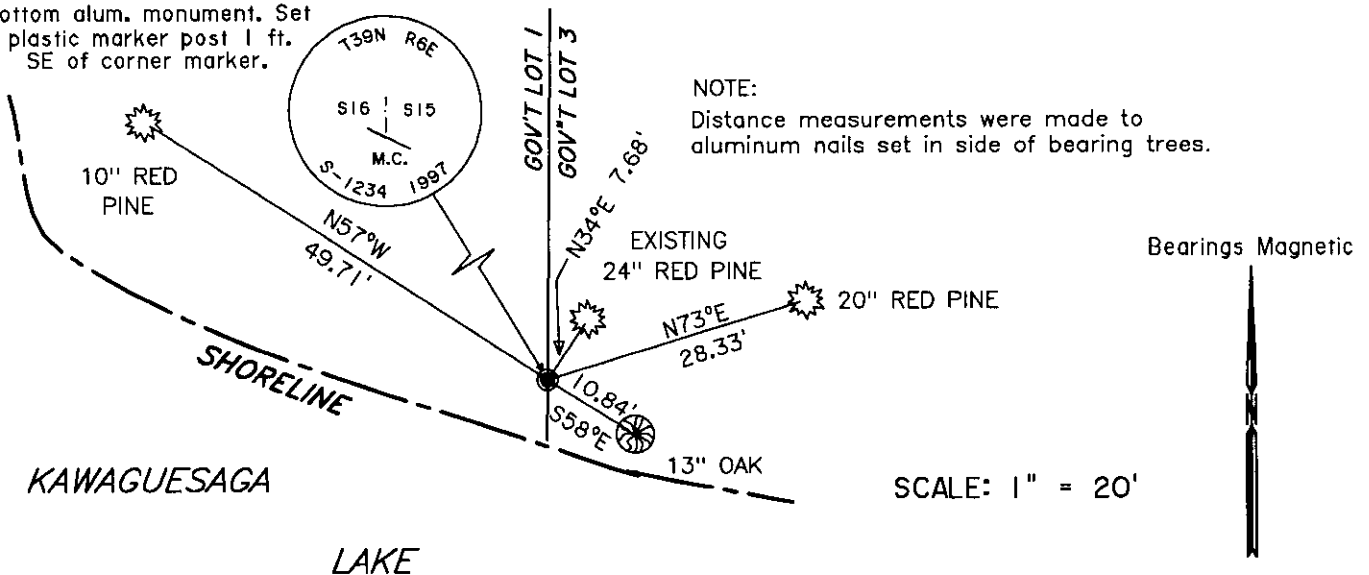
March 17th, 1903: B. F. Dorr, Oneida County Surveyor, re-established Meander Corner 39 links North of original corner. New bearing trees: Norway 13" N40°E, 11 1/3 links; Pine 19" N67 1/2°W, 35 1/2 links.

February 1st, 1945: E. F. Kowalke, Surveyor, identified Dorr's M.C. south of NE corner Section 16. Iron pipe for cor. from which Norway Pine is NE 12 links and W. Pine is NW 35 links. Marks on both trees are grown over, but scars visible.

February 14th, 1997: James D. Rein, Reg. Land Surveyor, recovered 1 1/2" dia. iron pipe referenced by Dorr's Red Pine bearing tree. We replaced iron pipe with a capped 2 inch dia. x 30 inch long flange bottom aluminum monument. Set plastic post 1 foot southeast of corner and made ties to aluminum nails set in the sides of three new unmarked bearing trees.

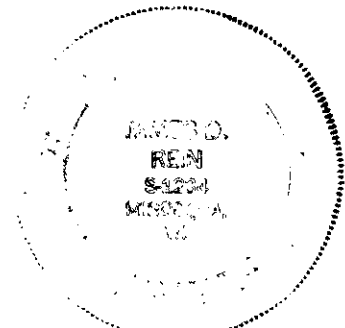
(c)(d)(e) Plan view of corner with ties to at least 4 witness monuments. If in disagreement with previously established corner, show the distance between the two corners and also indicate the ties to the disputed corner.

Replaced 1 1/2" iron pipe with capped 2" dia. x 30" long flanged bottom alum. monument. Set plastic marker post 1 ft. SE of corner marker.



(i) I, James D. Rein, Registered Land Surveyor No. 1234, hereby certify that the corner location on this record was determined by me or under my direction and control and that this U.S. Public Land Survey Monument Record is correct and complete to the best of my knowledge and belief.

James D. Rein April 18th, 1997
 Signature Date



3906163300

INDEX NO. JK 13