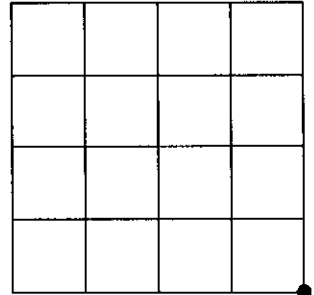


# U.S. PUBLIC LAND SURVEY MONUMENT RECORD

Note: This form is intended and designed to fulfill all requirements of Wisconsin Administrative Code, Chapter A-E 7.08 U.S. Public Land Survey Monument Record (3)(a)(b)(c)(d)(e)(f)(g)(h)(i). An additional sheet may be added if necessary to conform with said requirements.

**(a) CORNER LOCATION:**

Southeast corner of Sec. 17 State Plane Coordinates  
 Township 39 North X \_\_\_\_\_  
 Range 6 East Y \_\_\_\_\_  
 Town/City/Village Minocqua Datum Base \_\_\_\_\_  
 County of Oneida



**(b) HISTORY OF ORIGINAL CORNER ESTABLISHMENT**

Original Surveyor: Alexander Anderson Original B.T.'S SECTION 17  
 Date of Survey: Commenced Oct. 13th, 1863 Tam. 5" N68°W, 145 links  
 Completed Oct. 23rd, 1863 Tam. 5" N10 1/2°E, 203 links

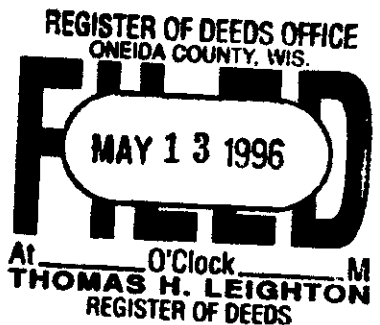
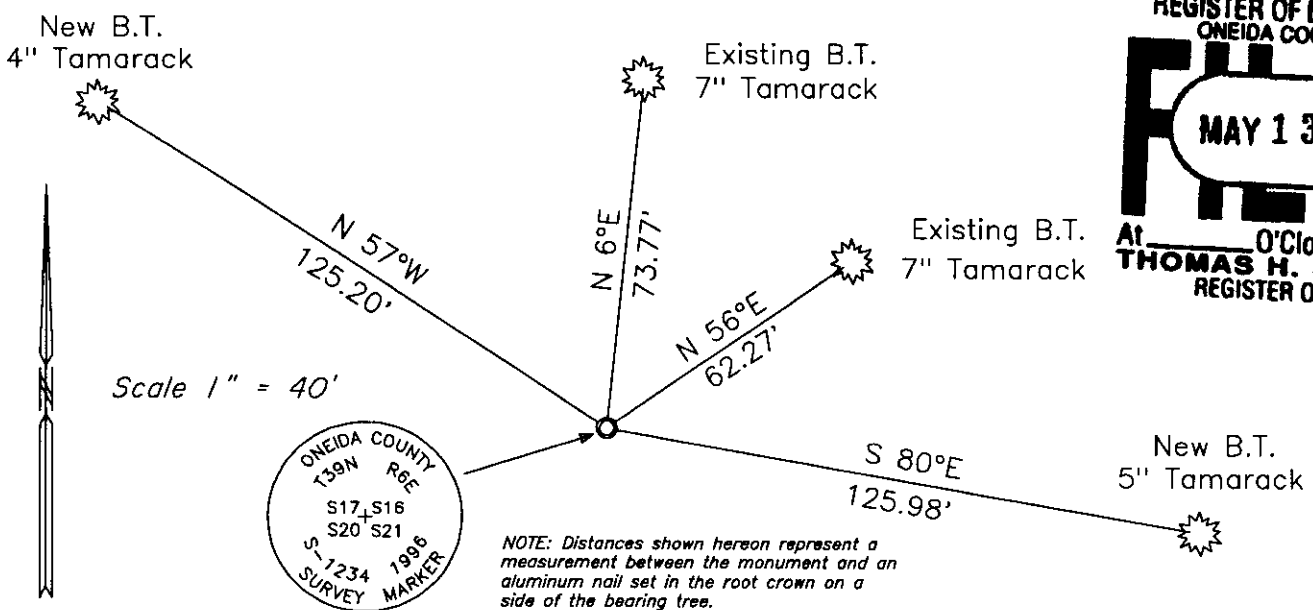
(f)(g)(h) Description of monument found at this corner and if it was accepted, state all evidence (material, testimonial, occupational, plats, records, other monuments) used as a basis for establishing location. If not accepted or if nothing was found, state evidence used as basis for establishing location. If reestablished through lost corner proportionate methods, indicate all monuments, distances and directions used to establish. Indicate type of monument and sign post found or set.

January 16th, 1946 – E. F. Kowalke, Surveyor: Field Book 3, Pages 54 and 55 "Found old square stake, no marks and two smaller stakes, Ogl. B.T. Set new tamarack post".

December 16th, 1952 – E. F. Kowalke, Surveyor: Field Book 10, Page 75 identifies corner by "O.B.T." and New Tam. 7" N53°E, 62 feet and New Tam. 7" North, 73.6 feet.

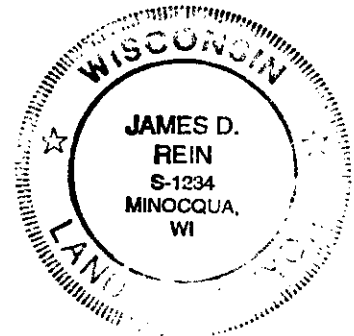
April 27th, 1996 – James D. Rein, R.L.S. No. 1234: Set 1 inch dia. x 7 feet long capped aluminum push type monument to replace point of recovered old wood post (5 inch dia. x 3 feet long) rotted flush in semi open bog wetland. Reset point of old post along east side of monument. Set plastic marker stake 1 foot northeast of corner monument. Recovered existing bearing trees: 7" Tamarack N6°E, 73.77 feet; 7" Tamarack N56°E, 62.27 feet. Made new reference ties as shown in plan view.

(c)(d)(e) Plan view of corner with ties to at least 4 witness monuments. If in disagreement with previously established corner, show the distance between the two corners and also indicate the ties to the disputed corner.



(i) I, James D. Rein, Registered Land Surveyor No. 1234, hereby certify that the corner location on this record was determined by me or under my direction and control and that this U.S. Public Land Survey Monument Record is correct and complete to the best of my knowledge and belief.

James D. Rein April 27th, 1996  
 Signature Date



INDEX NO. N-9

3906170000