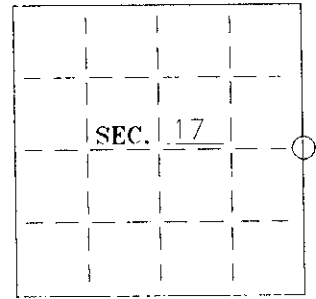


# U. S. PUBLIC LAND SURVEY MONUMENT RECORD

Note: This form is intended and designed to fulfill all requirements of Wisconsin Administrative Code—Chapter A-E 7.08 U. S. Public Land Survey Monument Record (3)(a)(b)(c)(d)(e)(f)(g)(h)(i). An additional sheet may be added if necessary to conform with said requirements.

(a) CORNER LOCATION: State Plane Coordinates  
E 1/4 corner of Sec. 17 X \_\_\_\_\_  
 Township 39 North Y \_\_\_\_\_  
 Range 06 East Datum Base \_\_\_\_\_  
 Town/City Minocqua County of Oneida



(b) HISTORY OF ORIGINAL CORNER ESTABLISHMENT:

Original Surveyor: Alexander Anderson  
 Date of Survey: Commenced Oct 15, 1863  
 Completed Oct 23, 1863

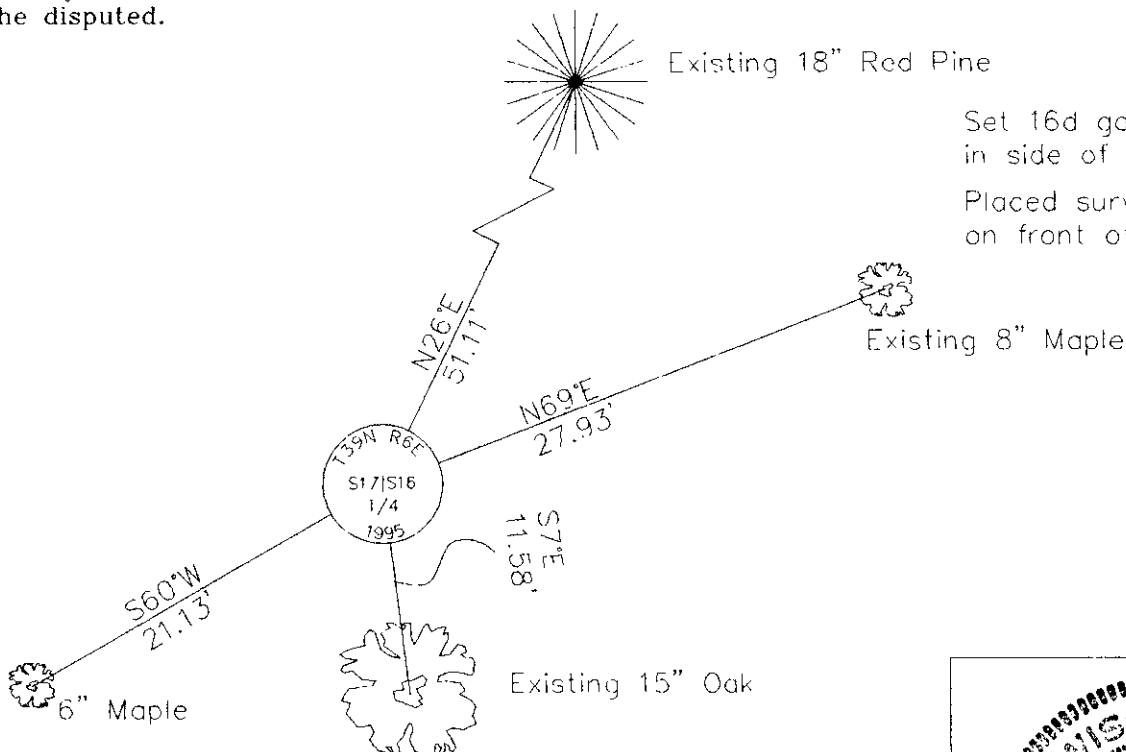
Original B.T.'S

Aspen 12" S56 1/2°E 36 Lks  
 Y. Pine 12" N56°W 11 Lks

(b)(f)(g)(h) Description of monument found at this corner and if it was accepted—state all evidence (material—testimonial—occupation—plats—records—other monuments) used as a basis for accepting. If not accepted or if nothing was found state evidence used as basis for establishing location. If reestablished through lost corner proportionate methods indicate all monuments—distances and directions used to establish. Indicate type of monument and sign post found or set.

Sept 1920--unknown surveyor's notes--Sec. 16-39-6, W 1/4 P new Y Pine 14 N25°E 77.  
 May 1973--Map by William S. Cameron references "iron pipe found" and "8" Oak S12°E 11.1".  
 Nov 6, 1995--Found 1-1/4" iron pipe and old wood post. Also found old bearing trees:  
 15" Oak S7°E 11.58'(Cameron); 18" Red Pine N26°E 51.11'(Sept 1920);  
 8" Maple N69°E 27.93' (unknown).  
 Replaced iron pipe with a 2-1/2" dia. by 30" long, aluminum capped Oneida County Monument.  
 Set plastic sign post 1' southwest.

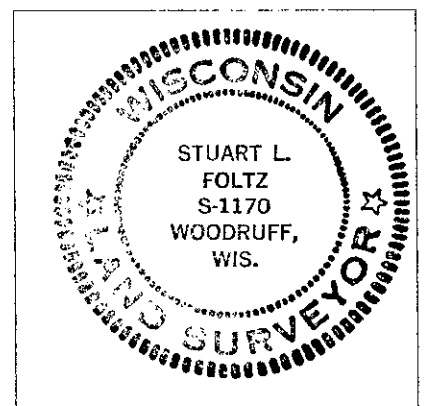
(c)(d)(e) Plan view of corner with ties to at least 4 witness monuments. If in disagreement with previously established corner—show the distances between the two corners and also indicate the ties to the disputed.



(i) I Stuart L. Foltz  
 hereby certify that the corner location on this record was determined by me or under my direction and control and that this U.S. Public Land Survey Monument Record is correct and complete to the best of my knowledge and belief.

Stuart L. Foltz  
 Signature

12-20-95  
 Date



INDEX NO. L-9

3906172000