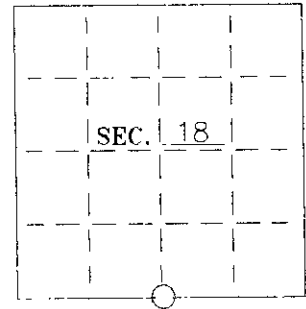


U. S. PUBLIC LAND SURVEY MONUMENT RECORD

Note: This form is intended and designed to fulfill all requirements of Wisconsin Administrative Code—Chapter A-E 7.08 U. S. Public Land Survey Monument Record (3)(a)(b)(c)(d)(e)(f)(g)(h)(i). An additional sheet may be added if necessary to conform with said requirements.

(a) CORNER LOCATION: State Plane Coordinates
S 1/4 corner of Sec. 18 X _____
 Township 39 North Y _____
 Range 06 East Datum Base _____
 Town/City Minocqua County of Oneida



(b) HISTORY OF ORIGINAL CORNER ESTABLISHMENT: Original B.T.'S
 Original Surveyor: Alexander Anderson
 Date of Survey: Commenced Oct 15, 1863 Aspen 9" N59°W 6 links
 Completed Oct 23, 1863 Aspen 8" S68°E 14 links

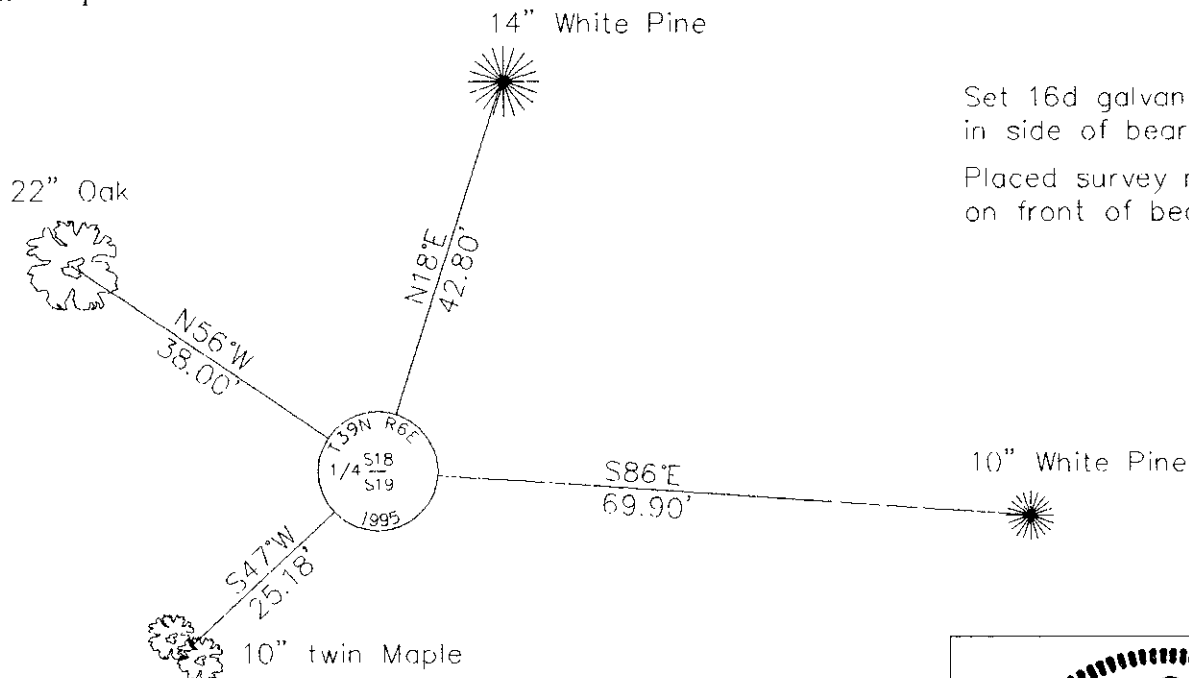
(b)(f)(g)(h) Description of monument found at this corner and if it was accepted—state all evidence (material—testimonial—occupation—plats—records—other monuments) used as a basis for accepting. If not accepted or if nothing was found state evidence used as basis for establishing location. If reestablished through lost corner proportionate methods indicate all monuments—distances and directions used to establish. Indicate type of monument and sign post found or set.

October 10, 1974—John Margitan map—referenced 1-1/2" iron pipe and the following B.T.'s:
 6" Maple S55°W 25.45'; 24" Oak N55°W 38.00'; 12" Poplar stump N48°E 9.50'.

October 10, 1995—Found 1-1/2" iron pipe, an old wood post and the following B.T.'s:
 22" Oak N56°W 38.00', 10" twin Maple S47°W 25.18'.

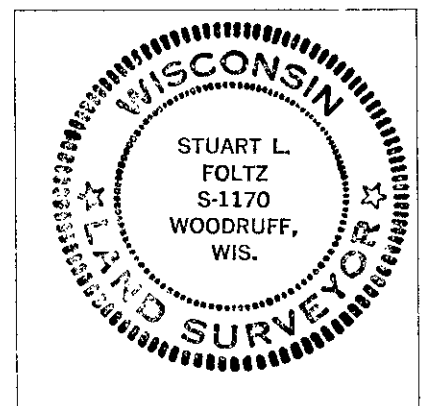
Accepted 1-1/2 iron pipe and replaced it with a 2-1/2" dia. by 30" long aluminum-capped Oneida County monument.
 Set plastic signpost 1-1/2' north.

(c)(d)(e) Plan view of corner with ties to at least 4 witness monuments. If in disagreement with previously established corner—show the distances between the two corners and also indicate the ties to the disputed.



Set 16d galvanized nails in side of bearing trees.
 Placed survey marker plaque on front of bearing trees.

(i) I Stuart L. Foltz
 hereby certify that the corner location on this record was determined by me or under my direction and control and that this U.S. Public Land Survey Monument Record is correct and complete to the best of my knowledge and belief.



INDEX NO. N-3

Stuart L. Foltz 12-20-95
 Signature Date