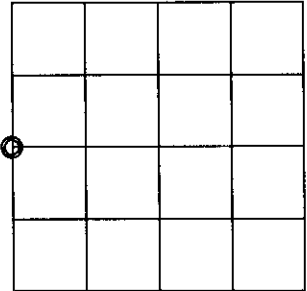


U.S. PUBLIC LAND SURVEY MONUMENT RECORD

Note: This form is intended and designed to fulfill all requirements of Wisconsin Administrative Code, Chapter A-E 7.08 U.S. Public Land Survey Monument Record (3)(a)(b)(c)(d)(e)(f)(g)(h)(i). An additional sheet may be added if necessary to conform with said requirements.

(a) CORNER LOCATION:

West 1/4 corner of Sec. 17 State Plane Coordinates
 Township 39 North X _____
 Range 6 East Y _____
 Town/City/Village ~~XXXXXX~~ Minocqua Datum Base _____
 County of Oneida



(b) HISTORY OF ORIGINAL CORNER ESTABLISHMENT

Original Surveyor: Alexander Anderson Original B.T.'S SECTION 17
 Date of Survey: Commenced Oct. 13th, 1863 Aspen 10" N48 1/2°W, 8 links
 Completed Oct. 23rd, 1863 Aspen 10" N89 1/2°E, 6 links

(f)(g)(h) Description of monument found at this corner and if it was accepted, state all evidence (material, testimonial, occupational, plats, records, other monuments) used as a basis for establishing location. If not accepted or if nothing was found, state evidence used as basis for establishing location. If reestablished through lost corner proportionate methods, indicate all monuments, distances and directions used to establish. Indicate type of monument and sign post found or set.

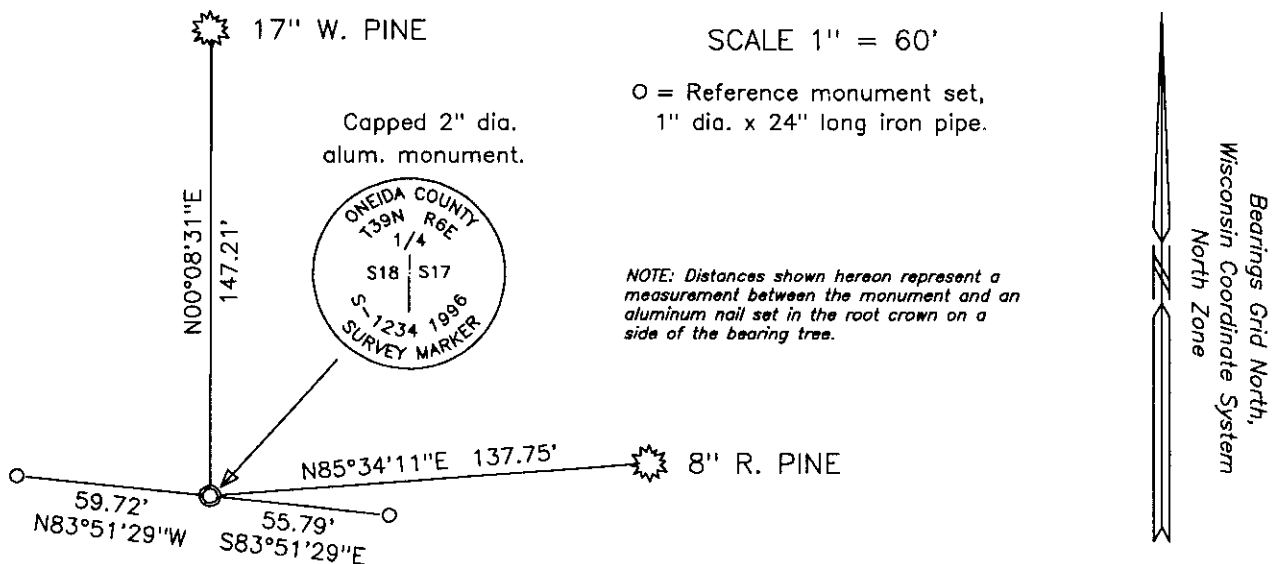
January 21st, 1896 – D. H. Vaughan, County Surveyor: Recovered West 1/4 Post and found original bearing trees.

1967 – Lokken for Owens—Illinois, Forest Products Division: Survey records show the West 1/4 corner was reestablished by single proportionate measurement between section corners.

October 29th, 1974 – John B. Margitan, Registered Land Surveyor: Map filed with the Oneida County Land Records Office as C241 identifies the corner being monumented by a 1 1/2" diameter iron pipe set by Ownens—Illinois personnel by single proportionate measurement.

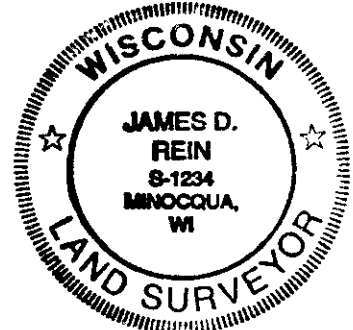
May 3rd, 1996 – James D. Rein, Registered Land Surveyor: Recovered a 1 1/2" diameter iron pipe and 4" square wood post and replaced it with a capped 2" diameter x 30" long flare bottom aluminum monument. Set plastic sign stake one foot Northwest of corner monument and made reference ties as shown on plan view.

(c)(d)(e) Plan view of corner with ties to at least 4 witness monuments. If in disagreement with previously established corner, show the distance between the two corners and also indicate the ties to the disputed corner.



(i) I, James D. Rein, Registered Land Surveyor No. 1234, hereby certify that the corner location on this record was determined by me or under my direction and control and that this U.S. Public Land Survey Monument Record is correct and complete to the best of my knowledge and belief.

James D. Rein Signature Date 5/15/96



3906182000

INDEX NO. L-5