

**U. S. PUBLIC LAND SURVEY MONUMENT RECORD**

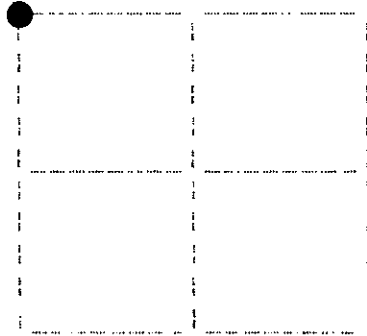
Note: This form is intended and designed to fulfill all requirements of Wisconsin Administrative Code, Chapter A-E 7.09 U.S. Public Land Survey Monument Record (3) (a) (b) (c) (d) (e) (f) (g) (h) (i). An additional sheet may be added if necessary to conform with said requirements.

(a) Corner location: Township 39 North

Range 6 East

Town of Minocqua

Oneida County, Wisconsin



**Section 29**

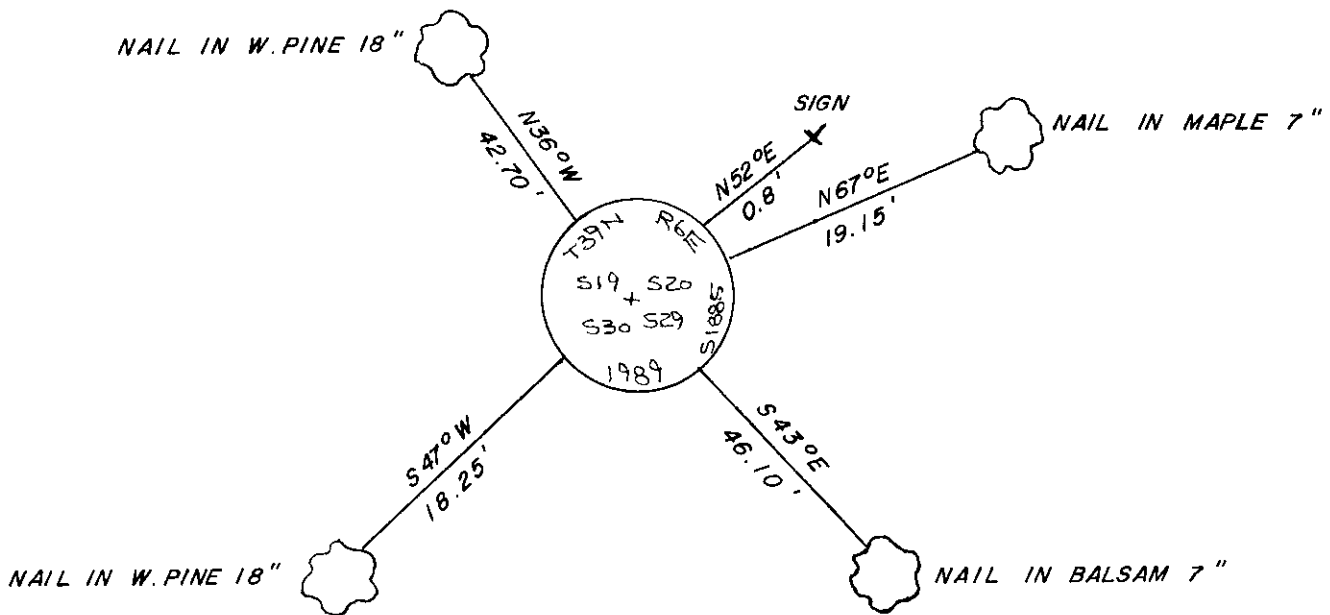
(b) (f) (g) (h) Description of monument found at this corner and if it was accepted, state all evidence (material, testimonial, occupational, plats, records, other monuments) used as a basis for accepting. If not accepted or if nothing was found, state evidence used as basis for establishing location. If reestablished through lost corner proportionate methods, indicate all monuments, distances and directions used to establish. Indicate type of monument found or set and sign post.

October, 1863: Alexander Anderson set a wood post: Tamarack 9" N50°E, 5 lks., W.Pine 10" S32°E, 11 lks.

October 22, 1929: Hall sets iron pipe for corner from original BTs: W.Pine 10" N40°W, 42.4', W.Pine 8" S41-1/2°W, 17.8', DBT S29°E, 7.3'.

November 30, 1989: I found and accepted a 1-3/4" dia. 42" long iron pipe which I replaced with a 2-1/2" dia. 30" long aluminum pipe with a 3-1/4" dia. aluminum tablet stamped as shown below. I also set a DEEP 1 magnet below the monument. I established the following witnesses: nail in W.Pine 18" N36°W, 42.70', nail in Maple 7" N67°E, 19.15', nail in Balsam 7" S43°E, 46.10', nail in W.Pine 18" S47°W, 18.25', dead Balsam 9" N85°E, 23.5', W.Pine 24" S25°W, 6.0', original BT stump S27°E, 7.5', set plastic sign post N52°E, 0.8'.

(c) (d) (e) Plan view of corner with ties to at least four witness monuments. If in disagreement with previously established corner, show the distances between the two corners and also indicate the ties to the disputed corner.



I, Jeffrey W. Austin, Registered Land Surveyor S-1885 certify that the corner location on this record was determined by me or under my direction and control and that this U.S. Public Land Survey Monument Record is correct and complete to the best of my knowledge and belief.



*Jeffrey W. Austin*  
Signature

JANUARY 19, 1990  
Date

INDEX NO. R-5

3806190000