

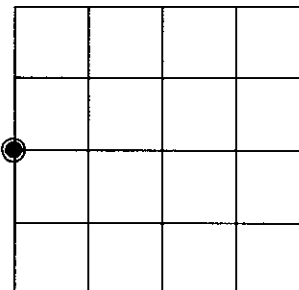
U.S. PUBLIC LAND SURVEY MONUMENT RECORD

Note: This form is intended and designed to fulfill all requirements of Wisconsin Administrative Code, Chapter A-E 7.08 U.S. Public Land Survey Monument Record (3)(a)(b)(c)(d)(e)(f)(g)(h)(i). An additional sheet may be added if necessary to conform with said requirements.

(a) CORNER LOCATION:

West 1/4 corner of Sec. 20
 Township 39 North
 Range 6 East
 Town/~~City/Village~~ Minocqua
 County of Oneida

State Plane Coordinates
 X _____
 Y _____
 Datum Base _____



(b) HISTORY OF ORIGINAL CORNER ESTABLISHMENT

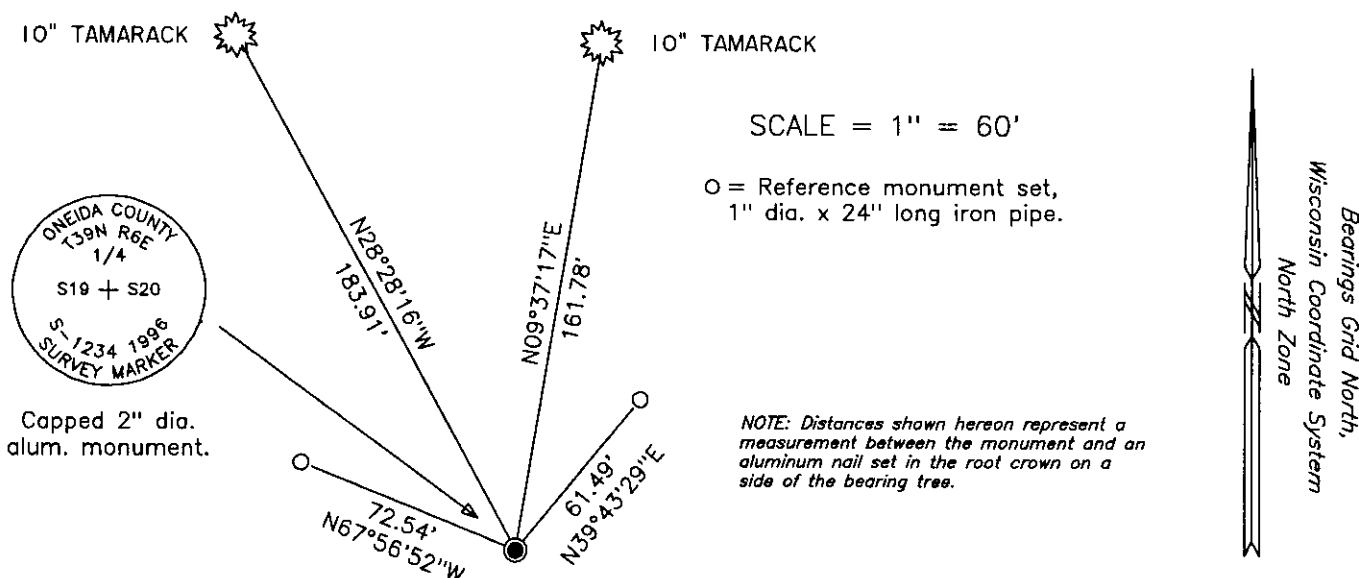
Original Surveyor: Alexander Anderson Original B.T.'S SECTION 20
 Date of Survey: Commenced Oct. 13th, 1863 Tamarack 9" N44 1/2°W 27 links
 Completed Oct. 23rd, 1863 Tamarack 9" East 7 links

(f)(g)(h) Description of monument found at this corner and if it was accepted, state all evidence (material, testimonial, occupational, plats, records, other monuments) used as a basis for establishing location. If not accepted or if nothing was found, state evidence used as basis for establishing location. If reestablished through lost corner proportionate methods, indicate all monuments, distances and directions used to establish. Indicate type of monument and sign post found or set.

1960 - R. Beirlich, for Owens-Illinois, Forest Products Division: Survey records indicated a monumented corner position with no ties to adjacent corners.

May 3rd, 1996 - James D. Rein, Registered Land Surveyor: Unable to find any evidence of corner either original or subsequent monumentation. Corner position is located in beaver flowage area approximately 85 feet northerly of a creek which bears Northeast - Southwest. I evaluate the monumented East-West quarter line location in Section 20 based upon a combination of recent GPS survey control for Oneida County and the recorded subdivision plat of Beaver Hills Addition to Lakes in the Woods. The existing center quarter corner appears to be in harmony with a proportionate position for this corner. Thus based upon a combination of my conventional survey control tied to GPS control furnished by the Oneida County Land Records Department, and at record proportionate distance between the northwest and southwest corners of Section 20, I set a 2" diameter x 60 inch long piston point aluminum monument 48 inches in the ground. The corner common to Sections 17-18-19-20 bears N00°11'-13"E for a distance of 2766.78 feet and the corner common to Sections 19-20-29-30 bears S00°11'13"W for a distance of 2766.78 feet. Set a plastic sign stake 1 foot North of corner and made ties to references as shown in plan view.

(c)(d)(e) Plan view of corner with ties to at least 4 witness monuments. If in disagreement with previously established corner, show the distance between the two corners and also indicate the ties to the disputed corner.



(i) I, James D. Rein, Registered Land Surveyor No. 1234, hereby certify that the corner location on this record was determined by me or under my direction and control and that this U.S. Public Land Survey Monument Record is correct and complete to the best of my knowledge and belief.

James D. Rein
 Signature

May 3rd, 1996
 Date



INDEX NO. P - 5

3906192000