

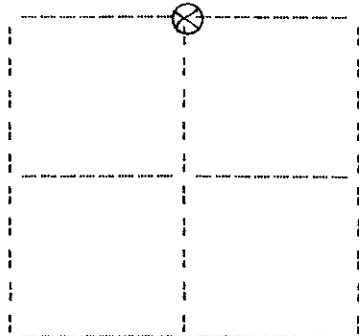
U. S. PUBLIC LAND SURVEY MONUMENT RECORD

Note: This form is intended and designed to fulfill all requirements of Wisconsin Administrative Code, Chapter A-E 7.08 U.S. Public Land Survey Monument Record (3) (a) (b) (c) (d) (e) (f) (g) (h) (i). An additional sheet may be added if necessary to conform with said requirements.

(a) Corner location: Township 39 North
Range 6 East

Town of Minocqua

Oneida County, Wisconsin



Section 29

(b)(f)(g)(h) Description of monument found at this corner and if it was accepted, state all evidence (material, testimonial, occupational, plats, records, other monuments) used as a basis for accepting. If not accepted or if nothing was found, state evidence used as basis for establishing location. If reestablished through lost corner proportionate methods, indicate all monuments, distances and directions used to establish. Indicate type of monument found or set and sign post.

October, 1863: Alexander Anderson notes the following: 39.88 set 1/4 sec. post: w.pine 10 S53°E, 25 lks.; do 8 N30°E, 63 lks.

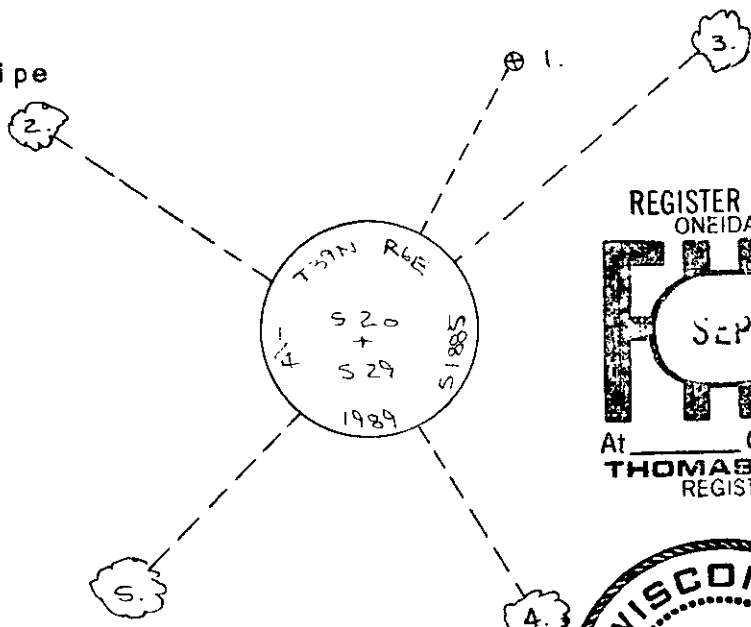
October 28, 1929: Hall page 58 notes the following: marshall finds this orig. 1/4 & H.C.H. chops in & discovers both orig. BTs. both stumps grown shut. check fairly well. at intersection of record distances from: set corner. drive 1"x30" iron pipe. orig. BT N29°E, .63; orig. BT S47°E, .25; notch in 5" w.pine N59°W, .218; notch in 13" w.pine N47-20E, .706. this is exactly at E edge of swamp as per gov't. notes.

July 24, 1990: I found and accepted a 1-1/2" dia. iron pipe near the east edge of a bog. I replaced the pipe with a 3-1/4" dia. aluminum cap on a 30" long aluminum post stamped as shown below. From which: a pine stp. with visible axe marks bears S46°E, 16.8 feet; a pine stp. with scribing plain bears N28°E, 41.5 feet; an erroneous iron pipe 1" bears N28°E, 7.90 feet; a nail set in a prev. w.pine 15" bears N56°W, 14.55 feet; a nail set in a prev. w.pine 22" bears N49°E, 47.36 feet; a nail set in a balsam 8" bears S31°E, 10.70 feet; a nail set in a tamarack 8" bears S44°W, 27.20 feet; a plastic sign post was set north, 1 foot. The new bearing trees have not been blazed. It appears the erroneous 1" dia. iron pipe may have been set by the paper company and possibly used in the "Blue Lake Addition to Lakes in the Woods" subdivision.

(c)(d)(e) Plan view of corner with ties to at least four witness monuments. If in disagreement with previously established corner, show the distances between the two corners and also indicate the ties to the disputed corner.

1. erroneous 1" dia. iron pipe
N28E, 7.90 feet.
2. nail in w.pine 15"
N56W, 14.55 feet.
3. nail in w.pine 22"
N49E, 47.36 feet.
4. nail in balsam 8"
S31E, 10.70 feet.
5. nail in tamarack 8"
S44W, 27.20 feet.

(not to scale)



REGISTER OF DEEDS OFFICE
ONEIDA COUNTY, WIS
FILED
SEP 4 1990
At _____ O'Clock _____ M
THOMAS H. LEIGHTON
REGISTER OF DEEDS

WISCONSIN
Jeffrey W. Austin
S-1885
Minocqua,
WIS.
LAND SURVEYOR

I, Jeffrey W. Austin, Registered Land Surveyor S-1885 certify that the corner location on this record was determined by me or under my direction and control and that this U.S. Public Land Survey Monument Record is correct and complete to the best of my knowledge and belief.

Jeffrey W. Austin
Signature

AUGUST 17, 1990
Date

Index No. R-7

3906200020

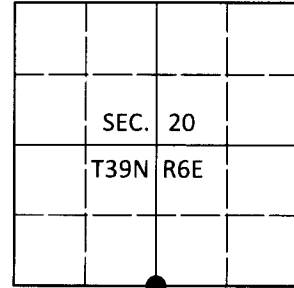
R-7

U.S. PUBLIC LAND SURVEY MONUMENT RECORD

Note: This form is intended and designed to fulfill all requirements of Wisconsin Administrative Code, Chapter A-E 7.08 U.S. Public Land Survey Monument Record (3)(a-i).

(a) CORNER LOCATION
 1/4 Cor. of Secs. 20 & 29
 Township 39 North
 Range 6 East of the 4th P.M.
 Town of Minocqua
 County of Oneida

WISCRS - Oneida County
 N: 241,031.66 USft
 E: 173,255.40 USft
 Datum: NAD 83(2011)
 GNSS Method: RTN - Direct
 GNSS Control: WISCORS VRS



(b) HISTORY OF ORIGINAL CORNER ESTABLISHMENT

Original Surveyor:

Original Accessories:

Date of Survey Commenced:
 Completed:

See previous USPLS Monument Record

(b)(f)(g)(h) Description of monument found at this corner and if it was accepted, state all evidence (material, testimonial, occupational, plats, records, other monuments) used as a basis for accepting. If not accepted or if nothing was found, state evidence used as basis for establishing location. If re-established through lost corner proportionate methods, indicate all monuments, distances and directions used to establish. Indicate type of monument and sign post found or set.

This is a perpetuation of a previous USPLS Monument Record by Jeffrey W. Austin, RLS dated Aug. 17, 1990 and filed in the office of the Oneida County Register of Deeds. A complete history of the corner can be found on the previous monument record. I accept the previous location as a true and faithful perpetuation or reestablishment of the original corner location and further perpetuate it as follows.

Dec. 20, 2018: I found and accepted the record monument, a 2-1/2" diam. aluminum pipe with a 3-1/4" diam. Oneida Co. aluminum cap projecting 2" above the ground surface. The record bearing trees identified as #3 and #4 are now gone. I found or established accessories as shown below. I found a white vinyl sign post bearing North, 0.9 ft.

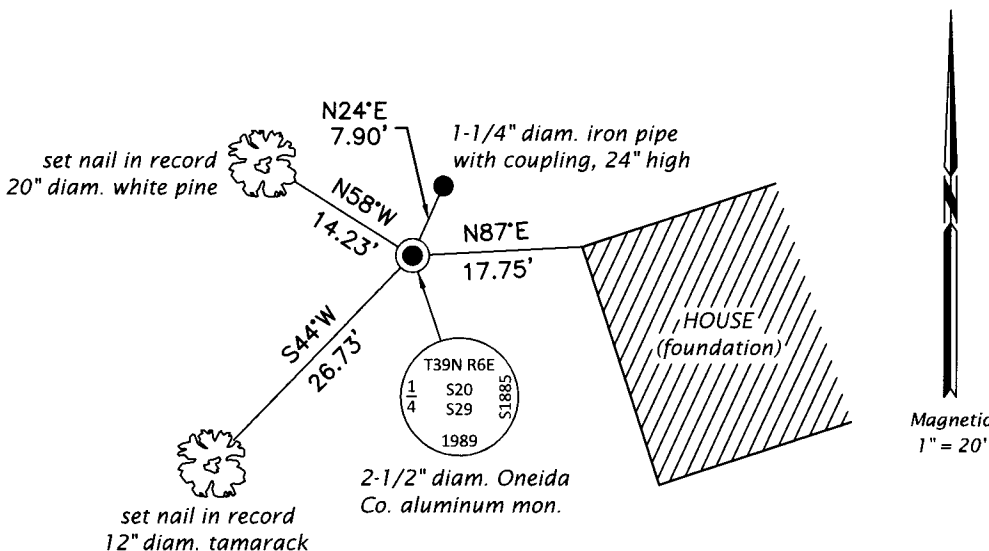
The coordinate value shown has been verified by at least one of the following methods: 1) comparison to a previously GPS determined published value; 2) the value is the average of two or more GPS observations at a markedly different time; 3) one or more distances were measured back to the GPS observed corner from temporary GPS observed offset locations.

REGISTER OF DEEDS OFFICE
 ONEIDA COUNTY
 FILED

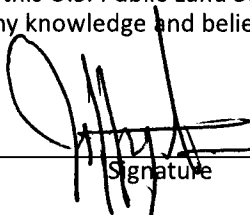
DEC 31 2018

KYLE J. FRANSON
 REGISTER OF DEEDS

(c)(d)(e) Plan view of corner with ties to at least 4 witness monuments. If in disagreement with previously established corner, show the distances between the two corners and also indicate the ties to the disputed.



(i) I, Jeffrey W. Austin, Professional Land Surveyor No. S-1885, hereby certify that the corner location on this record was determined by me or under my direction and control and that this U.S. Public Land Survey Monument Record is correct and complete to the best of my knowledge and belief.


 Signature

24 DEC 2018
 Date