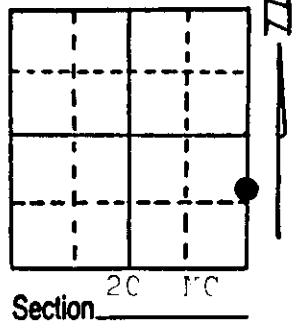


# U.S. PUBLIC LAND SURVEY MONUMENT RECORD

Note: This form is intended and designed to fulfill all requirements of Wisconsin Administrative Code, Chapter A-E 5.02, U.S. Public Land Survey Monument Record (3) (a) (b) (c) (d) (e) (f) (g) (h) (i). An additional sheet may be added if necessary to conform with said requirements.

(a) Corner location: Township 39 North  
 Range 6 East/West  
 Minocqua  
 Town/City/Village \_\_\_\_\_  
 County Oneida



(b) (f) (g) (h) Description of monument found at this corner and if it was accepted, state all evidence (material, testimonial, occupational, plats, records, other monuments) used as a basis for accepting. If not accepted or if nothing was found, state evidence used as basis for establishing location. If reestablished through lost corner proportionate methods, indicate all monuments, distances and directions used to establish.

Found and accepted 1"x60" iron pipe with old wood post scribed MC S20 S21. (Pipe called for in abutting subdivision). Existing PTs:

Norway Pine 15" (used for new PT)  
 Jack Pine 13" (dead) S87°E 6.0'

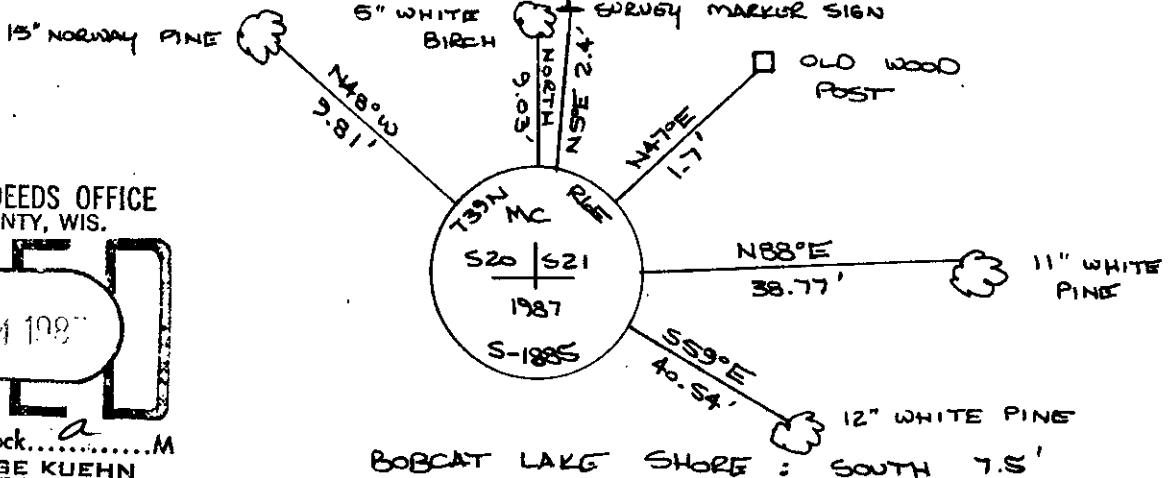
Original survey performed by Alexander Anderson in October, 1863.

Wood post set:

Black Pine 12' S73 1/2°E 55links.

(c) (d) (e) Plan view of corner with ties to at least 4 witness monuments. If in disagreement with previously established corner, show the distances between the two corners and also indicate the ties to the disputed corner.

Bearing trees blazed and scribed - distances to nail in tree.



REGISTER OF DEEDS OFFICE  
 ONEIDA COUNTY, WIS.  
**FILED**  
 SEP 4 1987  
 At 8:00 O'clock a.m.  
 DORIS VERAGE KUEHN  
 REGISTER OF DEEDS

(MAGNET SET BELOW MONUMENT)  
 REPLACED PIPE WITH ONEIDA COUNTY 2"x30" ALUMINUM MONUMENT WITH 3' DIA. TAPEIT STAMPED TO IDENTIFY CORNER.

Jeffrey W. Austin

(i) I, \_\_\_\_\_  
 (type or print name) certify that the corner location on this record was determined by me or under my direction and control and that this U.S. Public Land Survey Monument Record is correct and complete to the best of my knowledge and belief.

*Jeffrey W. Austin*  
 Signature

8-30-87  
 Date



Index No. P-9-9

3906201100