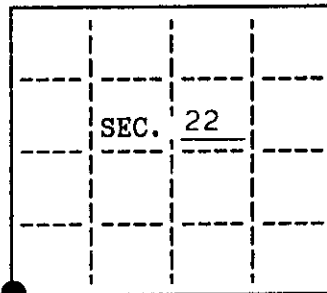


U.S. PUBLIC LAND SURVEY MONUMENT RECORD

Note: This form is intended and designed to fulfill all requirements of Wisconsin Administrative Code, Chapter A-E 7.08 U.S. Public Land Survey Monument Record (3)(a)(b)(c)(d)(e)(f)(g)(h)(i). An additional sheet may be added if necessary to conform with said requirements.

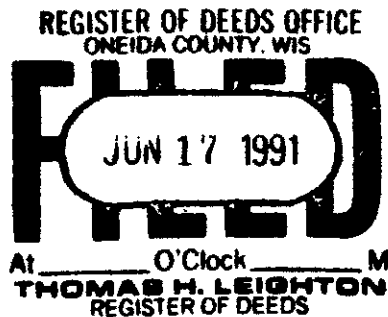
(a) CORNER LOCATION: State Plane Coordinates
 SW corner of Sec. 22 X _____
 Township 39 North Y _____
 Range 6 East Datum Base _____
 Town/City Minocqua County of Oneida



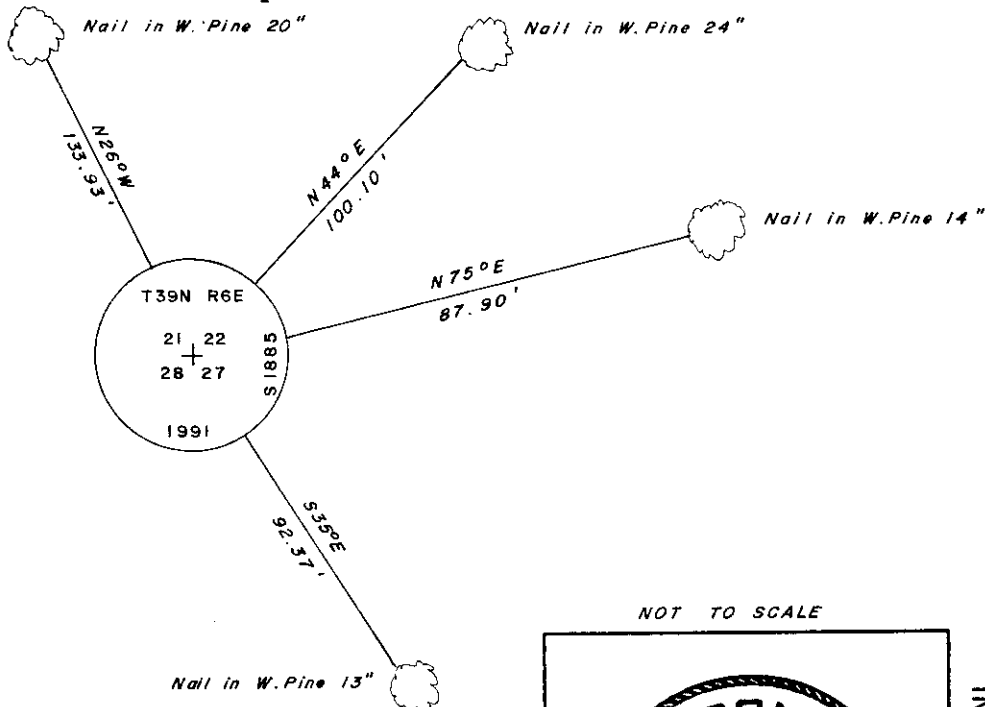
(b) HISTORY OF ORIGINAL CORNER ESTABLISHMENT
 Original Surveyor: Alexander Anderson Original B.T.'S
 Date of Survey: Commenced October, 1863 Tamarac 7 N77°E, 30 links
 Completed October, 1863 Tamarac 7 S49°E, 38 links

(b)(f)(g)(h) Description of monument found at this corner and if it was accepted, state all evidence (material, testimonial, occupational, plats, records, other monuments) used as a basis for accepting. If not accepted or if nothing was found, state evidence used as basis for establishing location. If reestablished through lost corner proportionate methods, indicate all monuments, distances and directions used to establish. Indicate type of monument and sign post found or set.

see reverse....



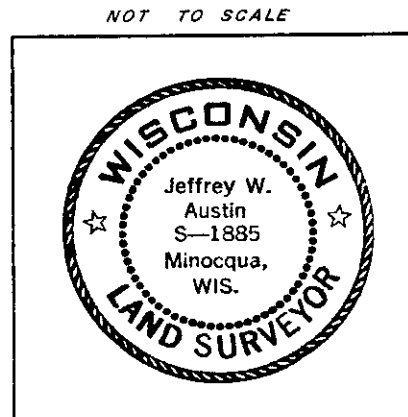
(c)(d)(e) Plan view of corner with ties to at least 4 witness monuments. If in disagreement with previously established corner, show the distances between the two corners and also indicate the ties to the disputed.



(i) I, Jeffrey W. Austin, Registered Land Surveyor hereby certify that the corner location on this record was determined by me or under my direction and control and that this U.S. Public Land Survey Monument Record is correct and complete to the best of my knowledge and belief.

Signature: *[Handwritten Signature]*

JUNE 10, 1991
 Date



INDEX NO. R-13

3906210000

1943: Notes by E.F. Kowalke do not identify the type of monument marking this corner location, but a bearing tree is listed as follows: W.P. 10" N41E, 1.503.

April, 1961: Map by William S. Cameron, Registered Land Surveyor, indicates this corner location is marked by an iron pipe and witnessed by the following: 10" Tamarack stump (orig.) N77°E, 19.8', 10" Tamarack stump (orig.) S49°E, 25.1', 12" W.Pine N41°E, 99.1'.

May 25, 1991: I found and accepted an iron pipe, 30" long, 2-1/4" diam. I replaced this monument with aluminum post, 72" long, 1" diam., with 2-1/2" diam. Oneida County aluminum cap marked as shown on the reverse side of this record. I found the following witnesses: set nail in W.Pine 24" N44°E, 100.10 feet; decayed stump (GLO) N73°E, 19.9 feet; decayed stump (GLO) S49°E, 24.8 feet. I established the following witnesses: set nail in W.Pine 14" N75°E, 87.90 feet; set nail in W.Pine 13" S35°E, 92.37 feet; set nail in W.Pine 20" N26°W, 133.93 feet; set plastic sign post Southwest, 1.5 feet.

U.S. PUBLIC LAND SURVEY MONUMENT RECORD

JUL 29 2021

Note: This form is intended and designed to fulfill all requirements of the Wisconsin Administrative Code, Chapter A-E 7.08 U.S. Public Land Monument Record (3)(a)(b)(c)(d)(e)(f)(g)(h)(i). An additional sheet may be added if necessary to conform with said requirements.

KYLE J. FRANSON
REGISTER OF DEEDS

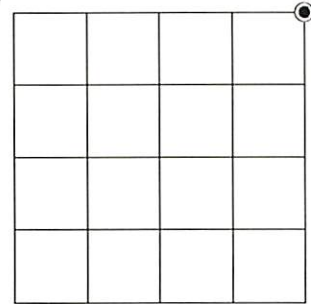
(a) CORNER LOCATION:

Northeast Corner of Section 28
Township 39 North
Range 6 East
Town of Minocqua
County of Oneida

North:
East:
Datum:
GNSS Method:
GNSS Control:

(RECORDING AREA)

SECTION 28



(b) HISTORY OF ORIGINAL CORNER ESTABLISHMENT

Original Surveyor:
Date of Survey: Commenced
Completed
Original B.T.'S

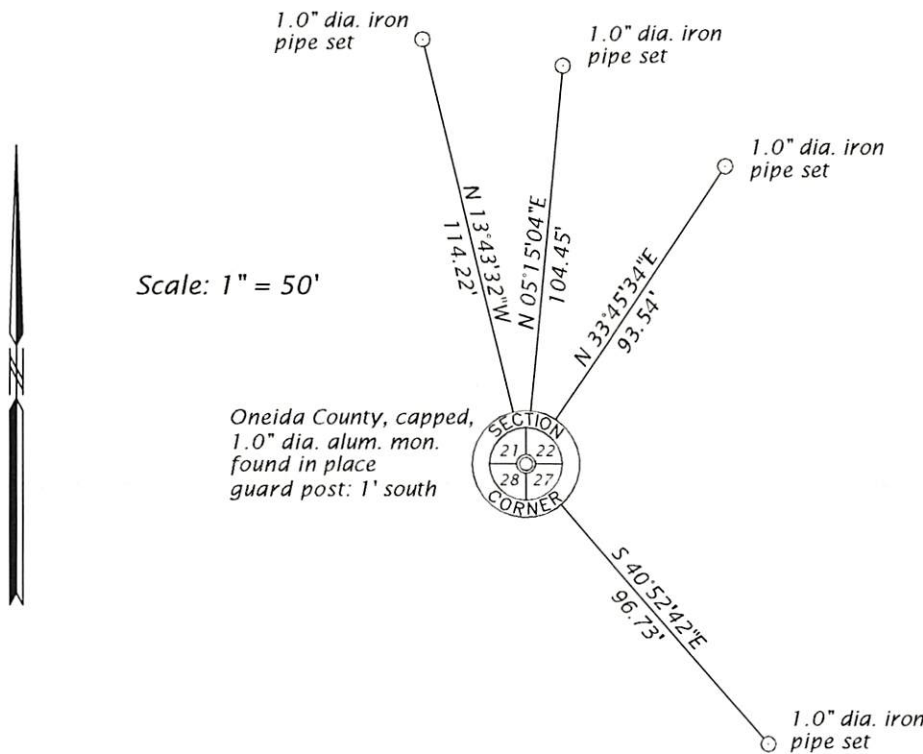
SEE PREVIOUS U.S.P.L.S. MONUMENT
RECORD DATED JUNE 10, 1991.

(f)(g)(h) DESCRIPTION OF MONUMENT FOUND AT THIS CORNER AND IF IT WAS ACCEPTED, STATE ALL EVIDENCE (MATERIAL, TESTIMONIAL, OCCUPATIONAL, PLATS, RECORD, OTHER MONUMENTS) USED AS A BASIS FOR ESTABLISHING LOCATION. IF NOT ACCEPTED OR IF NOTHING WAS FOUND, STATE EVIDENCE USED AS BASIS FOR ESTABLISHING LOCATION. IF REESTABLISHED THROUGH LOST CORNER PROPORTIONATE METHODS, INDICATE ALL MONUMENTS, DISTANCES AND DIRECTIONS USED TO ESTABLISH. INDICATE TYPE OF MONUMENT AND SIGN POST FOUND OR SET.

This is a perpetuation of a previous U.S.P.L.S. Monument Record by Jeffrey W. Austin, RLS, dated June 10, 1991, and filed in the office of the Oneida County Register of Deeds. A complete history of the corner can be found on the previous monument record. I accept the previous location as a true and faithful perpetuation or reestablishment of the original corner location and further perpetuate it as follows.

June 7, 2021, James D. Rein, P.L.S. No. S-1234, we found and I accepted the Oneida County capped aluminum set by Austin in 1991. All the previous bearing trees are now gone. See below for updated witnesses.

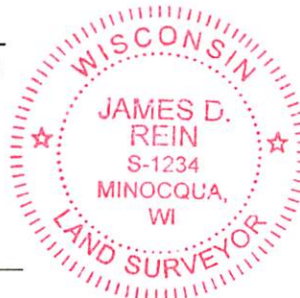
(c)(d)(e) PLAN VIEW OF CORNER WITH TIES TO AT LEAST 4 WITNESS MONUMENTS. IF IN DISAGREEMENT WITH PREVIOUSLY ESTABLISHED CORNER, SHOW THE DISTANCE BETWEEN THE TWO CORNERS AND ALSO INDICATE THE TIES TO THE DISPUTED CORNER.



(i) I, JAMES D. REIN, PROFESSIONAL LAND SURVEYOR NO. S-1234 HEREBY CERTIFY THAT THE CORNER LOCATION ON THIS RECORD WAS DETERMINED BY ME OR UNDER MY DIRECTION AND CONTROL AND THAT THIS U.S. PUBLIC LAND SURVEY MONUMENT RECORD IS CORRECT AND COMPLETE TO THE BEST OF MY KNOWLEDGE AND BELIEF.

James D. Rein
SIGNATURE

7/02/21
DATE



INDEX NO. R - 13
3906210000