

Stock No. 26273

CERTIFIED LAND CORNER RESTORATION

State of Wisconsin

County of Oneida

ss.

I, John H. Fisher, do hereby certify that on the 7th day of October, 1986, I found evidence of the One Quarter corner of Sections 21 and 22, Township 39 North, Range 6 East, Fourth Principal Meridian, as described hereon; and that from this evidence I established a new monument and accessories as described hereon to perpetuate the original location of this corner:

Description of original monument and accessories and subsequent restorations:

The original Government Survey was performed by Alexander Anderson, Deputy Surveyor in October, 1863.

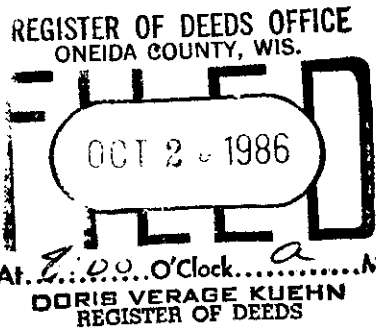
Set Wood post:

Yellow Pine 15" S81°W 126 links
Yellow Pine 10" N12°E 94 links

Description of corner evidence found:

1" iron pipe and 5" X 5" squared post

Original Yellow Pine Stump S78°W 83.25 feet
Original Yellow Pine Stump N10°E 62.05 feet
White Pine 16" S38°W 17.1 feet
White Pine 14" S13°W 71.7 feet



Description of monument and accessories I established to perpetuate the original location of this corner:

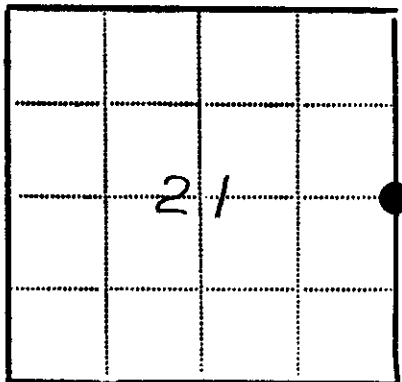
Replaced 1" iron pipe with Oneida County 2" diameter aluminum pipe 30" long with a 3" diameter aluminum tablet to identify corner.

Set nail in BT's found:

White Pine 16" S38°W 17.1 feet
White Pine 14" S13°W 71.7 feet

Set nail in new BT's:

Norway Pine 12" N78°W 27.5 feet
White Pine 7" N31°E 23.2 feet



● - Corner monument restored
□ -

Resident witnesses

Dated at Minocqua Wisconsin, this 13 day of October 1986.

Signature John H. Fisher Title Registered Land Surveyor (County Surveyor, Registered Land Surveyor, or other duly authorized official)

Surveyors Registration No. S-836

Office of County of

I hereby certify that the within instrument was filed in this office for record on the day of 19, and was filed in Book No. Page No. of County Records.

Signature Title

Township Range Section Index No. Page No.

3906212000

P-13

U.S. PUBLIC LAND SURVEY MONUMENT RECORD

Note: This form is intended and designed to fulfill all requirements of the Wisconsin Administrative Code, Chapter A-E 7.08 U.S. Public Land Monument Record (3)(a)(b)(c)(d)(e)(f)(g)(h)(i). An additional sheet may be added if necessary to conform with said requirements.

REGISTER OF DEEDS OFFICE
ONEIDA COUNTY
FILED

JUN 22 2017

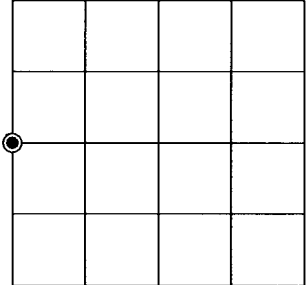
(a) CORNER LOCATION:
West Quarter Corner of Section 22
Township 39 North
Range 6 East
Town of Minocqua
County of Oneida

WCCS - Oneida County
North: 243565.287 USft
East: 181130.203 USft
Datum: NAD 83(2011)
GNSS Method: RTK - Direct
GNSS Control: WISCORS

AT _____ O'CLOCK _____ M
KYLE J. FRANSON
REGISTER OF DEEDS

(RECORDING AREA)

SECTION 22



(b) HISTORY OF ORIGINAL CORNER ESTABLISHMENT

Original Surveyor:
Date of Survey: Commenced _____
Completed _____
Original B.T.'S _____

**SEE PREVIOUS U.S.P.L.S. MONUMENT
RECORD DATED OCTOBER 13, 1986.**

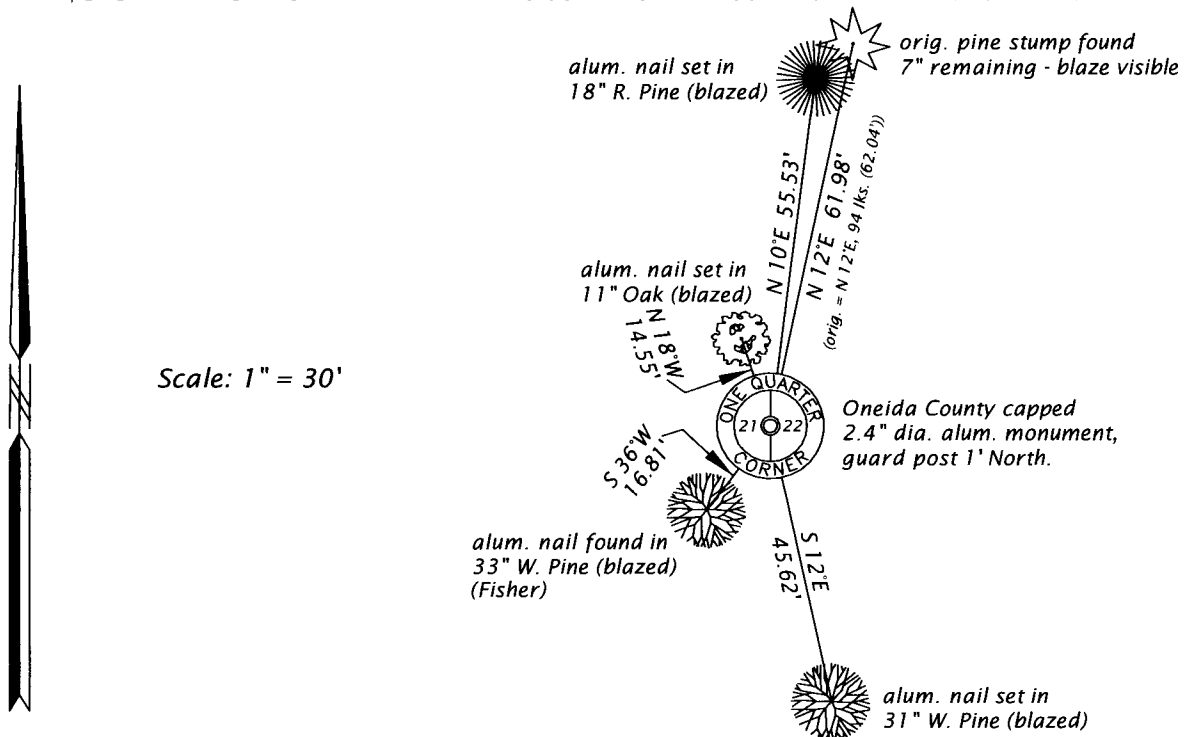
(f)(g)(h) DESCRIPTION OF MONUMENT FOUND AT THIS CORNER AND IF IT WAS ACCEPTED, STATE ALL EVIDENCE (MATERIAL, TESTIMONIAL, OCCUPATIONAL, PLATS, RECORD, OTHER MONUMENTS) USED AS A BASIS FOR ESTABLISHING LOCATION. IF NOT ACCEPTED OR IF NOTHING WAS FOUND, STATE EVIDENCE USED AS BASIS FOR ESTABLISHING LOCATION. IF REESTABLISHED THROUGH LOST CORNER PROPORTIONATE METHODS, INDICATE ALL MONUMENTS, DISTANCES AND DIRECTIONS USED TO ESTABLISH. INDICATE TYPE OF MONUMENT AND SIGN POST FOUND OR SET.

This is a perpetuation of a previous USPLS Monument Record by John. H. Fisher, RLS dated October 13, 1986, and filed in the office of the Oneida County Register of Deeds. A complete history of the corner can be found on the previous monument record. I accept the previous location as a true and faithful perpetuation or reestablishment of the original corner location and further perpetuate it as follows.

May 9, 2017, James D. Rein, PLS No. S-1234, found and accepted the capped aluminum monument set by Fisher in 1986. Several of Fisher's witnesses are now gone. See below for updated witnesses.

The coordinate value shown has been verified by at least one of the following methods: 1) comparison to a previously GPS determined published value; 2) the value is the average of two or more GPS observations at a markedly different time; 3) one or more distances were measured back to the GPS observed corner from temporary GPS observed offset locations.

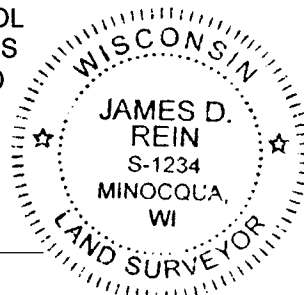
(c)(d)(e) PLAN VIEW OF CORNER WITH TIES TO AT LEAST 4 WITNESS MONUMENTS. IF IN DISAGREEMENT WITH PREVIOUSLY ESTABLISHED CORNER, SHOW THE DISTANCE BETWEEN THE TWO CORNERS AND ALSO INDICATE THE TIES TO THE DISPUTED CORNER.



(i) I, JAMES D. REIN, PROFESSIONAL LAND SURVEYOR NO. S-1234 HEREBY CERTIFY THAT THE CORNER LOCATION ON THIS RECORD WAS DETERMINED BY ME OR UNDER MY DIRECTION AND CONTROL AND THAT THIS U.S. PUBLIC LAND SURVEY MONUMENT RECORD IS CORRECT AND COMPLETE TO THE BEST OF MY KNOWLEDGE AND BELIEF.

[Handwritten Signature]
SIGNATURE

6-15-17
DATE



INDEX NO. P-13
3906212000