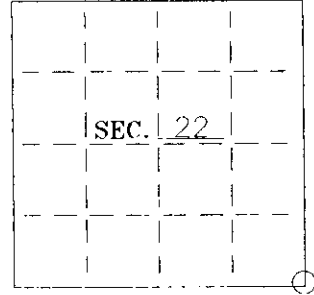


**U. S. PUBLIC LAND SURVEY MONUMENT RECORD**

Note: This form is intended and designed to fulfill all requirements of Wisconsin Administrative Code-Chapter A-E 7.08 U. S. Public Land Survey Monument Record (3)(a)(b)(c)(d)(e)(f)(g)(h)(i). An additional sheet may be added if necessary to conform with said requirements.

(a) CORNER LOCATION: State Plane Coordinates  
SE corner of Sec. 22 X \_\_\_\_\_  
 Township 39 North Y \_\_\_\_\_  
 Range 06 East Datum Base \_\_\_\_\_  
 Town/~~City~~ Minocqua County of Oneida



(b) HISTORY OF ORIGINAL CORNER ESTABLISHMENT:  
 Original Surveyor: Alexander Anderson  
 Date of Survey: Commenced October 15, 1863  
 Completed October 23, 1863

Original B.T.'S  
 White Pine 8" N72°E 58 links  
 White Pine 8" S15°W 9 links

(b)(f)(g)(h) Description of monument found at this corner and if it was accepted--state all evidence (material--testimonial--occupation--plats--records--other monuments) used as a basis for accepting. If not accepted or if nothing was found state evidence used as basis for establishing location. If reestablished through lost corner proportionate methods indicate all monuments--distances and directions used to establish. Indicate type of monument and sign post found or set.

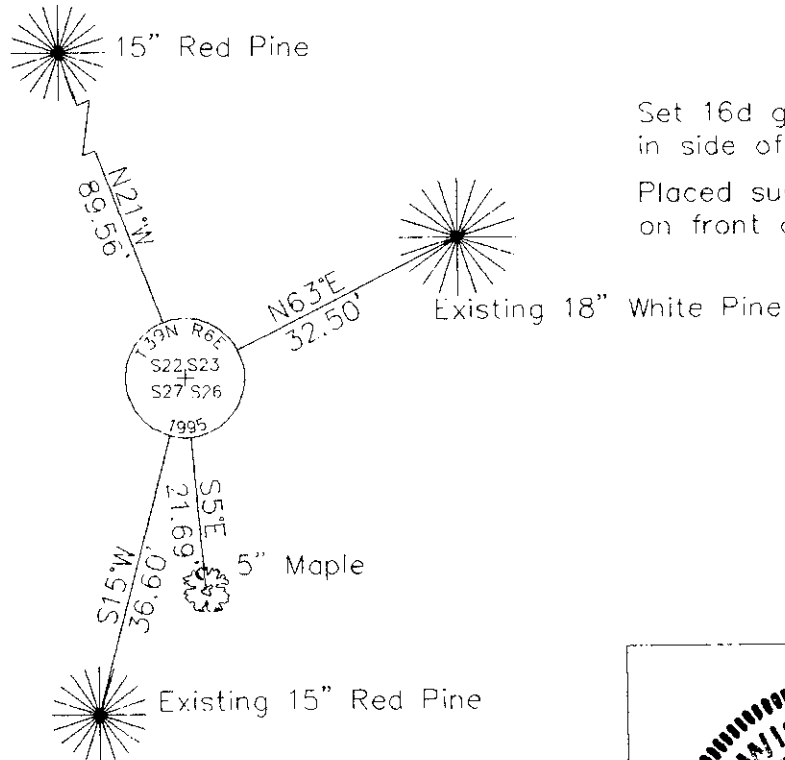
1945--Kowalke Section Map--referenced square cedar post and the following BT's:  
 8" N Pine S12°W 36.2', 12" W Pine N59°E 32.3', old BT S20°W 5.9'.

September 24, 1987--Charles Winkler map--referenced 1-1/4" iron rod found.

October 16, 1995--found 1-1/4" iron rod and the following BT's: 15" Red Pine S15°W 36.6', 18" White Pine N63°E 32.5'.

Accepted the 1-1/4" iron rod and replaced it with a 2-1/2" dia. by 30" long aluminum-capped Oneida County monument. Set plastic signpost 1-1/2' north.

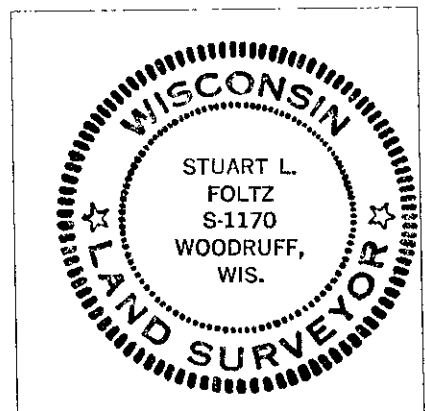
(c)(d)(e) Plan view of corner with ties to at least 4 witness monuments. If in disagreement with previously established corner-show the distances between the two corners and also indicate the ties to the disputed.



Set 16d galvanized nails in side of bearing trees.  
 Placed survey marker plaque on front of bearing trees.

(i) I Stuart L. Foltz hereby certify that the corner location on this record was determined by me or under my direction and control and that this U.S. Public Land Survey Monument Record is correct and complete to the best of my knowledge and belief.

Stuart L. Foltz Signature Date 12-20-95



INDEX NO. R-17

3906220000

SEP 07 2021

KYLE J. FRANSON  
REGISTER OF DEEDS

U.S. PUBLIC LAND SURVEY MONUMENT RECORD

Note: This form is intended and designed to fulfill all requirements of the Wisconsin Administrative Code, Chapter A-E 7.08 U.S. Public Land Monument Record (3)(a)(b)(c)(d)(e)(f)(g)(h)(i). An additional sheet may be added if necessary to conform with said requirements.

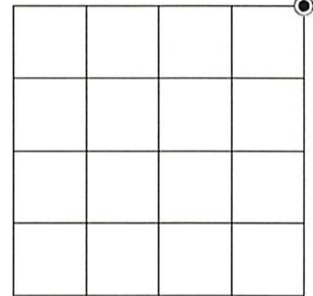
(a) CORNER LOCATION:

Northeast Corner of Section 27  
Township 39 North  
Range 6 East  
Town of Minocqua  
County of Oneida

North:  
East:  
Datum:  
GNSS Method:  
GNSS Control:

(RECORDING AREA)

SECTION 27



(b) HISTORY OF ORIGINAL CORNER ESTABLISHMENT

Original Surveyor:  
Date of Survey: Commenced  
Completed  
Original B.T.'S

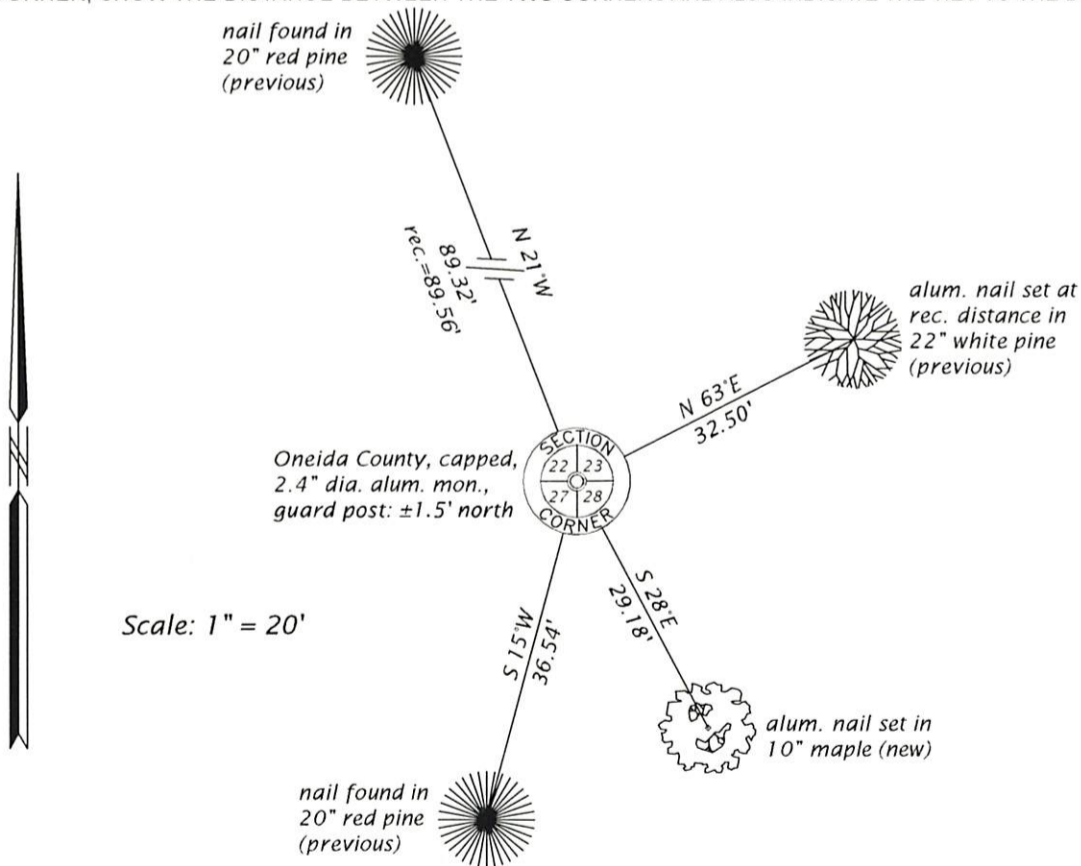
SEE PREVIOUS U.S.P.L.S. MONUMENT  
RECORD DATED DECEMBER 20, 1995.

(f)(g)(h) DESCRIPTION OF MONUMENT FOUND AT THIS CORNER AND IF IT WAS ACCEPTED, STATE ALL EVIDENCE (MATERIAL, TESTIMONIAL, OCCUPATIONAL, PLATS, RECORD, OTHER MONUMENTS) USED AS A BASIS FOR ESTABLISHING LOCATION. IF NOT ACCEPTED OR IF NOTHING WAS FOUND, STATE EVIDENCE USED AS BASIS FOR ESTABLISHING LOCATION. IF REESTABLISHED THROUGH LOST CORNER PROPORTIONATE METHODS, INDICATE ALL MONUMENTS, DISTANCES AND DIRECTIONS USED TO ESTABLISH. INDICATE TYPE OF MONUMENT AND SIGN POST FOUND OR SET.

This is a perpetuation of a previous U.S.P.L.S. Monument Record by Stuart L. Foltz, RLS, dated December 20, 1995, and filed in the office of the Oneida County Register of Deeds. A complete history of the corner can be found on the previous monument record. I accept the previous location as a true and faithful perpetuation or reestablishment of the original corner location and further perpetuate it as follows.

July 29, 2021, we found, and I accepted the Oneida County, aluminum-capped monument, set by Foltz in 1995. The previous southeasterly maple bearing tree is now gone. See below for updated witnesses.

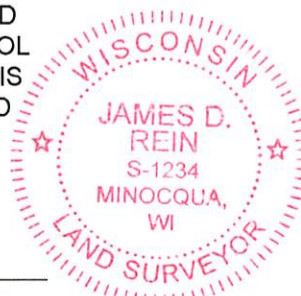
(c)(d)(e) PLAN VIEW OF CORNER WITH TIES TO AT LEAST 4 WITNESS MONUMENTS. IF IN DISAGREEMENT WITH PREVIOUSLY ESTABLISHED CORNER, SHOW THE DISTANCE BETWEEN THE TWO CORNERS AND ALSO INDICATE THE TIES TO THE DISPUTED CORNER.



(i) I, JAMES D. REIN, PROFESSIONAL LAND SURVEYOR NO. S-1234 HEREBY CERTIFY THAT THE CORNER LOCATION ON THIS RECORD WAS DETERMINED BY ME OR UNDER MY DIRECTION AND CONTROL AND THAT THIS U.S. PUBLIC LAND SURVEY MONUMENT RECORD IS CORRECT AND COMPLETE TO THE BEST OF MY KNOWLEDGE AND BELIEF.

*James D. Rein*  
SIGNATURE

SEPT 3, 2021  
DATE



INDEX NO. R - 17  
3906220000