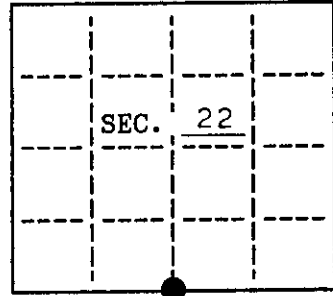


U.S. PUBLIC LAND SURVEY MONUMENT RECORD

Note: This form is intended and designed to fulfill all requirements of Wisconsin Administrative Code, Chapter A-E 7.08 U.S. Public Land Survey Monument Record (3)(a)(b)(c)(d)(e)(f)(g)(h)(i). An additional sheet may be added if necessary to conform with said requirements.

(a) CORNER LOCATION: State Plane Coordinates
 S 1/4 corner of Sec. 22 X _____
 Township 39 North Y _____
 Range 6 East Datum Base _____
 Town/City Minocqua County of Oneida

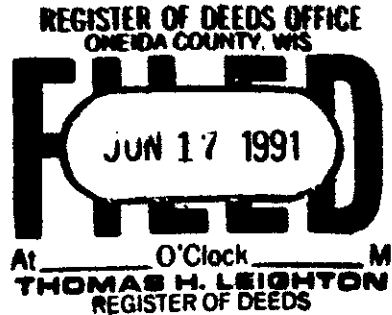


(b) HISTORY OF ORIGINAL CORNER ESTABLISHMENT
 Original Surveyor: Alexander Anderson Original B.T.'S

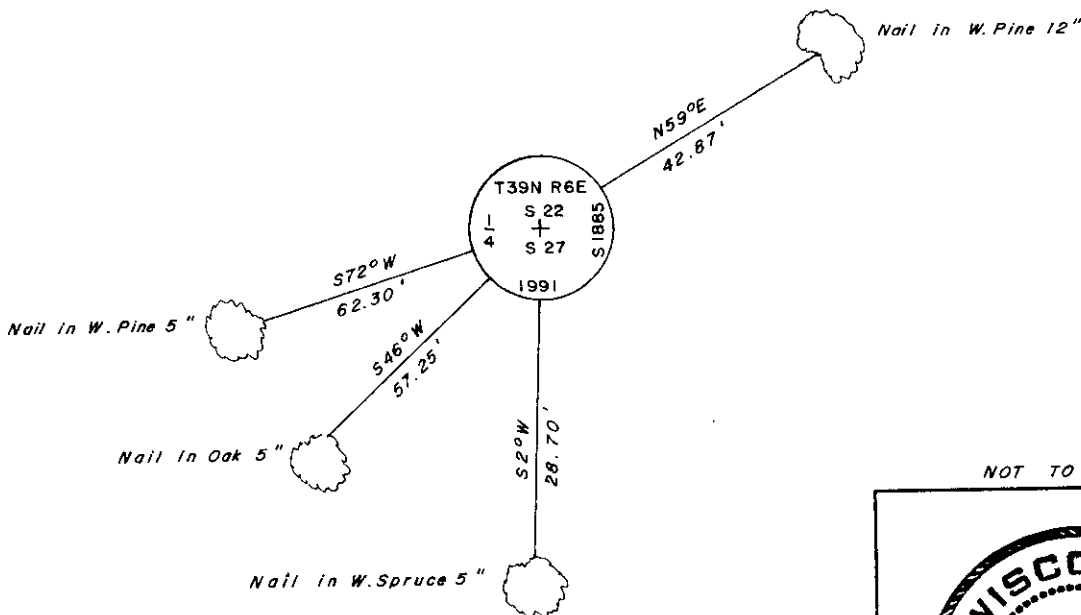
Date of Survey: Commenced October, 1863 Aspen 5 N50°W, 23 links
 Completed October, 1863 Aspen 5 S65°E, 3 links

(b)(f)(g)(h) Description of monument found at this corner and if it was accepted, state all evidence (material, testimonial, occupational, plats, records, other monuments) used as a basis for accepting. If not accepted or if nothing was found, state evidence used as basis for establishing location. If reestablished through lost corner proportionate methods, indicate all monuments, distances and directions used to establish. Indicate type of monument and sign post found or set.

see reverse...

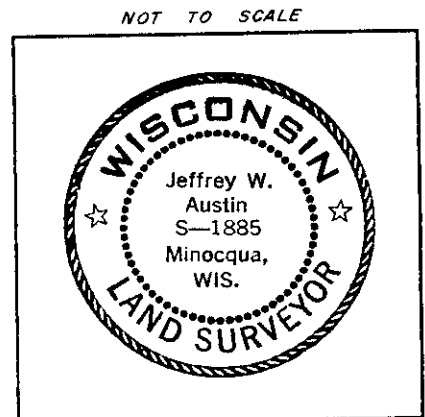


(c)(d)(e) Plan view of corner with ties to at least 4 witness monuments. If in disagreement with previously established corner, show the distances between the two corners and also indicate the ties to the disputed.



(i) I, Jeffrey W. Austin, Registered Land Surveyor hereby certify that the corner location on this record was determined by me or under my direction and control and that this U.S. Public Land Survey Monument Record is correct and complete to the best of my knowledge and belief.

Signature *Jeffrey W. Austin* Date JUNE 10, 1991



INDEX NO. R-15

3906220020

1943: Notes by E.F. Kowalke indicate this corner location is marked by an iron pipe, witnessed by a W.Pine 6" N65°E, 91.

April, 1961: Map by William S. Cameron, Registered Land Surveyor indicates corner location is marked by an axle shaft, witnessed by a 12" Oak S45°W, 96.8'.

June 1, 1991: I found and accepted an axle shaft, 50" long, 1-3/4" diam. I replaced this monument with an aluminum post, 30" long, 2-1/2" diam. with 3-1/4" diam. Oneida County aluminum cap marked as shown on the reverse side of this record. I found the following witnesses: decayed Pine stump N56°E, 95.0 feet (Kowalke); Oak snag 12" S45°W, 96.8 feet (Cameron). I established the following witnesses: set nail in W.Pine 12" N59°E, 42.87 feet; set nail in W.Spruce 5" S2°W, 28.70 feet (bark scribed); set nail in Oak 5" S46°W, 57.25 feet; set nail in W.Pine 5" S72°W, 62.30 feet; set plastic sign post Northeast, 1 foot.