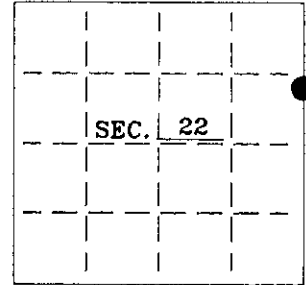


U. S. PUBLIC LAND SURVEY MONUMENT RECORD

Note: This form is intended and designed to fulfill all requirements of Wisconsin Administrative Code-Chapter A-E 7.08 U. S. Public Land Survey Monument Record (3)(a)(b)(c)(d)(e)(f)(g)(h)(i). An additional sheet may be added if necessary to conform with said requirements.

(a) CORNER LOCATION: State Plane Coordinates
 Meander corner of Sec. 22 X _____
 Township 39 North Y _____
 Range 6 East Datum Base _____
 Town/City Minocqua County of Oneida



(b) HISTORY OF ORIGINAL CORNER ESTABLISHMENT:
 Original Surveyor: Alexander Anderson
 Date of Survey: Commenced October 1863
 Completed October 1863

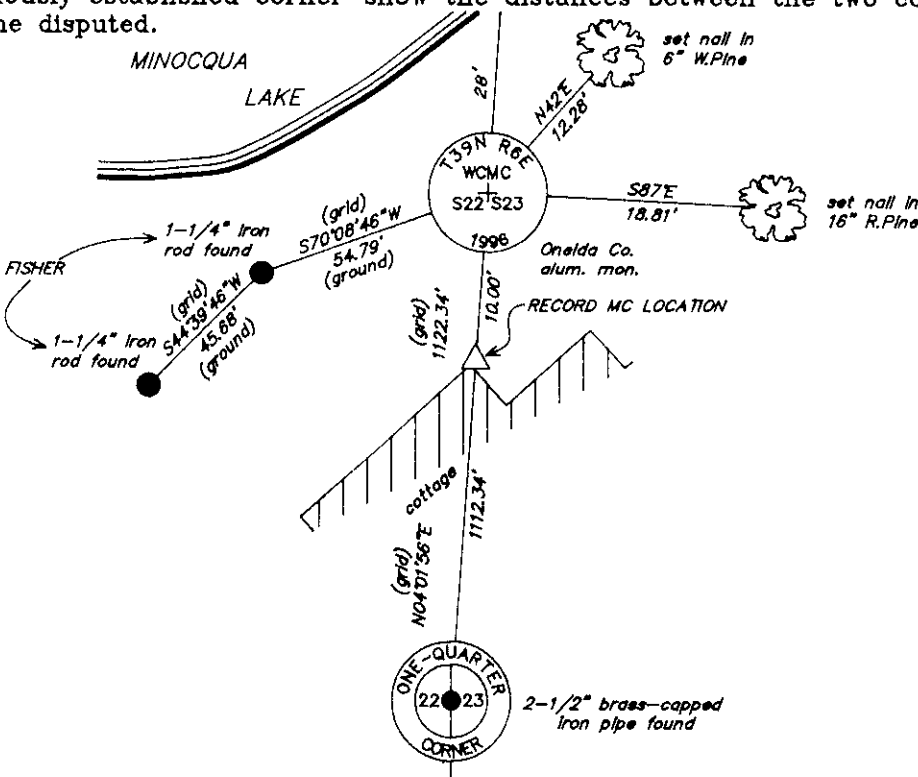
Original B.T.'S
 Blk. Oak 10" S32W 32 lks.
 Y.Pine 6" S10E 30 lks.

(b)(f)(g)(h) Description of monument found at this corner and if it was accepted—state all evidence (material—testimonial—occupation—plats—records—other monuments) used as a basis for accepting. If not accepted or if nothing was found state evidence used as basis for establishing location. If reestablished through lost corner proportionate methods indicate all monuments—distances and directions used to establish. Indicate type of monument and sign post found or set.

June, 1981: Rainbow Bay Condominium Plat by John Fisher indicates corner is marked by an iron pipe and witnessed by an 8" W.Birch S75°W, 23.9' and a 9" R.Oak N47°E, 2.9'.

May 21, 1996: It appears Fisher's pipe was removed during the construction of a nearby cottage. I was able to reestablish a witness corner location using two monuments from Fisher's survey as shown below. I set an Oneida County aluminum monument as the witness corner but did not set a plastic sign post due to the close proximity of the cottage.

(c)(d)(e) Plan view of corner with ties to at least 4 witness monuments. If in disagreement with previously established corner—show the distances between the two corners and also indicate the ties to the disputed.

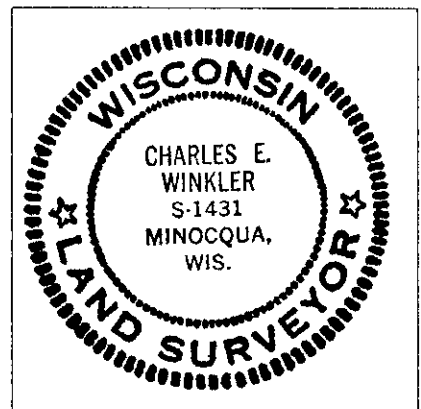


REGISTER OF DEEDS OFFICE
 ONEIDA COUNTY, WIS.
FILED
 SEP - 4 1996
 At _____ O'Clock _____ M
 THOMAS H. LEIGHTON
 REGISTER OF DEEDS

Not to Scale
 WI Coordinate System
 (North Zone)

(i) I Charles E. Winkler, Registered Land Surveyor
 hereby certify that the corner location on this record was determined by me or under my direction and control and that this U.S. Public Land Survey Monument Record is correct and complete to the best of my knowledge and belief.

Charles E. Winkler 8/19/1996
 Signature Date



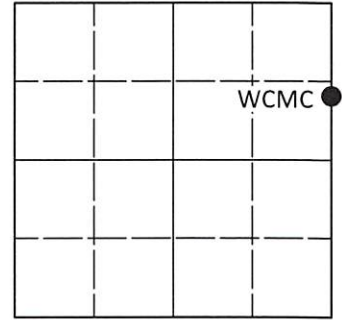
INDEX NO. O.P.-17

U.S. PUBLIC LAND SURVEY MONUMENT RECORD

Note: This form is intended and designed to fulfill all requirements of Wisconsin Administrative Code, Chapter A-E 7.08 U.S. Public Land Survey Monument Record (3)(a-i).

(a) CORNER LOCATION
 Wit. Meander Cor. of Secs. 22 & 23
 Township 39 North
 Range 6 East of the 4th P.M.
 Town of Minocqua
 County of Oneida

WISCRS - Oneida County
 N: 244,459.00 USft
 E: 186,290.52 USft
 Datum: NAD 83(2011) ep. 2010.00
 GNSS Method: RTN - Offset
 GNSS Control: WISCORS VRS



Sec. 22, T. 39 N., R. 6 E.

(b)(f)(g)(h) Description of monument found at this corner and if it was accepted, state all evidence (material, testimonial, occupational, plats, records, other monuments) used as a basis for accepting. If not accepted or if nothing was found, state evidence used as basis for establishing location. If re-established through lost corner proportionate methods, indicate all monuments, distances and directions used to establish. Indicate type of monument and sign post found or set.

This record is a perpetuation of the following land corner document(s):

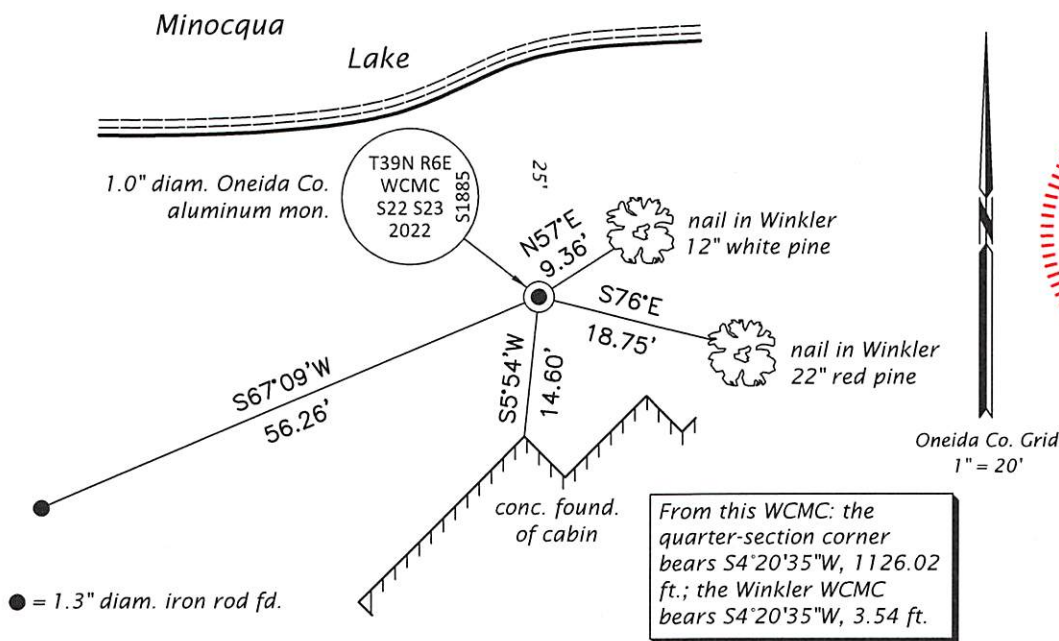
August 19, 1996: USPLS Monument Record by Charles E. Winkler, filed in Oneida County

A complete history of the corner can be found on the previous land corner document(s). I accept the record activity as a true and faithful perpetuation or reestablishment of the original corner location and further perpetuate it as described below.

July 7, 2022: I found the record county monument leaning heavily Northwest, grown into the root of an 8" white pine. As the record bearing tree nails are overgrown, I traversed to several control points from Wilderness Surveying Inc. job #15-138 to properly reposition the Winkler WCMC location. As described below, I extended the section line North to establish a new WCMC in a secure location. At the corner point, I set a 1.0" diam., 30" long aluminum pipe with a 2.5" diam. Oneida Co. aluminum cap flush with the ground surface. I drove the Winkler monument out of sight under the white pine. I found or established accessories as indicated below. I did not set a sign post.

The coordinate value shown has been determined by traversing from two or more GNSS offset points satisfying the accuracy requirements defined and qualified in the 2022 Oneida County Fee Schedule for USPLS Corners.

(c)(d)(e) Plan view of corner with ties to at least 4 witness monuments. If in disagreement with previously established corner, show the distances between the two corners and also indicate the ties to the disputed.



REGISTER OF DEEDS OFFICE
 ONEIDA COUNTY
 FILED

AUG 31 2022

KYLE J. FRANSON
 REGISTER OF DEEDS

(i) I, Jeffrey W. Austin, Professional Land Surveyor No. S-1885, hereby certify that the corner location on this record was determined by me or under my direction and control and that this U.S. Public Land Survey Monument Record is correct and complete to the best of my knowledge and belief.

[Handwritten Signature]
 Signature

AUG. 1, 2022
 Date