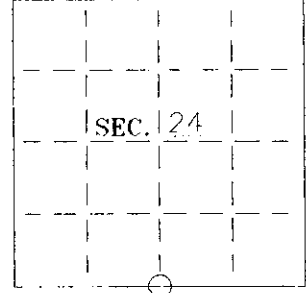


U. S. PUBLIC LAND SURVEY MONUMENT RECORD

Note: This form is intended and designed to fulfill all requirements of Wisconsin Administrative Code-Chapter A-E 7.08 U. S. Public Land Survey Monument Record (3)(a)(b)(c)(d)(e)(f)(g)(h)(i). An additional sheet may be added if necessary to conform with said requirements.

(a) CORNER LOCATION: State Plane Coordinates
S 1/4 corner of Sec. 24 X _____
 Township _____ 39 North Y _____
 Range _____ 06 East Datum Base _____
 Town/City _____ Minocqua County of _____ Oneida



(b) HISTORY OF ORIGINAL CORNER ESTABLISHMENT:
 Original Surveyor: Alexander Anderson
 Date of Survey: Commenced October 15, 1863
 Completed October 23, 1863

Original B.T.'S
 Sugar 10" N33°E 8 lks
 Sugar 8" S281/2°E 10 lks

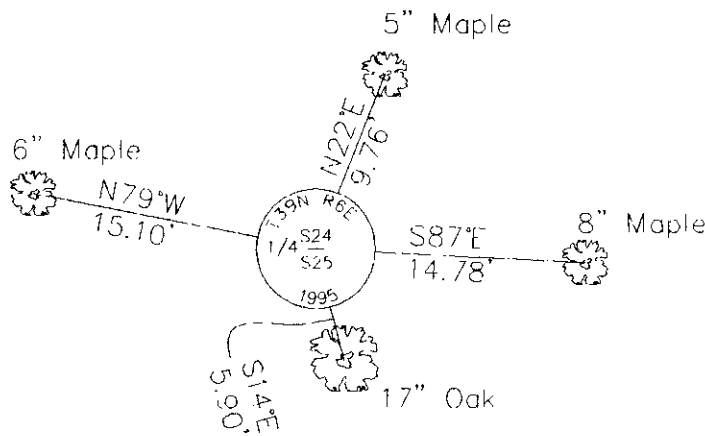
(b)(f)(g)(h) Description of monument found at this corner and if it was accepted—state all evidence (material—testimonial—occupation—plats—records—other monuments) used as a basis for accepting. If not accepted or if nothing was found state evidence used as basis for establishing location. If reestablished through lost corner proportionate methods indicate all monuments—distances and directions used to establish. Indicate type of monument and sign post found or set.

July 8, 1968--Doolittle-Barden's Wah-Co-Zi-Zi Plat by James Griffin--referenced "axel" shaft found in place and the following B.T.'s: 6" Maple N54°E 9.7' and 4" Oak N37°W 18.4'.

October 18, 1995--found 1" axle shaft and old wooden RT, scribed "1/4". The distance of 151.94' shown on the Griffin Plat between the 1/4 corner and the Davies Road ROW pipe matches the distance measured in the field. No evidence found of Griffin B.T.'s. Also found a 1" axle shaft 115' west.

Accepted the location of the 1" dia axle shaft and repaced it with a 2-1/2" dia by 30" long aluminum-capped Oneida County monument. Set plastic signpost 1-1/2' northeast.

(c)(d)(e) Plan view of corner with ties to at least 4 witness monuments. If in disagreement with previously established corner-show the distances between the two corners and also indicate the ties to the disputed.

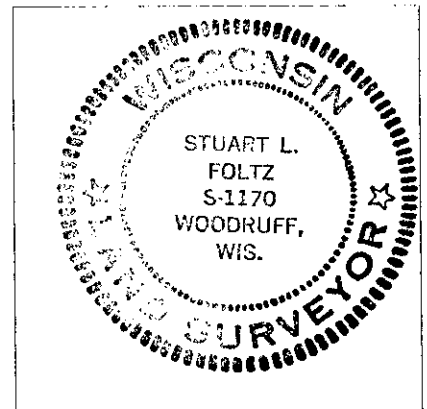


Set 16d galvanized nails in side of bearing trees.

Placed survey marker plaque on front of bearing trees.

(i) I Stuart L. Foltz hereby certify that the corner location on this record was determined by me or under my direction and control and that this U.S. Public Land Survey Monument Record is correct and complete to the best of my knowledge and belief.

Stuart L. Foltz Signature Date 12-20-95



INDEX NO. R-23

3906240020