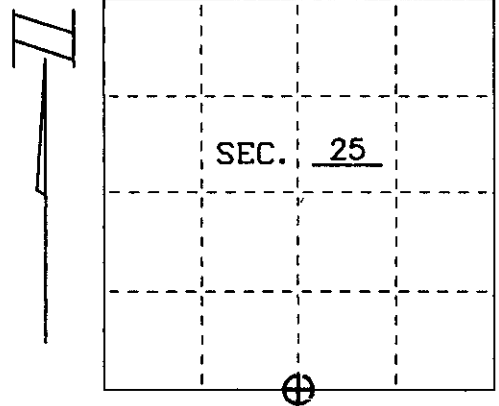


U. S. P U B L I C L A N D S U R V E Y M O N U M E N T R E C O R D

Note: This form is intended and designed to fulfill all requirements of Wisconsin Administrative Code, Chapter A-E 7.08 U.S. Public Land Survey Monument Record (3)(a)(b)(c)(d)(e)(f)(g)(h)(i). An additional sheet may be added if necessary to conform with said requirements.

(a) CORNER LOCATION Township 39 North
Range 6 East

Town of Minocqua
County of Oneida, State of Wisconsin



(b)(f)(g)(h) Description of monument found at this corner and if it was accepted, state all evidence (material, testimonial, occupational, plats, records, other monuments) used as a basis for accepting. If not accepted or if nothing was found, state evidence used as basis for establishing location. If reestablished through lost corner proportionate methods, indicate all monuments, distances and directions used to establish. Indicate type of monument and sign post found or set.

Oct. 15-23, 1863 Alexander Anderson, Deputy Surveyor

Original Bearing Trees:
Maple 9" N 79 1/2°W 20lks
Maple 7" S 1°W 16lks

April, 1974

John Fisher, Northwoods Surveyors, Inc. set iron rod from the bearing trees shown on E.F. Kowalke's Survey Map and established two new bearing trees.
BT's: 18" W. Pine N 89°W, 72.0' (EFK)
24" W. Pine S 37°W, 76.5' (EFK)
16" N. Pine S 60°W, 22.6' (JHF)
8" W. Pine S 05°E, 11.2' (JHF)

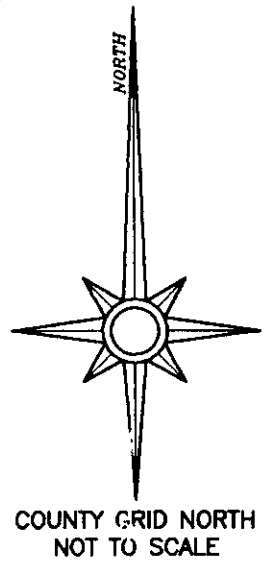
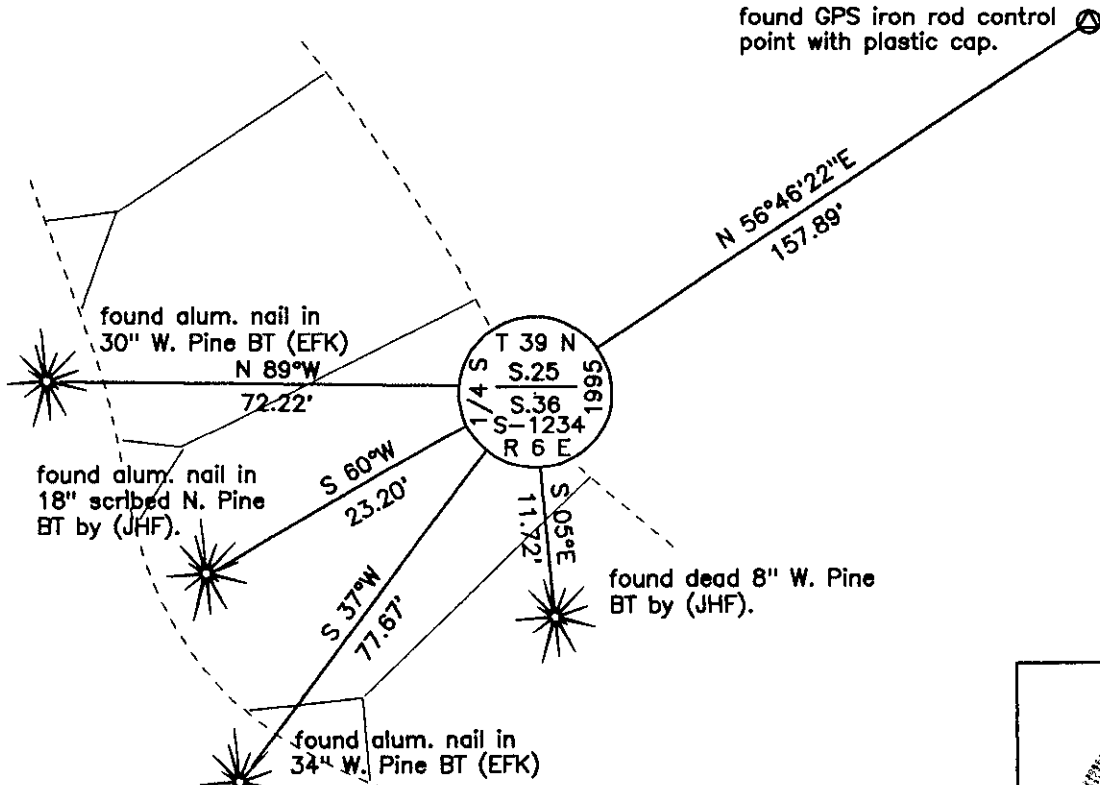
1995

James D. Rein replaces iron rod with 2-1/2" diameter Oneida County aluminum capped monument.

Nov. 20, 1996

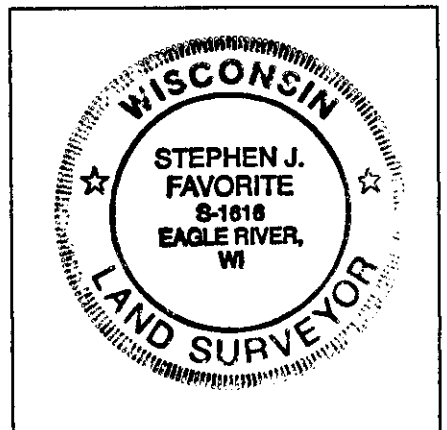
I found Kowalke's and Fisher's bearing trees shown below as (EFK and JHF).
I found carsonite witness post West, 1 foot and Oneida County alum. capped monument.

(c)(d)(e) Plan view of corner with ties to at least 4 witness monuments. If in disagreement with previously established corner, show the distances between the two corners and also indicate the ties to the disputed.



(i) I, Stephen J. Favorite, hereby certify that the corner location on this record was determined by me or under my direction and control and that this U.S. Public Land Survey Monument Record is correct and complete to the best of my knowledge and belief.

Stephen J. Favorite 12/9/96
Stephen J. Favorite Date
R.L.S. #S-1616



INDEX NO. V-23

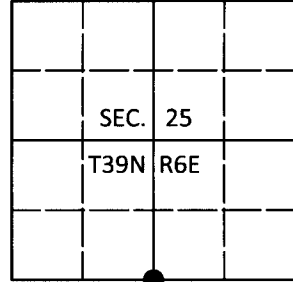
3906250020

U.S. PUBLIC LAND SURVEY MONUMENT RECORD

Note: This form is intended and designed to fulfill all requirements of Wisconsin Administrative Code, Chapter A-E 7.08 U.S. Public Land Survey Monument Record (3){a-l}.

(a) CORNER LOCATION
1/4 Cor. of Secs. 25 & 36
Township 39 North
Range 6 East of the 4th P.M.
Town of Minocqua
County of Oneida

WISCRS - Oneida County
N: 235,690.60 USft
E: 193,984.63 USft
Datum: NAD 83(2011)
GNSS Method: Static Offset
GNSS Control: WISCORS VRS



(b) HISTORY OF ORIGINAL CORNER ESTABLISHMENT

Original Surveyor: Original Accessories:

Date of Survey Commenced:
Completed:

(b)(f)(g)(h) Description of monument found at this corner and if it was accepted, state all evidence (material, testimonial, occupational, plats, records, other monuments) used as a basis for accepting. If not accepted or if nothing was found, state evidence used as basis for establishing location. If re-established through lost corner proportionate methods, indicate all monuments, distances and directions used to establish. Indicate type of monument and sign post found or set.

This is a perpetuation of a previous USPLS Monument Record by Stephen J. Favorite, RLS dated December 9, 1996 and filed in the office of the Oneida County Register of Deeds. A complete history of the corner can be found on the previous monument record. I accept the previous location as a true and faithful perpetuation or reestablishment of the original corner location and further perpetuate it as follows.

January 30, 2017: Jeff Austin visited the corner and recovered the record monument, a 2-1/2" diam. aluminum pipe with a 3-1/4" diam. Oneida Co. aluminum cap flush with the ground surface. The record accessories were found in substantial agreement with the previous record and were not remeasured as the sole purpose of this work is to report the coordinates of the corner point.

The coordinate value shown has been verified by at least one of the following methods: 1) comparison to a previously GPS determined published value; 2) the value is the average of two or more GPS observations at a markedly different time; 3) one or more distances were measured back to the GPS observed corner from temporary GPS observed offset locations.

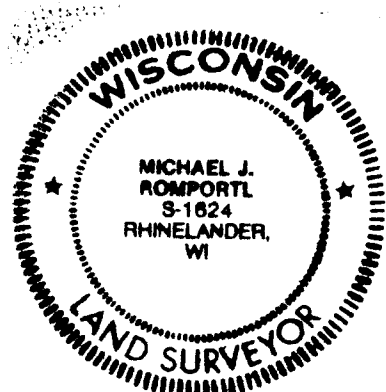
(c)(d)(e) Plan view of corner with ties to at least 4 witness monuments. If in disagreement with previously established corner, show the distances between the two corners and also indicate the ties to the disputed.

REGISTER OF DEEDS OFFICE
ONEIDA COUNTY
FILED

JUL 11 2017

AT O'CLOCK M
KYLE J. FRANSON
REGISTER OF DEEDS

(i) I, Michael J. Romportl, Professional Land Surveyor No. S-1624, hereby certify that the corner location on this record was determined by me or under my direction and control and that this U.S. Public Land Survey Monument Record is correct and complete to the best of my knowledge and belief.



Michael J Romportl 7/11/2017
Signature Date