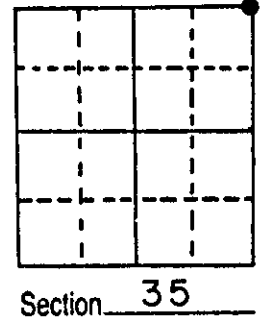
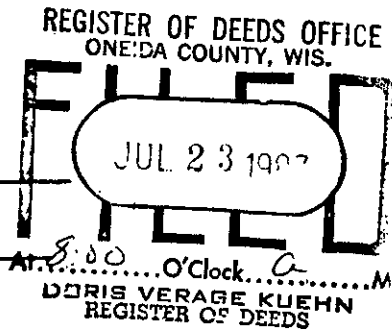


U.S. PUBLIC LAND SURVEY MONUMENT RECORD

Note: This form is intended and designed to fulfill all requirements of Wisconsin Administrative Code, Chapter A-E 5.02, U.S. Public Land Survey Monument Record (3) (a) (b) (c) (d) (e) (f) (g) (h) (i). An additional sheet may be added if necessary to conform with said requirements.

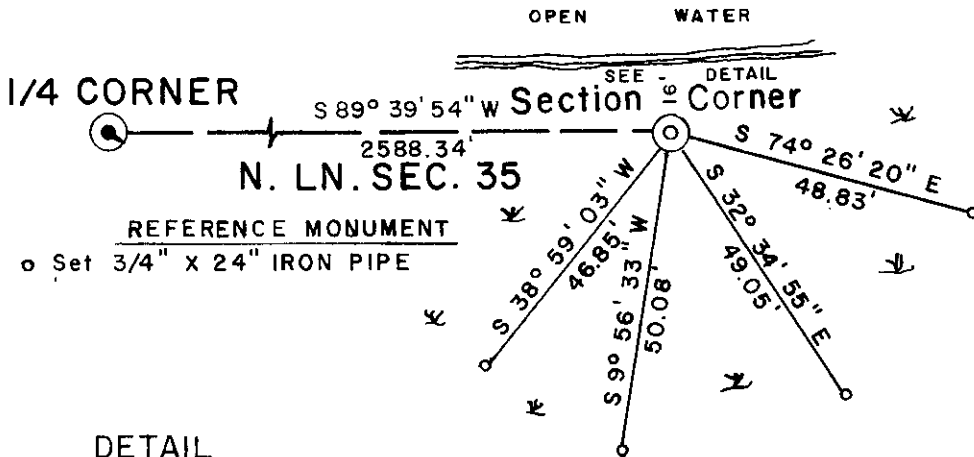
(a) Corner location: Township 39 North
 Range 6 East/West
 Town/City/Village MINOCQUA
 County ONEIDA



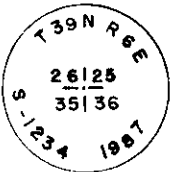
(b) (f) (g) (h) Description of monument found at this corner and if it was accepted, state all evidence (material, testimonial, occupational, plats, records, other monuments) used as a basis for accepting. If not accepted or if nothing was found, state evidence used as basis for establishing location. If reestablished through lost corner proportionate methods, indicate all monuments, distances and directions used to establish.

- October 1863 - Alexander Anderson, Deputy Surveyor - Set post for corner to Sections 25, 26, 35 and 36. Original Bearing trees: Tamarack S88°E, 62 lks; Tamarack 7°N44½°W, 19 lks.
- January 1951 - E. F. Kowalke, Surveyor - Map POTTAWATOMIE FOREST and adjoining lands - identifies corner monumented by post and iron pipe.
- June 26th, 1987 - James D. Rein, RLS - Replaced found iron pipe and old scribed post with a capped 2" dia. x 6 feet long cone piston aluminum monument, and reference monuments as shown below. Set plastic witness marker adjacent to corner monument.

(c) (d) (e) Plan view of corner with ties to at least 4 witness monuments. If in disagreement with previously established corner, show the distances between the two corners and also indicate the ties to the disputed corner.



DETAIL



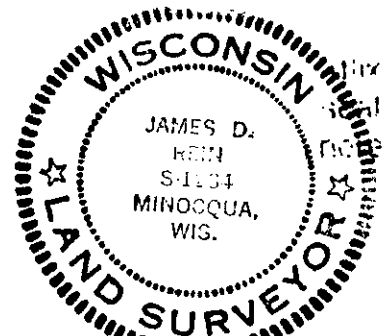
Set 2" Dia. X 6' Long ALUMINUM MONUMENT Replaced 3 1/2" IRON PIPE (left lay by monument)

Scale 1" = 50'

ASSUMED BEARING REF. TO NORTH LN. SEC. 35

(i) I, James D. Rein, Registered Land Surveyor No. S-1234 (type or print name) certify that the corner location on this record was determined by me or under my direction and control and that this U.S. Public Land Survey Monument Record is correct and complete to the best of my knowledge and belief.

James D. Rein Signature June 29th, 1987 Date



Index No. V-21