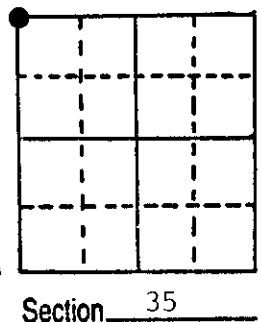
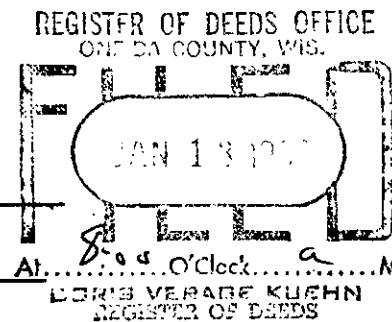


U.S. PUBLIC LAND SURVEY MONUMENT RECORD

Note: This form is intended and designed to fulfill all requirements of Wisconsin Administrative Code, Chapter A-E 5.02, U.S. Public Land Survey Monument Record (3) (a) (b) (c) (d) (e) (f) (g) (h) (i). An additional sheet may be added if necessary to conform with said requirements.

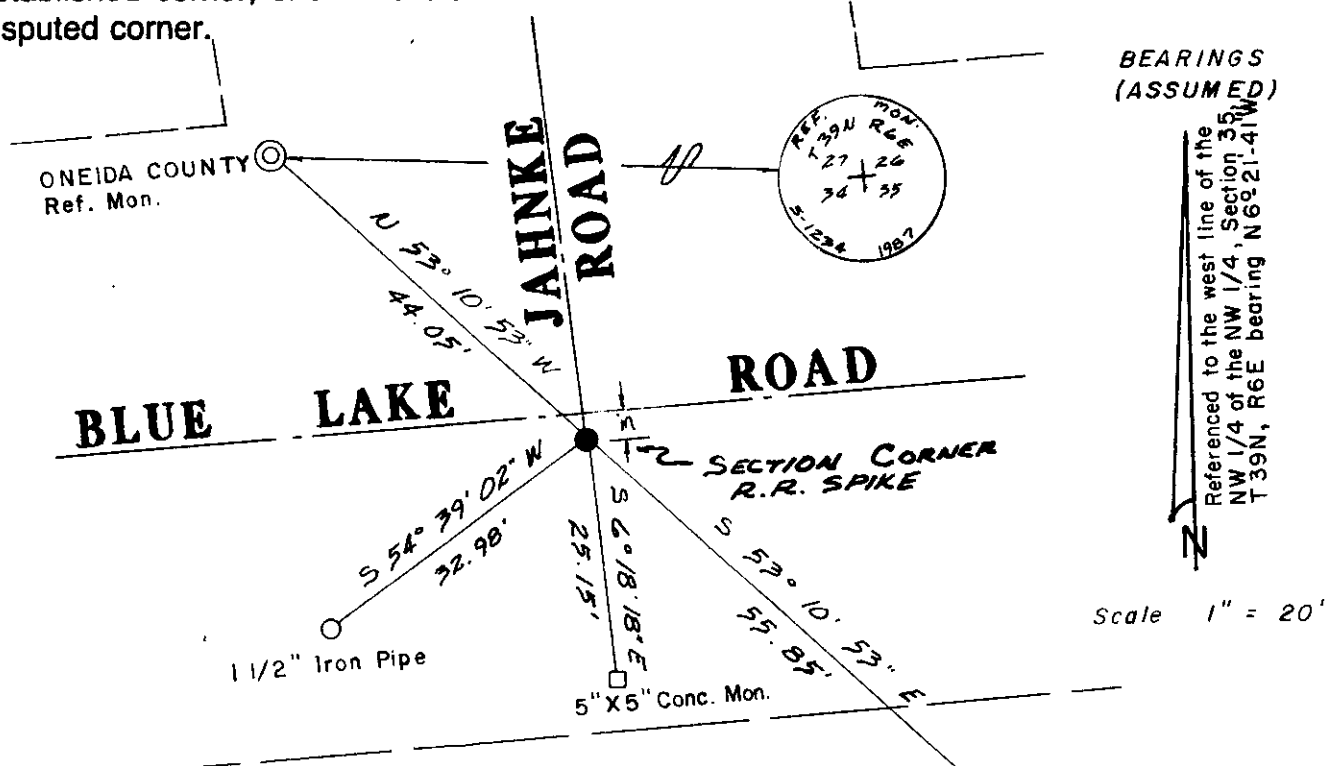
(a) Corner location: Township 39 North
 Range 6 East ~~West~~
 Town/City/Village Minocqua
 County Oneida



(b) (f) (g) (h) Description of monument found at this corner and if it was accepted, state all evidence (material, testimonial, occupational, plats, records, other monuments) used as a basis for accepting. If not accepted or if nothing was found, state evidence used as basis for establishing location. If reestablished through lost corner proportionate methods, indicate all monuments, distances and directions used to establish.

October 1863 - Alexander Anderson, Deputy Surveyor - Set post for Corner 26, 27, 34, and 35. Original B.T.'s: Aspen 8" N10°W, 25 links; Aspen 8" N82°E, 15 links.
 November 1949 - Walter Henning, Surveyor - Field Book #7, Page 72, identifies corner monument as iron grate, referenced by concrete monument 25 feet south.
 Feb. 24, 1982 - John H. Fisher, RLS - Found iron shaft and set rail road spike over shaft, 3 feet south of centerline of Blue Lake Road, referenced by P.K. nail in Power pole N41°W, 31.4 feet; 1½" dia. iron pipe S57°W, 33.0 feet; Concrete monument South, 33.0 feet.
 November 1987 - James D. Rein, RLS - Recovered rail road spike below new layer of asphalt pavement. Reference monuments found: 1½" dia. iron pipe S54°-39'-02"W, 32.98 feet; Concrete monument, S6°-18'-18"E, 25.15 feet. Set capped 2" dia. aluminum break away reference monuments as shown in detail drawing.

(c) (d) (e) Plan view of corner with ties to at least 4 witness monuments. If in disagreement with previously established corner, show the distances between the two corners and also indicate the ties to the disputed corner.



(i) I, James D. Rein, Registered Land Surveyor No. S-1234
 (type or print name) certify that the corner location on this record was determined by me or under my direction and control and that this U.S. Public Land Survey Monument Record is correct and complete to the best of my knowledge and belief.

ONEIDA COUNTY Ref. Mon. & Plastic Post
 Date
 File

James D. Rein Signature
 November 23rd, 1987 Date

3906270000

Index No. V-17

