

CERTIFIED LAND CORNER RESTORATION

State of Wisconsin }
County of Oneida } ss.

I Terry T. Golding, do hereby certify that on the 4th day of May, 19 85, I found evidence of the south one-quarter corner of Section 27 Township 39 North Range 6 East, Fourth Principal Meridian, as described hereon; and that from this evidence I established a new monument and accessories as described hereon to perpetuate the original location of this corner:

Description of original monument and accessories and subsequent restorations:

Original corner was set during the subdivision of T39N, R6E, which commenced Oct. 15, 1863 and finished Oct. 23, 1863 by Alexander Anderson

Original B.T.s : 7" Birch, North 39 lks
7" Aspen, S42 W, 23 lks
Inman Engineering of Woodruff called for a 1" dia. iron pipe with the following B.T.s : 24"W. Pine, N11 E, 11.5'
20"W. Pine, N67 W, 57.5'

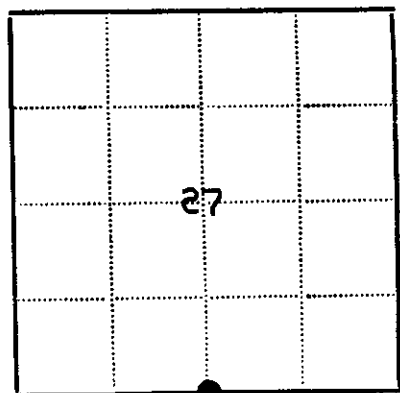
Description of corner evidence found:

Found a 1 1/4" dia. iron pipe in the blacktop of Hixon Road.
Found no evidence of the original B.T.s.

Description of monument and accessories I established to perpetuate the location of this corner:

Left the 1 1/4" dia. iron pipe to mark the corner and made the following references :

Set an iron spike in : 23" W. Pine, N60 W, 57.55'
15" W. Pine, S20 E, 60.05'
20" N. Pine, S25 W, 72.50'
Power pole , N45 E, 37.22'



● - Corner monument restored
□ -

Resident witnesses.....

Dated at Arbor Vitae Wisconsin, this 28th day of June 19 85.

Signature Terry T. Golding Title Reg. Land Surveyor
(County Surveyor, Registered Land Surveyor, or other duly authorized official)

Surveyors Registration No. S-1468

Office of..... County of.....

I hereby certify that the within instrument was filed in this office for record on the..... day of..... 19....., and was filed in Book No..... Page No..... of County Records.

Signature..... Title.....

Township....., Range....., Section....., Index No....., Page No.....

3906270020

1-15

U.S. PUBLIC LAND SURVEY MONUMENT RECORD

REGISTER OF DEEDS OFFICE
ONEIDA COUNTY
FILED

Note: This form is intended and designed to fulfill all requirements of the Wisconsin Administrative Code, Chapter A-E 7.08 U.S. Public Land Monument Record (3)(a)(b)(c)(d)(e)(f)(g)(h)(i). An additional sheet may be added if necessary to conform with said requirements.

SEP 19 2018

KYLE J. FRANSON
REGISTER OF DEEDS

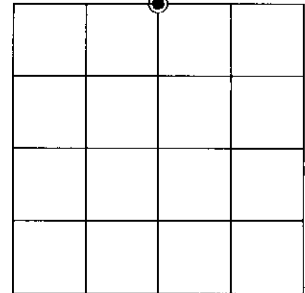
(a) CORNER LOCATION:

North Quarter Corner of Section 34
Township 39 North
Range 6 East
Town of Minocqua
County of Oneida

North:
East:
Datum:
GNSS Method:
GNSS Control:

(RECORDING AREA)

SECTION 34



(b) HISTORY OF ORIGINAL CORNER ESTABLISHMENT

Original Surveyor:
Date of Survey: Commenced
Completed
Original B.T.'S

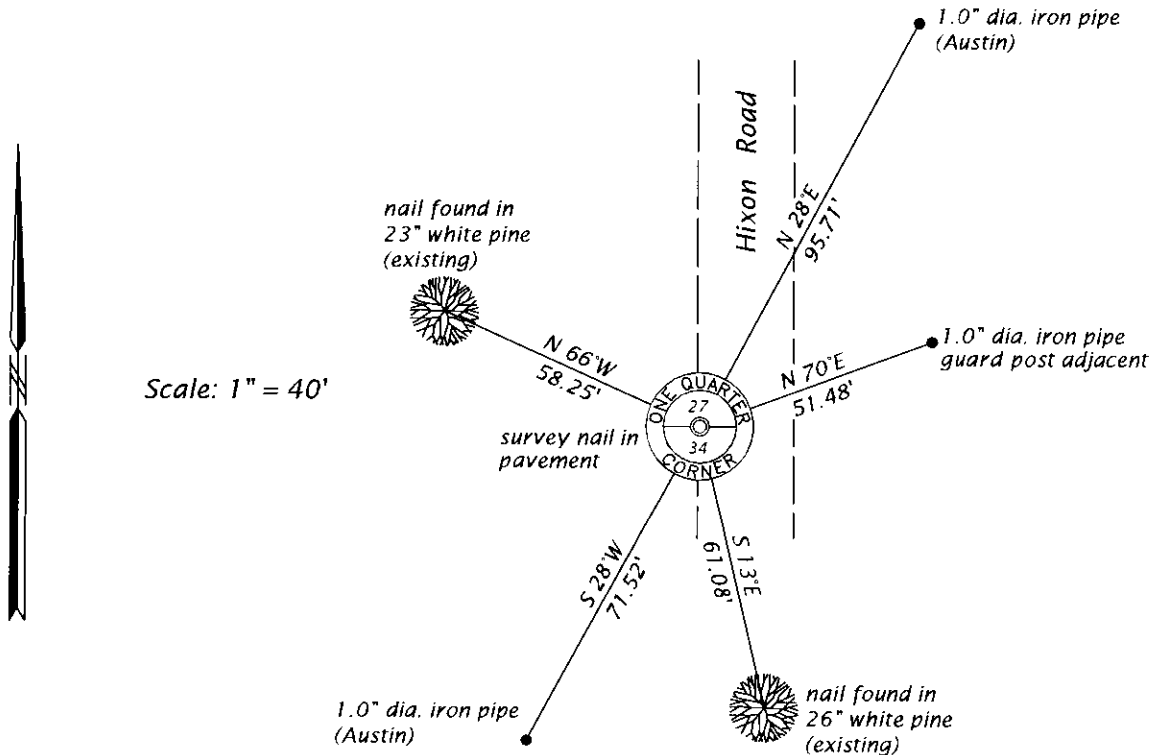
*SEE PREVIOUS U.S.P.L.S. MONUMENT RECORD
DATED JUNE 28, 1985 & PREVIOUS LAND
CORNER PRESERVATION RECORD
DATED JUNE 2, 2009.*

(f)(g)(h) DESCRIPTION OF MONUMENT FOUND AT THIS CORNER AND IF IT WAS ACCEPTED, STATE ALL EVIDENCE (MATERIAL, TESTIMONIAL, OCCUPATIONAL, PLATS, RECORD, OTHER MONUMENTS) USED AS A BASIS FOR ESTABLISHING LOCATION. IF NOT ACCEPTED OR IF NOTHING WAS FOUND, STATE EVIDENCE USED AS BASIS FOR ESTABLISHING LOCATION. IF REESTABLISHED THROUGH LOST CORNER PROPORTIONATE METHODS, INDICATE ALL MONUMENTS, DISTANCES AND DIRECTIONS USED TO ESTABLISH. INDICATE TYPE OF MONUMENT AND SIGN POST FOUND OR SET.

This is a perpetuation of a previous U.S.P.L.S. Monument Record by Terry T. Golding, RLS, dated June 28, 1985, and filed in the office of the Oneida County Register of Deeds, and shown on the previous Land Corner Preservation Record by Jeffrey W. Austin, PLS, dated June 2, 2009, and filed in the Oneida County Land Information Office as Map No. L2616. A complete history of the corner can be found on the previous monument record. I accept the previous location as a true and faithful perpetuation or reestablishment of the original corner location and further perpetuate it as follows.

September 7, 2018, I, James D. Rein, PLS No. S-1234, found and accepted the survey nail we set on August 21, 2015, based on witnesses recovered and shown on the previous Land Corner Preservation Record by Austin in 2009 - see map #B7822 filed in the Oneida County Land Information Office. See below for updated witnesses.

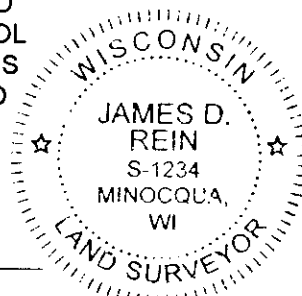
(c)(d)(e) PLAN VIEW OF CORNER WITH TIES TO AT LEAST 4 WITNESS MONUMENTS. IF IN DISAGREEMENT WITH PREVIOUSLY ESTABLISHED CORNER, SHOW THE DISTANCE BETWEEN THE TWO CORNERS AND ALSO INDICATE THE TIES TO THE DISPUTED CORNER.



(i) I, JAMES D. REIN, PROFESSIONAL LAND SURVEYOR NO. S-1234 HEREBY CERTIFY THAT THE CORNER LOCATION ON THIS RECORD WAS DETERMINED BY ME OR UNDER MY DIRECTION AND CONTROL AND THAT THIS U.S. PUBLIC LAND SURVEY MONUMENT RECORD IS CORRECT AND COMPLETE TO THE BEST OF MY KNOWLEDGE AND BELIEF.

[Handwritten Signature]
SIGNATURE

9-17-18
DATE



INDEX NO. V-15
3906270020