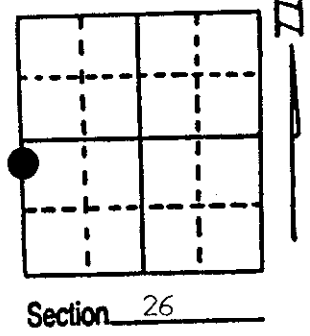


U.S. PUBLIC LAND SURVEY MONUMENT RECORD

Note: This form is intended and designed to fulfill all requirements of Wisconsin Administrative Code, Chapter A-E 7.08 U.S. Public Land Survey Monument Record (3) (a) (b) (c) (d) (e) (f) (g) (h) (i). An additional sheet may be added if necessary to conform with said requirements.

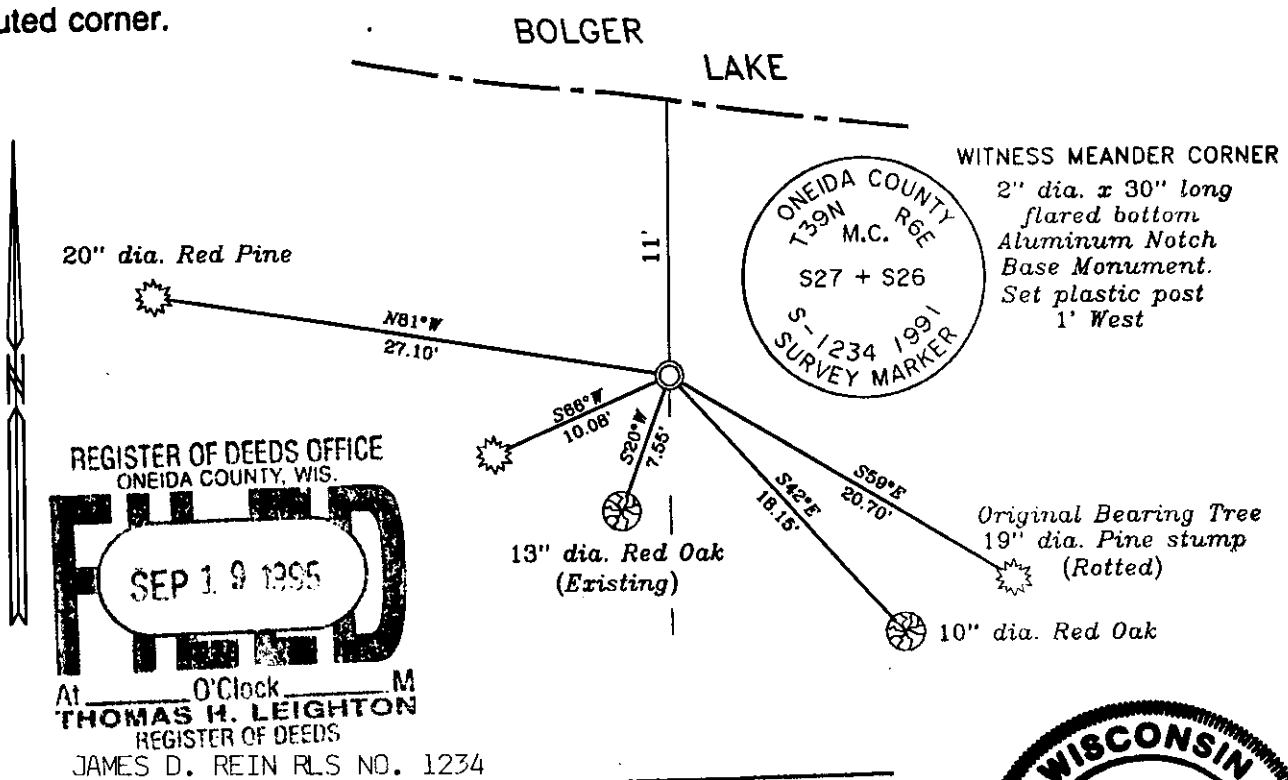
(a) Corner location: Township 39 North
 Range 6 East/West
 Town/City/Village MINOCQUA
 County ONEIDA



(b) (f) (g) (h) Description of monument found at this corner and if it was accepted, state all evidence (material, testimonial, occupational, plats, records, other monuments) used as a basis for accepting. If not accepted or if nothing was found, state evidence used as basis for establishing location. If reestablished through lost corner proportionate methods, indicate all monuments, distances and directions used to establish. Indicate type of monument found or set and sign post.

- Oct. 15th, 1863 - Alexander Anderson, Deputy Surveyor, set Meander Corner witnessed by two bearing trees: a 20" Y. Pine bearing S40°E, 46 links; and a 16" Y. Pine bearing S68°W, 9 links.
- May 8th, 1953 - E. F. Kowalke, Land Surveyor, set a Witness Meander Corner to the Original Meander Corner which falls in Bolger Lake. Original bearing tree, Pine stump, bears S56°E, 20' from new post and iron pipe. Made new bearing tree, 7" Oak, S22°W, 7.3'.
- May 8th, 1991 - James D. Rein, Registered Land Surveyor No. 1234, recovered a 1 3/4" dia. iron pipe referenced by a 13" dia. Red Oak bearing S20°W, 7.55' and an original bearing tree 19" dia. Pine stump (rotted) bearing S59°E, 20.70'. Replaced iron pipe with a capped 2" dia. x 30" long flared bottom Aluminum Notch Base Monument. Made new reference ties as shown in plan view. Set plastic post 1 foot west of corner monument.

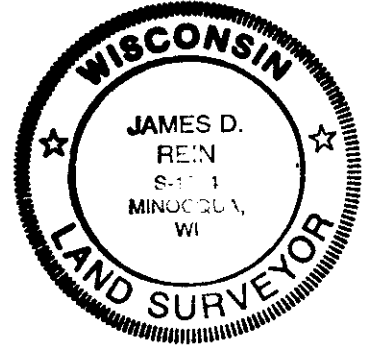
(c) (d) (e) Plan view of corner with ties to at least 4 witness monuments. If in disagreement with previously established corner, show the distances between the two corners and also indicate the ties to the disputed corner.



REGISTER OF DEEDS OFFICE
 ONEIDA COUNTY, WIS.
FILED
 SEP 19 1995
 At 12 O'Clock PM
 THOMAS H. LEIGHTON
 REGISTER OF DEEDS
 JAMES D. REIN RLS NO. 1234

(i) I, _____
 (type or print name) certify that the corner location on this record was determined by me or under my direction and control and that this U.S. Public Land Survey Monument Record is correct and complete to the best of my knowledge and belief.

James D. Rein
 Signature _____ Date 6-28-95



3906271700

Index No. T-U 17